

**Danver**<sup>™</sup>

**BROWN JORDAN**<sup>®</sup>  
**OUTDOOR KITCHENS**

**Trex**<sup>®</sup>  
Outdoor Kitchens





ABOUT US	4	STYLES & FINISHES	9	CABINETRY GUIDE	29	PARTNERSHIPS	67
WHO WE ARE	4	<b>DOOR STYLES</b>	<b>10</b>	CABINET DIMENSIONS	30	DEALERS	69
UNRIVALED CRAFTSMANSHIP	6	CLASSIC DOOR STYLES	12	CABINET FEATURES	31	TRADES & PROFESSIONALS	71
		KEY WEST SEA GLASS	14	STORAGE CABINETS	34	MULTI-FAMILY	75
		<b>POWDER COAT FINISHES</b>	<b>16</b>	FULL HEIGHT DOOR CABINETS	35	POST & PANEL SYSTEM	77
		ESSENTIALS	17	DRAWER/DOOR CABINETS	36	HOSPITALITY	79
		CLASSICS	18	MULTI-DRAWER CABINETS	37		
		BROWN JORDAN EXCLUSIVES	19	SINK CABINETS	38	<b>EXCLUSIVE COLLECTIONS</b>	<b>81</b>
		WOOD GRAINS	20	TRASH PULL-OUT CABINETS	39		
		<b>CABINET PULLS &amp; HANDLES</b>	<b>22</b>	CORNER CABINETS	40	OUTDOOR LIVING	85
		STANDARD BAR PULL	23	TALL CABINETS	41	ELEMENTS	93
		ASHLEY NORTON FINISHES	24	APPLIANCE CABINETS	44	URBANE	97
		ASHLEY NORTON KNOBS & PULLS	25	POWER BURNER CABINETS	45	COSMOPOLITAN COLLECTION	101
				CERAMIC EGG SMOKER CABINETS	46	CUBE	109
				BARTENDER STATION CABINETS	47	TECNO	113
				WARMING DRAWER CABINETS	48	TREX READY	117
				GRILL CABINETS	52		
				DOOR GRILL CABINETS	53		
				DRAWER/DOOR GRILL CABINETS	54		
				DRAWER GRILL CABINETS	55		
				WALL CABINETS	58		
				WALL STORAGE CABINETS	59		
				WALL MICROWAVE CABINETS	60		
				KITCHEN ACCESSORIES	62		
				DRAWER INSERTS	63		



## WHO WE ARE

Danver is the pursuit of perfection. We fuse classic design with forward-thinking evolution, creating sophisticated lifestyles built on quality and the finest craftsmanship. Every detail is a testament to our unwavering dedication to excellence.

As the unrivaled leader in stainless steel outdoor kitchens, we don't just craft beautiful kitchens—we build lasting partnerships, empowering dealers, trades and professionals to bring bold visions to life. We deliver tailored solutions, expert insights, and unmatched quality, ensuring every project is executed with precision.

At Danver, your vision fuels our passion, and craftsmanship meets innovation to redefine what's possible.

## OUR VISION

Danver's vision for the future is simple. We will remain dedicated to our brand story and committed to bringing the indoors to the outside by: constantly innovating, discovering solutions based on market needs, exploring new and fresh colors and styles, and supporting our partners and customers.

Every design is a journey. We can't wait for what's next.



## UNRIVALED CRAFTSMANSHIP

At Denver, design is a shared journey. We transform your vision into reality, crafting not just extraordinary outdoor spaces but unforgettable experiences.

With dozens of styles in hundreds of sizes, as well as a multitude of powder coat finishes, any design is possible. Combined, our in-house designers have decades of experience with kitchen design – and they are more than happy to be your personal resource.

Our 304 standard and 316 marine grade stainless steel outdoor kitchen cabinets can be used in seemingly endless configurations in virtually all climates. All projects are made-to-order in the USA, ensuring that the details of your kitchen are exact to your specifications.

The craftsmanship of our outdoor kitchens is unmatched in the industry. Every component of your kitchen is touched by human hands, from the first bend of stainless steel to the final assembly and quality evaluation. Our doors are crafted from individual pieces of powder coated stainless steel, ensuring a seamless and beautiful finish.

We combine vision, creativity, and craftsmanship in everything we do, remaining committed to the high-quality experience that you expect from our brands.





STYLES & FINISHES



## DOOR STYLES

The clean look of stainless steel adds a sophisticated style to outdoor kitchen cabinetry. We bring function and beauty together with our exclusive stainless steel door styles.

Our stainless steel cabinet doors and drawer fronts provide functional strength and durability, while our extensive, award-winning color palettes - including bright and neutral colors, wood grain finishes, metallic hues, and textures - bring style, color, and design to any outdoor space.



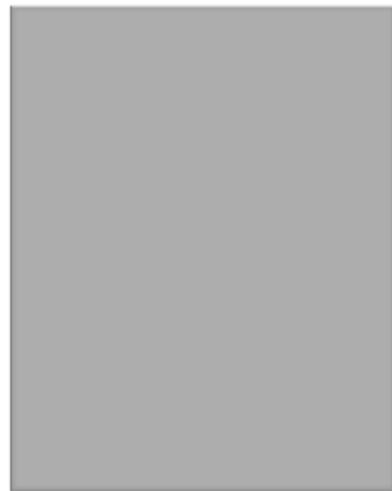


## CLASSIC DOOR STYLES

Our classic door styles are available for all brands and are designed to be stylish and versatile, compatible with more traditional elegant design as well as a sleek modern look.

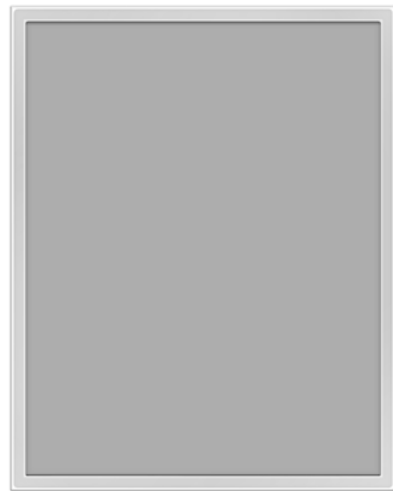
AVAILABLE IN ALL BRANDS

BROWN JORDAN OUTDOOR KITCHENS EXCLUSIVES



HAMPTON

Solid, flat panel door. Standard on all cabinets.



VENICE

Modern shaker style with a flat frame,  $\frac{3}{4}$ " reveal, solid center.



KEY WEST

Shaker style door with 2  $\frac{1}{16}$ " wide stiles and rails.



BEAD BOARD

Key West door with 1  $\frac{1}{2}$ " wide vertical panels in the center.



LOUVER

Key West door with individual horizontal louvers in the center.



PALM BEACH

Shaker style door with 3  $\frac{3}{4}$ " wide stiles and rails.



## KEY WEST SEA GLASS

Key West Sea Glass is a Key West style door with green tinted glass overlaying a powder coated panel. It is available in three colors: Seashell White, Mermaid, and Military Blue.

AVAILABLE IN DANVER & BROWN JORDAN OUTDOOR KITCHENS



SEASHELL WHITE



MERMAID



MILITARY BLUE





## POWDER COAT FINISHES

We recognize the value of color in our brand story. Our award-winning powder coat collection provides a vibrant wash of color and a nearly maintenance-free, long-lasting finish to your cabinetry.

## ESSENTIALS



Jet Black



Dark Anodized  
Bronze



Neptune Bronze  
Metallic



Argento



Slate



Plata 62



Winter Sky



Carlsbad Canyon



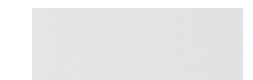
Ash Gray



Champagne 304



Sandstone



White Silk



Chromica Baltic



Interstate Blue



Military Blue



Mermaid



Chromica Feroe



Moss



Sea Spray



Boysenberry



Chili



Cotton Candy



Clementine



Autumn



Mint



Dark Highland



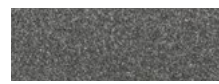
CLASSICS



Midnight Matte



Charcoal



Anthracite  
Metallic



Truffle



Champagne 302



Pearl Night Blue



Nu-Black  
Hammertone



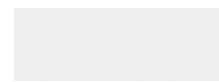
Metallic Bronze  
Matte



Pearl Dark Gray



Redwood



Seashell White

BROWN JORDAN EXCLUSIVES



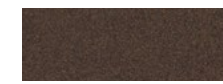
Sapphire



Platinum



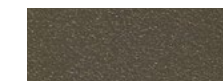
Titanium



Pompeiiian Gold



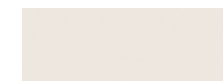
Night



Loden



Mica



Dove



## WOOD GRAINS



Chestnut



Burlwood



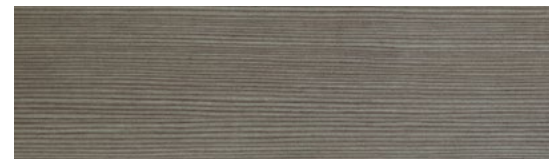
Walnut



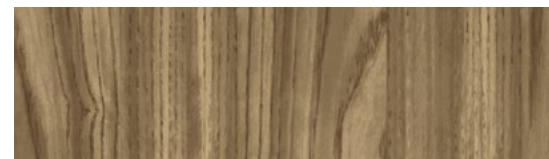
Teak



Cherry Flame



Horizon



Drift



White Washed Wood





## CABINET PULLS & HANDLES



Pulls and knobs put the finishing touches on your outdoor kitchen cabinets. Danver cabinetry comes with a standard stainless steel bar pull for a classic look, or a modern tab drawer pull. We also offer crafted knobs and pulls with living finishes from Ashley Norton Architectural Hardware.



## STANDARD BAR PULL

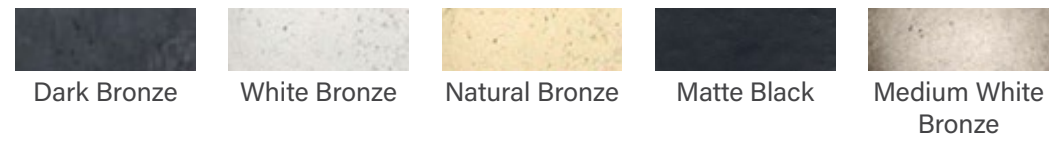
Our 316 marine-grade solid stainless steel standard bar pull is available in 6" and 12" variants, and features a satin finish.





## ASHLEY NORTON FINISHES

Our selection of Ashley Norton knobs and pulls are made of solid bronze and are available in the following finishes, unless otherwise noted:



## ASHLEY NORTON KNOBS & PULLS



ROUND KNOB 117



ROUND CONE 3189



HELIOS 3880



APOLLO 345  
6 3/4" 12 3/4"



URBAN 337  
6 3/4" 12 3/4"



MC7114  
(304 Stainless Steel only)  
6 5/8" 10 5/8"



HEX PROFILE 447  
6 1/2" 10 5/8"



L PULL 347  
4 1/2" 6 3/4" 10 3/4"



BAR PULL 341  
6 1/2" 10 1/2"







## CABINETS GUIDE

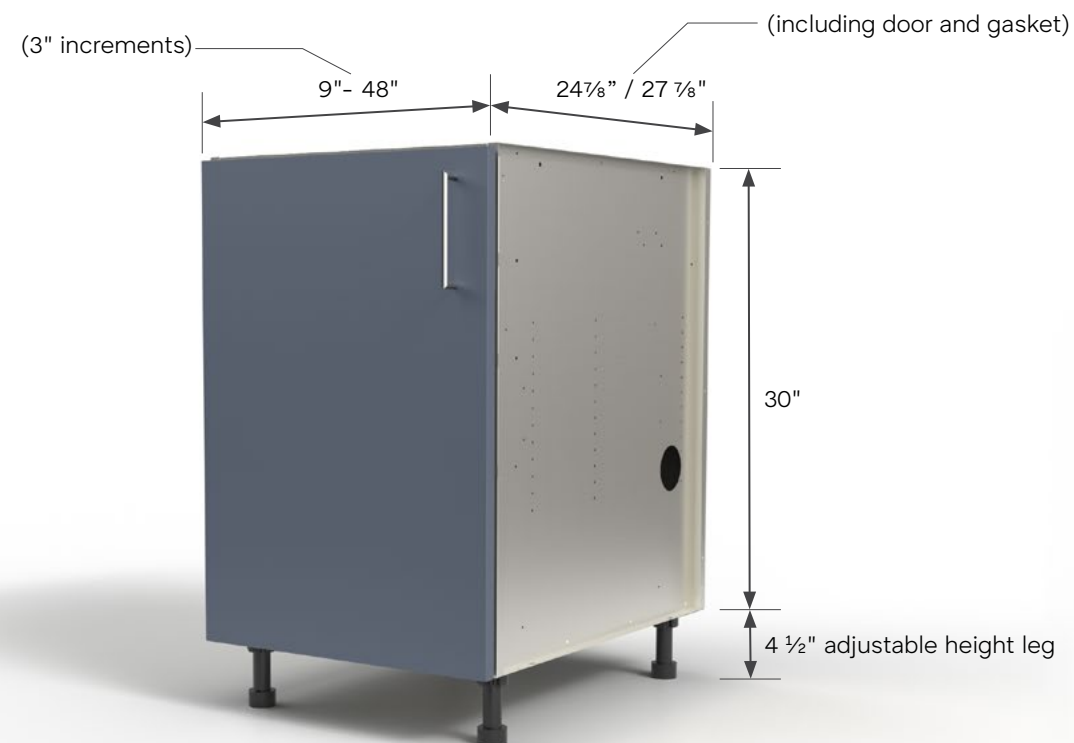


## CABINET DIMENSIONS

Our standard line of cabinetry is 27" (27 7/8" with door) deep, with an option for 24" (24 7/8" with door) deep. The standard cabinetry box height is 30". Our standard cabinet leg is adjustable from 3.75" to 5.75" (2" to 3.25" for ADA-compliant cabinetry).

We offer hundreds of parts and pieces, from custom fillers to end panels. Back panels and side panels are available for a finished look on all sides.

Dimension ranges shown normally include stops in 3" increments (e.g. a width range of 18"-27" will feature 18", 21", 24", and 27" widths). A limited selection of 13", 15", and 18" depth cabinets is also available.

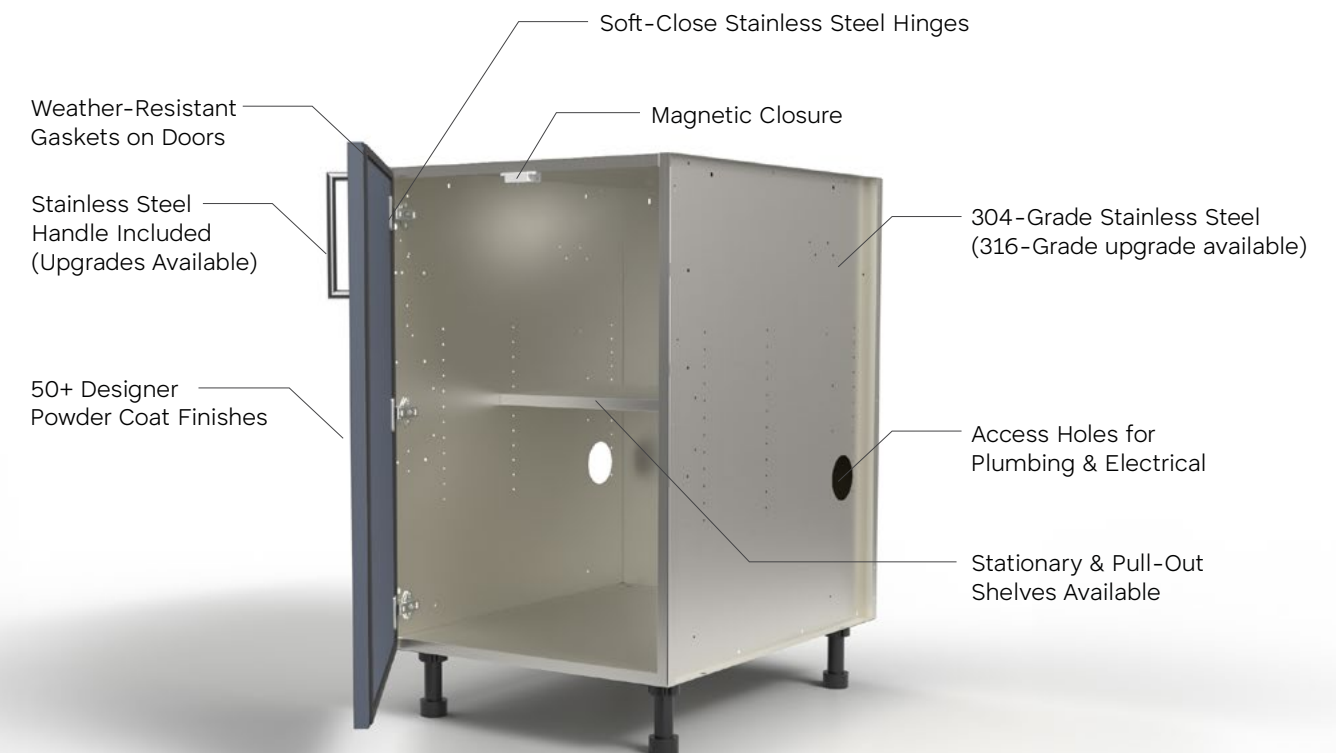


## CABINET FEATURES

All doors, drawers, and cabinet boxes are manufactured with 100% environmentally friendly 304 grade stainless steel. 316 marine-grade is also available as an upgrade.

Drawers feature double wall construction with soft-close/self-close technology. Cabinets come standard with magnetic catches and gaskets, as well as soft-close hinges. Both fixed and pull-out shelves are available.

ACCESS COMPREHENSIVE SPEC GUIDE











## FULL HEIGHT DOOR CABINETS

Full-Height Door Cabinets are available in widths of 9" to 48". Cabinets come with either one or two full-height doors (one door option for 9"-24" widths, two door option for 24"-48" widths). They are also available in a 15" depth (9" to 21" wide) and an 18" depth (24" to 48"). A 13" depth OBFWD is also available - please see full specifications guide for more details.

WIDTHS	9"	12"	15"	18"	21"	24"	27"	30"	33"	36"	39"	42"	45"	48"
DEPTHS	15"	18"	24"	27"										

## STORAGE CABINETS

Base Cabinets are the foundation for your outdoor kitchen, offering storage and convenience to your cooking and entertainment space. To that end, we offer a multitude of Base Cabinet styles, ranging from Full-Height Door Cabinets and Drawer/Door Cabinets to Sink Cabinets and Trash Cabinets. With plenty of unique solutions, Base Cabinets pull your space together and set it apart.



OBFxx01

OBFxx02



## DRAWER/DOOR CABINETS

Drawer/Door Cabinets are a flexible storage and organization solution. They are available with one door and one upper drawer in widths from 9" to 24". Drawer/Door Cabinets with two doors and one upper drawer are available in widths from 24" to 39".

WIDTHS	9" 12" 15" 18" 21" 24" 27" 30" 33" 36" 39"
DEPTHS	24" 27"



OBDxx11



OBDxx12

## MULTI-DRAWER CABINETS

Multi-Drawer Cabinets are available with 2, 3, and 4 drawers and are available in widths starting at a 9" and ranging to 36" wide. All Multi-Drawer Cabinets feature drawers that are manufactured with double-wall construction, full-extension under-mount glides and "soft-close" technology.

WIDTHS	9" 12" 15" 18" 21" 24" 27" 30" 33" 36"
DEPTHS	24" 27"



OBMxx30



OBMxx40



## SINK CABINETS

Sink Cabinets with a false drawer front and one door, or one full-height door, are available in widths ranging from 12" to 24". Sink Cabinets with a false drawer front and two doors, or two full-height doors, are available in widths from 24" to 48". We also offer Farm Sink Cabinets in 24" to 48" with one door or two doors, as well as Galley Sink Bases in widths of 30", 36", 48", 60", 72", and 84" with a false front or full-height doors. Sink Cabinets can accept drop-in appliances and have ventilation.

WIDTHS	12" 15" 18" 21" 24" 27" 30" 33" 36" 39" 42" 45" 48" 60" 72" 84"
DEPTHS	24" 27"



OBSxx01



OBSxx03 GALLEY

## TRASH PULL-OUT CABINETS

Trash Pull-Out Cabinets are convenient for outdoor cleanup. Trash Cabinets are available in widths from 15" to 27". Choose from a one basket (15" cabinet only) or two basket version. They are available with or without a drawer above the trash pull-out or a full-height door with a nested (hidden) drawer. We also offer a large 51 quart can version in widths of 21" and 24".

WIDTHS	15" 18" 21" 24" 27"
DEPTHS	24" 27"



OBTxx00



## CORNER CABINETS

Corner Base Cabinets are great storage solutions for L- and U-shaped outdoor kitchens. They are available in Diagonal, Blind, and Angled options.

Diagonal Corner Base Cabinets and Diagonal Corner Sink Base Cabinets are available in widths of 36" and 39" with one door.

Blind Corner Base Cabinets are available in widths of 30", 36", 42", 45", and 48", with one door or one door and one drawer.

Angle End Corner Bases are available with two doors in widths of 16.81" and 14.69".



AEB



DCB39

## TALL CABINETS

Tall Cabinets can be used for storage or house wall ovens and appliances. Tall Cabinets are available in heights of 84", 90", and 96". Tall Storage Cabinets are available with one or two full-height doors, one upper door and one lower door, or two upper doors and two lower doors.

WIDTHS	18" 21" 24" 27" 30" 33" 36"
DEPTHS	24" 27"
HEIGHTS	84" 90" 96"



TBxxyy FHD

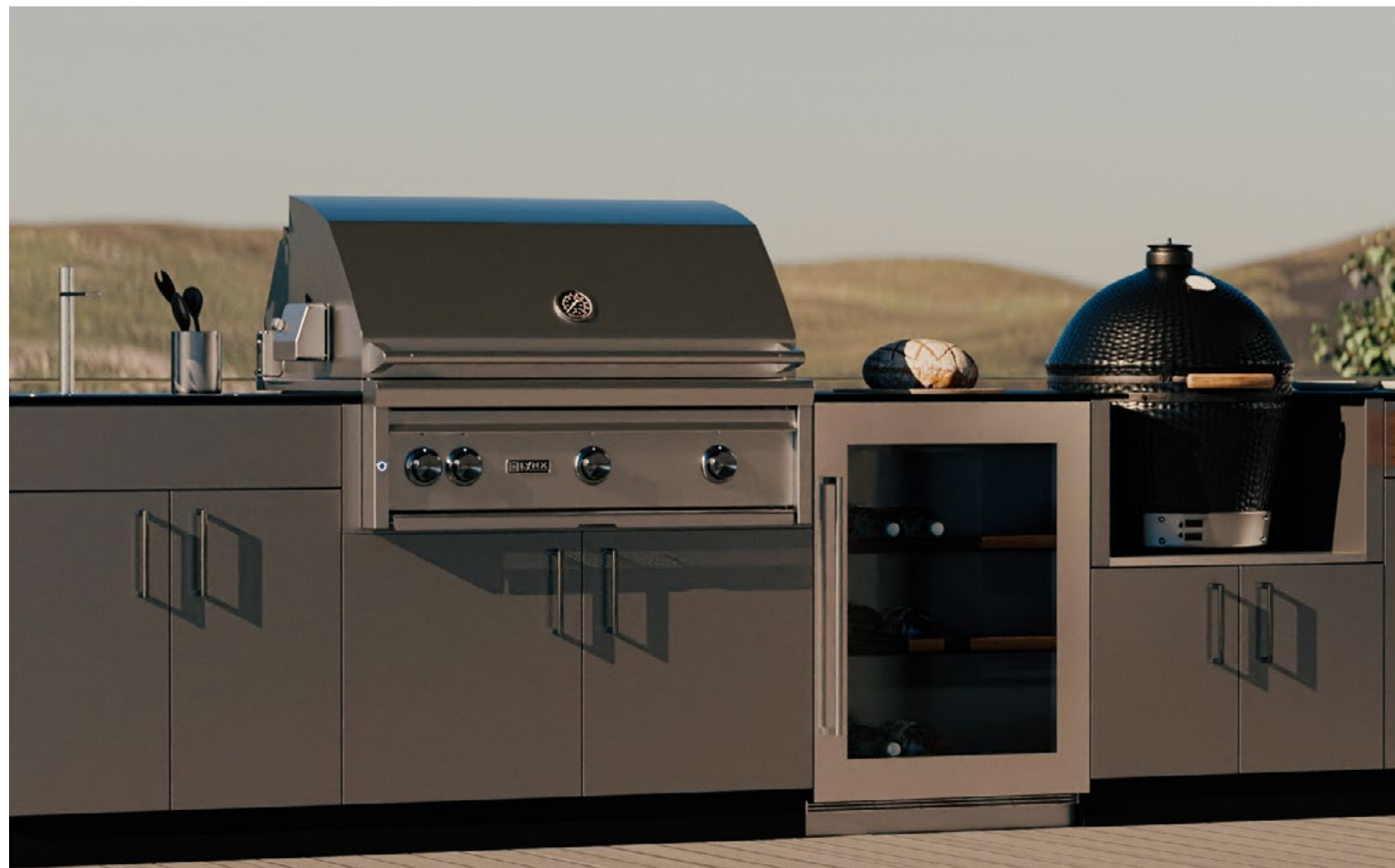


TBxxyy









## APPLIANCE CABINETS

For versatile cooking experiences, our Appliance Cabinets can support a variety of cooking styles. Appliance Cabinets are available with factory installed trim kits that accommodate nearly every outdoor appliance on the market, including specialty cooking appliances. They are available in widths ranging from 27" to 62", and they are specified 3" to 6" wider than the appliance width. Multiple options for doors and drawers round out a varied choice of applications.

## POWER BURNER CABINETS

Power Burner Cabinets are designed to accommodate side burners and power burners in both standard height and low versions. Power Burner Cabinets are available in widths ranging from 12" to 36" in 3" increments, with one door, two doors, or two drawers in the standard height version and one door, two doors, or one drawer in the low version. Low Power Burner Cabinets are specified 7.5" wider than the Power Burner cutout.

WIDTHS	15" 18" 21" 24" 27" 30" 33" 36"
DEPTHS	24" 27"



OBBxx02 LOW



## CERAMIC EGG SMOKER CABINETS

Ceramic Egg Smoker Cabinets house egg-style smoker grills from a variety of manufacturers. Ceramic Egg Smoker Cabinets are available in widths of 27" or 33", and they include additional support for egg grills.

### Regular Base

WIDTHS	27" 33"
DEPTHS	27"

### Diagonal Base

WIDTHS	36" 39"
DEPTHS	27"



OEBxx02 H16.5



DCBE39

## BARTENDER STATION CABINETS

Bartending Center and Cocktail Station Base Cabinets are designed to accommodate appliances from various manufacturers, even stations with a deeper cutout. Bartending Cabinets are available in widths ranging from 15" to 39", with two doors and a specified number of shelves (available separately).

WIDTHS	15" 18" 21" 24" 27" 30" 33" 36" 39"
DEPTHS	24" 27"



OBCxx10



OBCxx02 H11



## WARMING DRAWER CABINETS

Warming Drawer Cabinets are designed to house warming drawer appliances that keep food warm for hours, helping preserve fresh food until it is ready to serve. Warming Drawer Cabinets are available in widths of 30", 33", and 36", with one drawer, two drawers, or a single door.

WIDTHS	21" 24" 27" 30" 33" 36"
DEPTHS	24" 27"



ODWxx00 H14



OBWxx02 H12











## DOOR GRILL CABINETS

Door Grill Base Cabinets are available in widths ranging from 30" to 48" in 3" increments, as well as 54", 58", and 62". Depending on the specified size, Door Grill Base Cabinets are available with two doors or three doors.

WIDTHS	30" 33" 36" 39" 42" 45" 48" 54" 58" 62"
DEPTHS	24" 27"

## GRILL CABINETS

A grill is a must-have for any outdoor space. Grill Cabinets can accommodate nearly every model with factory installed trim kits for a seamless fit and finish. They are available in widths ranging from 30" to 62", and they are specified 3" to 6" wider than the grill width. For plenty of storage and organization options, choose from a selection of door and drawer configurations, including bases with a warming drawer.



OGBxx02



OGBxx03



## DRAWER/DOOR GRILL CABINETS

Drawer/Door Grill Cabinets offer plenty of storage and organization beneath the grill. They are available in widths ranging from 30" to 48", as well as 54", 58", and 62". They include two drawers or four drawers and one door or two doors, depending on the specified size.

WIDTHS	30" 33" 36" 39" 42" 45" 48" 54" 58" 62"
DEPTHS	24" 27"



OGBxx22



OGBxx41



OGBxx40



OGBxx60

## DRAWER GRILL CABINETS

Drawer Grill Cabinets are a useful solution for organization beneath the grill and are available in widths from 36" to 48", as well as 54", 58", and 62". They include four drawers or six drawers. Full-Height Drawer Grill Cabinets are available in widths from 30" to 48", as well as 54", 58", and 62". They include two or three full-height drawers.

WIDTHS	30" 33" 36" 39" 42" 45" 48" 54" 58" 62"
DEPTHS	24" 27"









## WALL CABINETS

Wall cabinets are excellent solutions for storage space in your outdoor kitchen. Effortlessly store outdoor kitchen necessities, such as dishware, glassware, and cooking equipment.

Outdoor wall cabinets are available in 3" increments from 12" to 36" wide. Standard heights also start at 15" and go to 42". The outside dimension is 13" (13 7/8" including door).

## WALL STORAGE CABINETS

Wall cabinets are available with single or double doors. Corner cabinets and open shelf cabinets are also available. Please see comprehensive spec guide for all variants. Standard outdoor wall cabinets are available in 3" increments from 12" to 36" wide. Standard heights also start at 15" and go to 42".

WIDTHS	12" 15" 18" 21" 24" 27" 30" 33" 36" 39" 42" 45" 48"
DEPTHS	13" 24"
HEIGHTS	15" 18" 21" 24" 27" 30" 33" 36" 39" 42"



WS2439



WDC36



## WALL MICROWAVE CABINETS

Wall Microwave Cabinets are available in 24", 27" and 30" widths and 30", 33", 36" and 42" heights. All microwave cabinets feature an opening with a shelf for the microwave appliance and two doors above it. Please see comprehensive spec guide for all variants.

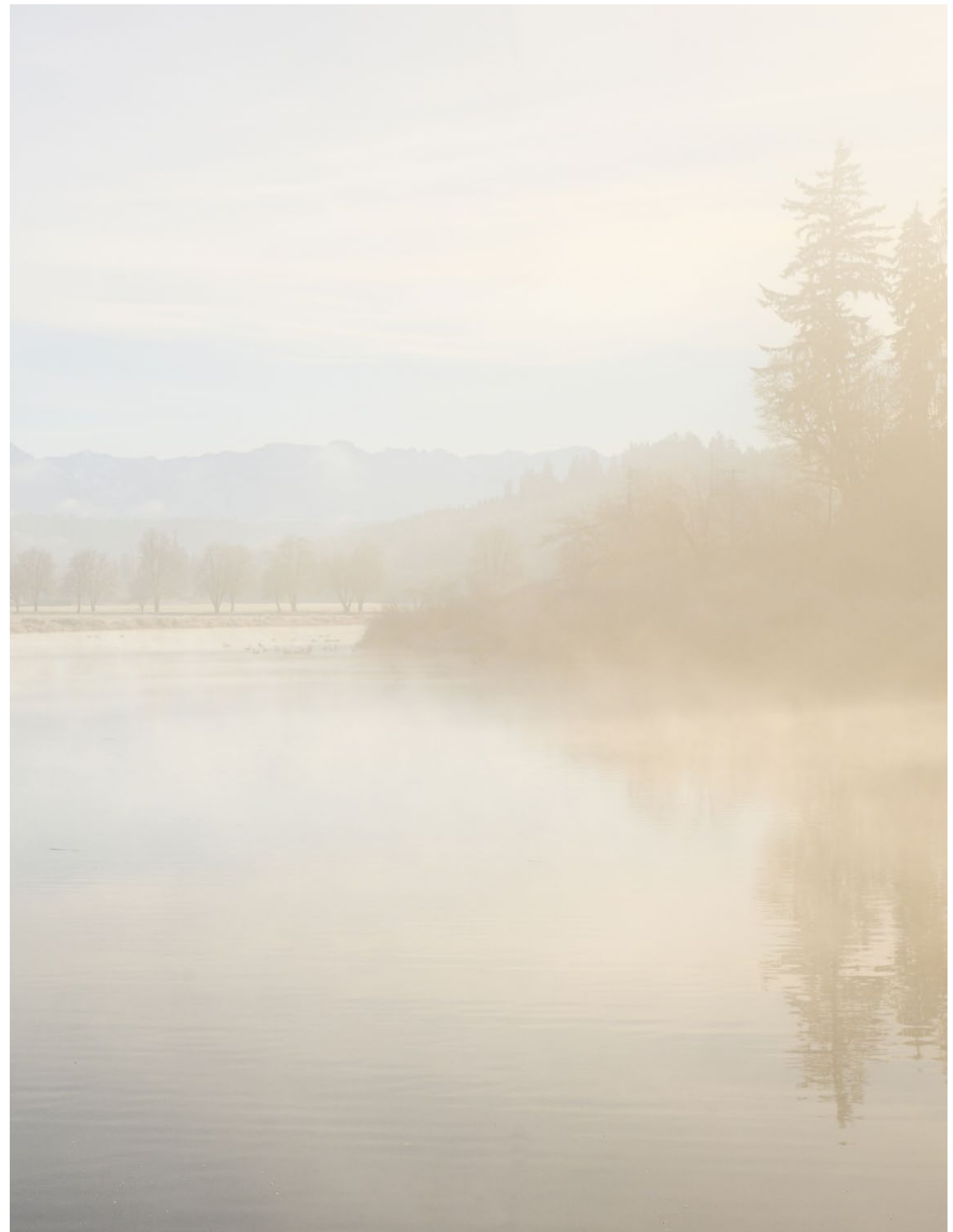
WIDTHS	24" 27" 30"
DEPTHS	18"
HEIGHTS	30" 33" 36" 42"



WMC2436



WMC2733







## DRAWER INSERTS

Stainless steel spice rack inserts and drawer dividers are available with a powder coat finish, providing for a durable and stylish solution for added convenience and optimized storage. Available in 15", 18", 21" and 24" widths to match appropriate cabinet widths.

## KITCHEN ACCESSORIES

Danver's new line of Kitchen Accessories integrates seamlessly into the outdoor kitchen cabinetry for added convenience and organized storage. Made of stainless steel and available with a powder coat finish, the kitchen accessory line is a durable, stylish solution for organized storage.



SPICE RACK INSERT



DRAWER DIVIDER









PARTNERSHIPS





## DEALERS

Danver Dealers take an active role in learning about our products to provide well-developed designs and excellent customer service.

To that end, we are fully committed to supporting our Dealers and maintaining a lucrative and successful partnership.





## TRADES & PROFESSIONALS

Our partnerships are designed to provide a best-in-class design and service experience. As a trade and professional partner, you will be paired with dedicated sales liaisons who are committed to luxurious outdoor kitchen solutions for your clients.

In order to achieve our shared goals and bring to life our clients' visions, we partner with a large network of trades and professionals. Our partners include, but are not limited to:

ARCHITECTS

LANDSCAPE ARCHITECTS

DESIGNERS

BUILDERS





Our partners gain access to a network of trusted vendors, exclusive trade benefits, and personalized support. Additionally, we offer sales and marketing support to help our partners convey value to their clients, product model libraries to facilitate the design and visualizations, and continuing education courses to provide a thorough understanding of our products and processes. We are thrilled to be your personal resource on your design journey. Let us bring your vision to life.

[LEARN MORE ABOUT PARTNERING WITH US](#)





## MULTI-FAMILY

With cabinetry that guarantees accessibility in common-use amenity spaces, our high-quality, low-maintenance outdoor kitchens elevate the cooking and entertainment prospects of your property.

Our effortless design process is tailored for your needs, providing solutions that will increase the value of your space while eliminating costly replacement and upkeep. Our product flexibility allows your project to easily conform to ADA compliant height and ensures proper clearances and wheelchair access. We also offer a line of specialized ADA cabinetry.





## POST & PANEL SYSTEM

Our Post and Panel System (PPS) is an innovative solution that we created for Multi-Family common areas. It combines all the aesthetics that you would expect from Denver without unnecessary storage. The result? A cost-effective, stylish, and high-performance outdoor kitchen system.

The PPS's removable panels can be replaced and easily cleaned. It provides plenty of countertop support, extended workspaces, and the system is shipped flat – making it easy to install on site.





## HOSPITALITY

Outdoor entertainment spaces with pools, outdoor kitchens, and dining areas are spreading to resorts, country clubs, golf courses, and hotels to offer customers an unforgettable experience.

With our luxurious outdoor kitchen solutions, we are dedicated to creating hospitality environments that stand apart for excellence in craftsmanship and versatility. Choose from rolling carts (48"-72") and traditional cabinetry, with features like bar height seating, locking cabinets, and ADA compliancy.







EXCLUSIVE COLLECTIONS





OUTDOOR LIVING





## DANVER OUTDOOR LIVING

Danver Outdoor Living is a line of products designed to enhance outdoor spaces and provide opportunities to match storage, seating, and more items to Danver's premium outdoor kitchens. Our Outdoor Living products use the same durable stainless steel as our cabinetry and are powder coated for minimal maintenance and easy care.

[ACCESS ADDITIONAL SPECS ON OUTDOOR LIVING](#)

## OUTDOOR LIVING ITEMS

Outdoor living items are available in different sizes to suit specific needs. Items from this collection can also be ordered separately from outdoor kitchen cabinetry.



ASCENTO PLANTER BOXES Stainless steel planter boxes with rounded corners. Available in three sizes, comes with powder coat finish (wood grain unavailable).





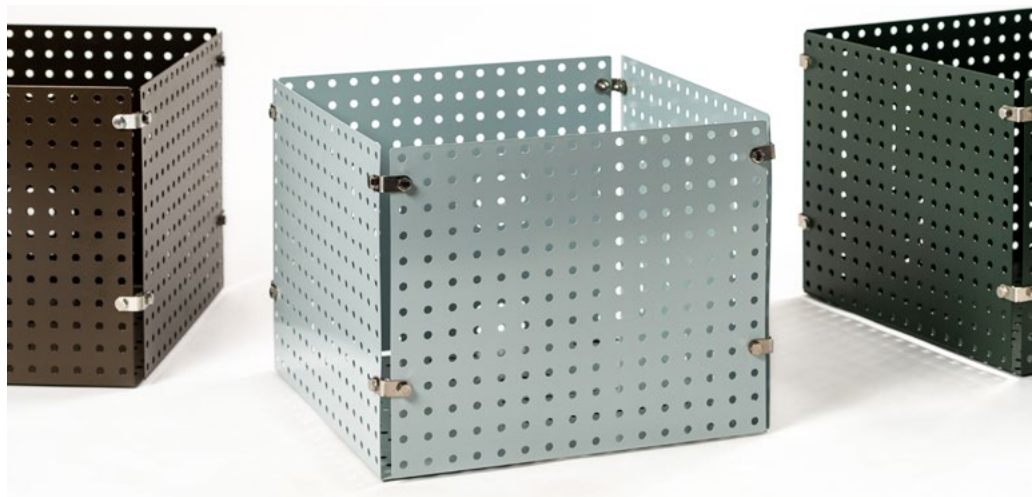
ASCENTO BENCH

A stainless steel bench with rounded corners. Available in two sizes, comes with powder coat finish (wood grain unavailable). Cushion not included.



NESTED TRAYS

Stainless steel nested trays for serving or organizing. Available in shallow, tall, and tapered design variants, powder coat finish (wood grain unavailable).



PERFORATED BASKETS

Perforated stainless steel baskets are storage containers with a powder coat finish (wood grain powder coats not available).



DOG BOWLS

Dog bowls are offered with holders of three different sizes. Holder is stainless steel with powder coat finish (wood grain powder coat finishes unavailable) and bowls are stainless steel.









## ELEMENTS

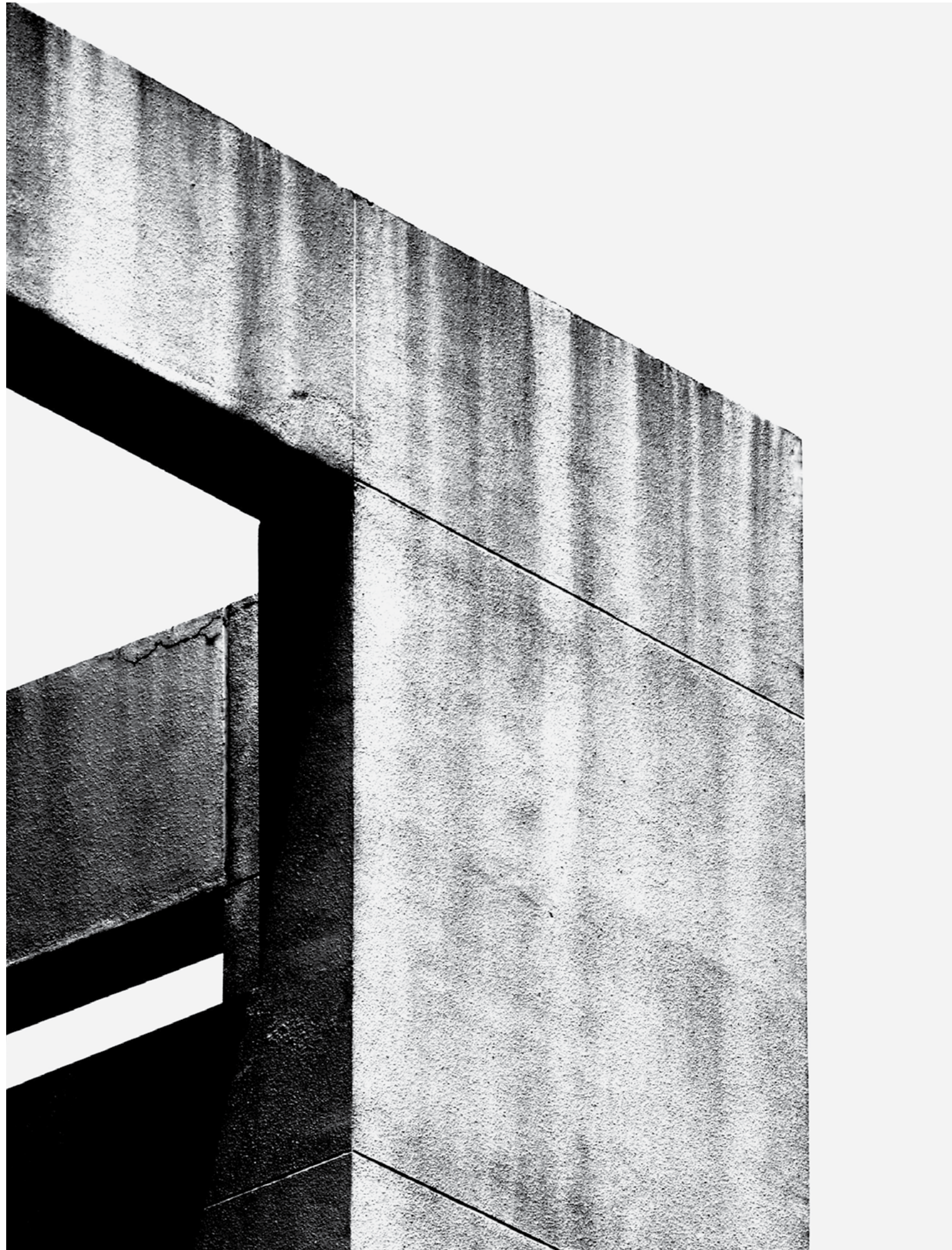
Elegant, understated, and sure to turn heads. The ELEMENTS™ collection, designed in collaboration with Daniel Germani, presents a minimalist aesthetic with features like nested drawers, full-height door fronts, and integrated handles. The collection's attention to detail includes powder coated interiors using any of our standard finishes, optional pass-through cabinets, and a two-tone color option for a stunning contrast.

[ACCESS ADDITIONAL SPECS ON ELEMENTS](#)









## URBANE

Danver is proud to offer Urbane, a collaboration with the brand's creative director Daniel Germani. Drawing inspiration from heritage-style European kitchens, Urbane brings timeless, sophisticated design to the outdoors.

The collection's careful attention to detail offers visual contrast through a blend of traditional stainless steel or powder-coated framing and center panels, empowering design professionals to create outdoor kitchens to fit any footprint, style and function. In keeping with Danver's standards, Urbane offers options to integrate a sink, appliances or other components.

[ACCESS ADDITIONAL SPECS ON URBANE](#)









## COSMOPOLITAN COLLECTION

Created in collaboration with creative director Daniel Germani, the Cosmopolitan Kitchen collection offers a fresh, minimalist design. It features powder coated stainless steel construction with an aluminum frame, providing resistance to weather effects across all climates. The unique stainless steel drawer and storage boxes can hang from the top rail or be attached to the lower shelf, allowing for the functionality and versatility that are synonymous with the Danver brand.





## COSMOPOLITAN KITCHENS

Cosmopolitan Kitchens is a special series that makes use of aluminum frames, shelving, and storage boxes to create a highly modular approach to outdoor kitchen design. Cosmopolitan Kitchens come in 42" and 60" lengths and can be combined as needed, while storage boxes are available in different configurations and can be ordered to design specifications. Tall kitchen units are also available.

[ACCESS ADDITIONAL SPECS ON COSMOPOLITAN KITCHENS](#)







## COSMOPOLITAN TABLES

Cosmopolitan Tables and Buffets are stand-alone units that can be integrated into any outdoor kitchen. The collection includes six product offerings, manufactured with aluminum framing and powder coated stainless steel: Prep, Store, Eat, Cook, Buffet Cook, and Buffet Store. The Cosmopolitan Cook and Cosmopolitan Buffet Cook are prepped to fit the Invisacook induction burner technology, which is ideal for small spaces where a grill may not be practical. Cosmo tables are available with or without casters.

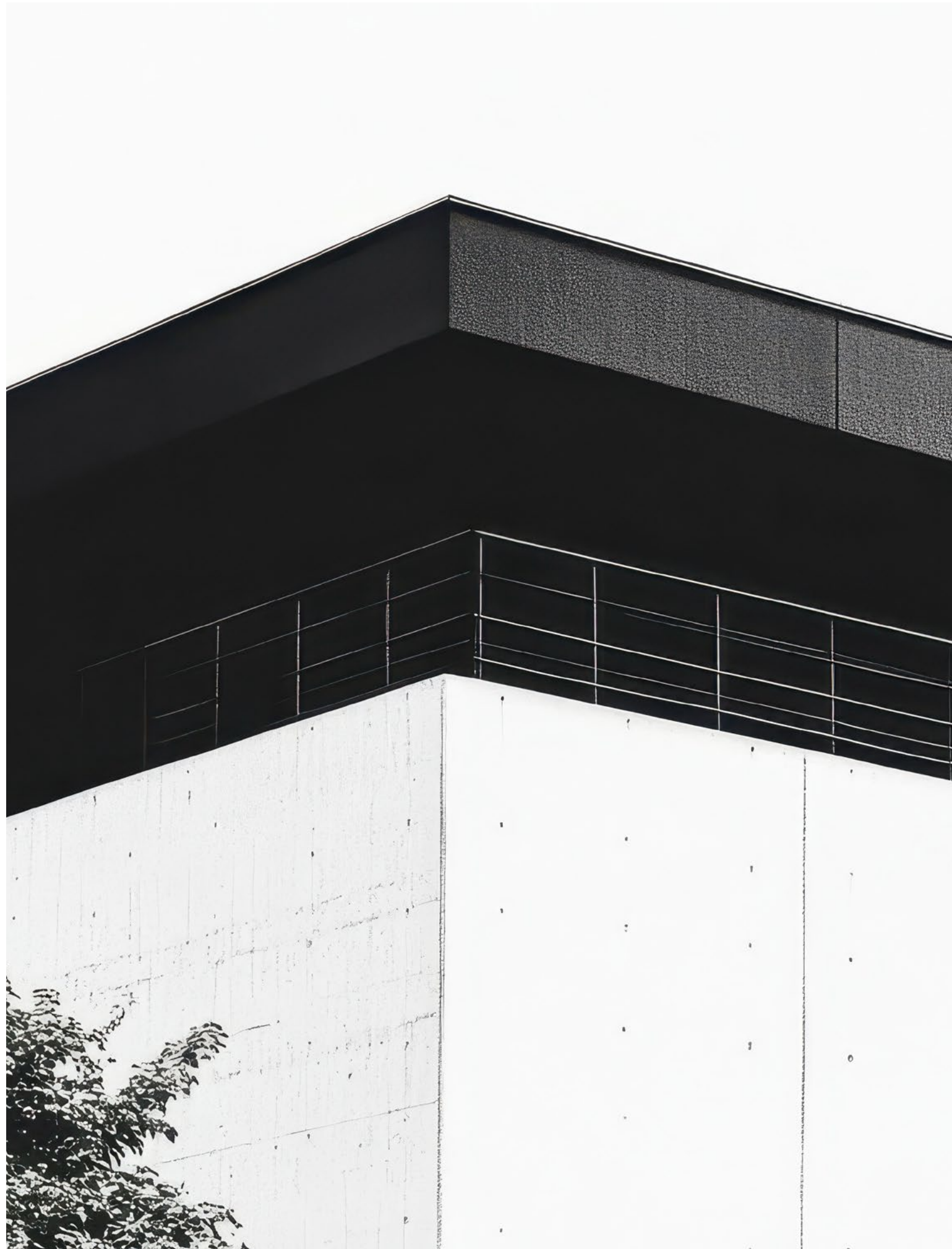
[ACCESS ADDITIONAL SPECS ON COSMOPOLITAN TABLES](#)











## CUBE

CUBE pushes the boundaries of stainless steel design. Designed in collaboration with renowned global designer Luca Nichetto, CUBE embraces its modularity as a “design language” with distinct shapes and contrasting colors. The result is a stunning and distinctive line with the flexibility to provide solutions for small, urban settings or to be built out for more comprehensive outdoor entertaining spaces.

[ACCESS ADDITIONAL SPECS ON CUBE](#)









## TECNO

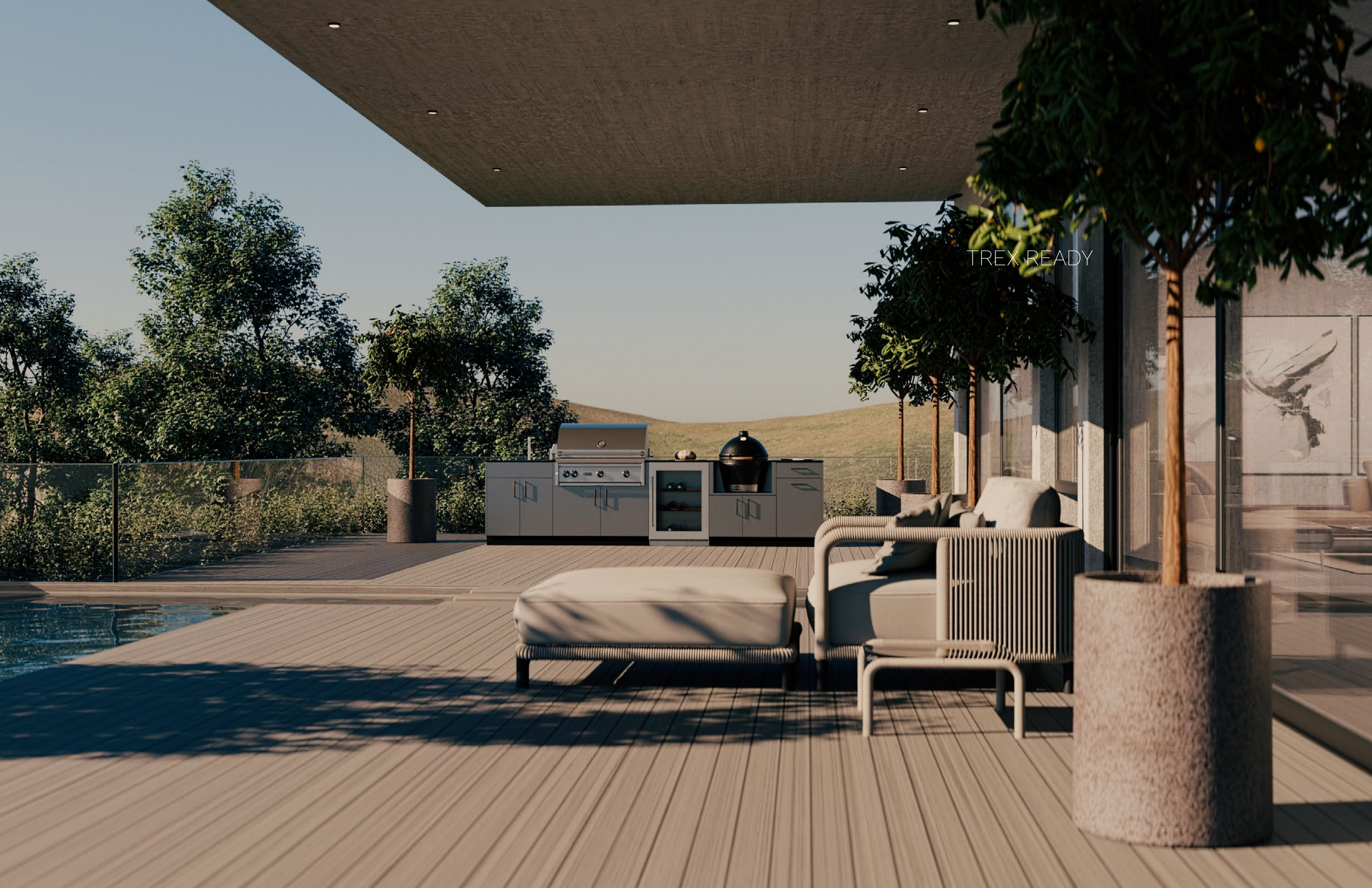
TECNO is an evolution of modern living, developed through our collaboration with Daniel Germani. This Euro-inspired collection is set apart for its clean lines and high-performance functionality. Features include a sleek frameless design, single-height façade, and nested, soft-close drawers with integrated pulls. Designed with versatility in mind, TECNO accommodates a variety of appliances and configurations and is equally at home outdoors and indoors.

[ACCESS ADDITIONAL SPECS ON TECNO](#)









TREX READY





## TREX READY

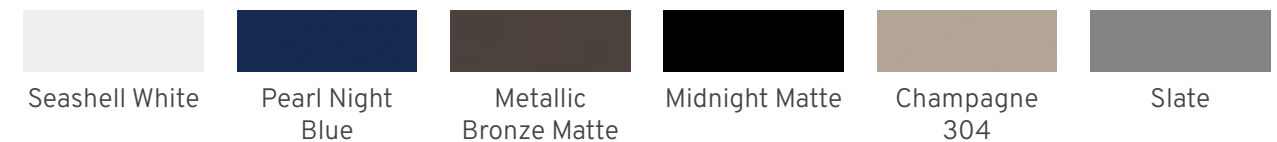
Choose from seven different layouts and six different powder coat finishes to create your perfect outdoor space. Trex-Ready outdoor kitchens are designed to accommodate grills up to 42" wide, standard kitchen sinks, and below-counter refrigerators. Trex Ready™ kitchens are constructed with 304 standard-grade stainless steel and designed to provide long-lasting luxury in your outdoor space.

The Trex Ready™ series brings together some of our most popular layout configurations with the option of six designer-curated powder coat color finishes. Ranging from an elegant grilling station solution to a sprawling outdoor kitchen that'll be the heart of your outdoor space, there's a Trex Ready™ layout to suit your needs.

[ACCESS ADDITIONAL SPECS ON TREX READY](#)

## TREX READY CONFIGURATION OPTIONS

All Trex Ready layouts are available in the following powder coat finishes:



Trex Ready outdoor kitchens are customizable in just a few simple steps:

### SELECT LAYOUT

Find the ideal kitchen cabinet and appliance configuration for your outdoor space. The seven available layouts address a variety of appliance and storage needs.

### DETERMINE GRILL SIZE

Kitchens are designed to fit up to 42" grills from select manufacturers. Grill size will determine the width of the grill cabinet as well as the overall width.

### SELECT COLOR

Choose one of six unique designer-curated powder coat finishes for your cabinets. Match the aesthetic of your outdoor environment or introduce a splash of color to your outdoor space.

### BACK PANEL OPTION

If the back of your kitchen is going to be visible, add powder coated back panels for a finished look from all angles.



## TREX READY LAYOUTS

The available layouts provide a variety of sizes and appliances to accommodate lifestyles and cooking preferences. Please note that GROVE and ALCOVE layouts can only fit 30"-36" grills. Dimensions listed show total width of cabinet run with a 30"-36" grill cabinet, dimensions in parentheses show total width of cabinet run with a 42" grill cabinet.



HAVEN

This grill-centric configuration flanks the centerpiece with two drawers and adds storage space on either side of and below the grill.

WIDTH 76 1/2" (82 1/2")



ARBOR

Designed with entertainment in mind, Arbor adds a refrigerator space and additional workspace on the left side of the grill cabinet. It is rounded out with a trash pull-out cabinet and storage.

WIDTH 100 3/4" (106 3/4")



VERANDA

Veranda offers additional cooking capabilities with a side burner cabinet next to the grill cabinet. It includes a refrigerator space and a trash pull-out cabinet for easy food prep and cleanup.

WIDTH 103" (109")





RETREAT

This configuration is generous with storage and counter space. It includes a door/drawer combination base cabinet, a side burner cabinet, and a trash pull-out cabinet.

WIDTH 112 1/2" (118 1/2)"



OASIS

The complete cooking and entertainment package, Oasis accommodates a sink cabinet, a refrigerator space, a grill cabinet, a trash pull-out cabinet, and drawer/door combination base cabinet.

WIDTH 127 3/4" (133 3/4)"



GROVE

Grove is the ultimate cooking solution. Featuring cabinets that accommodate a sink, grill, refrigerator, trash pull-out bin, and a smoker, you will have all the appliances you need for food prep and cooking.

WIDTH 136 3/4"



ALCOVE

The most generous layout for storage, Alcove is complete with cabinetry for a grill, sink, and refrigerator. This L-shaped configuration offers ample counter space for all your cooking requirements.

WIDTH 142" SHORT SIDE WIDTH 70"









ELEVATED DESIGN FOR TODAY AND BEYOND

Danver has been the standard in high-performance stainless steel outdoor kitchens for over 25 years. With exceptional customer care and our team of experts, we have been providing professionals of all disciplines with industry-leading solutions and the flexibility to create signature outdoor kitchens anywhere.

Working with Danver guarantees support at every step of the process, offering an extraordinary service experience and the freedom to create beautiful spaces that will be sources of design inspiration for years to come.



1 Grand Street, Wallingford, CT 06492

© 2025 Brown Jordan® Outdoor Kitchens is manufactured and sold by Danver LLC, under a Trademark Agreement with Brown Jordan, Inc

© 2025 Trex® Outdoor Kitchens is manufactured and sold by Danver, LLC., under a Trademark Agreement with Trex Company, Inc.