

DANVER

STAINLESS
OUTDOOR
KITCHENS

TM



Specification Guide: Urbane Collection

Revision: 6-26-2024

Table of Contents

Urbane Design Features	5
Urbane Design Examples	6
Urbane Cabinet Nomenclature	10
Urbane Door Powder Coat Options	11
Urbane Powder Coat Selection Guide	12
Storage Base Cabinets	13
Full-Height Doors: URB OBFxx01, xx02	14
URB OBFxx11N, xx21N,xx31N	15
Sink Base Cabinets	16
Full-Height Door: URB OBSxxxx-FHD	17
Trash Base Cabinets	18
URB OBTxx00. Nested top drawer: xx10N	18
Grill Cabinets	19
Full-Height Drawers: URB OGBxx20, xx30	20
11"H Shelf: URB OGBxx20H11, xx30H11	21
12.5"H Shelf: URB OGBxx20H12.5, xx30H12.5	22
URB OGBxx20-CALIBER ROCKWELL, OGBxx20P	23
URB OGBxx20-EVO	24
Side Burner Base Cabinets	25
1 Door: URB OBBxx01, xx01H11, xx01H12.5	26
1 Drawer: URB OBBxx10, xx10H11, xx10H12.5	27
2 Doors: URB OBBxx02, xx02H11, xx02H12.5	28

Table of Contents

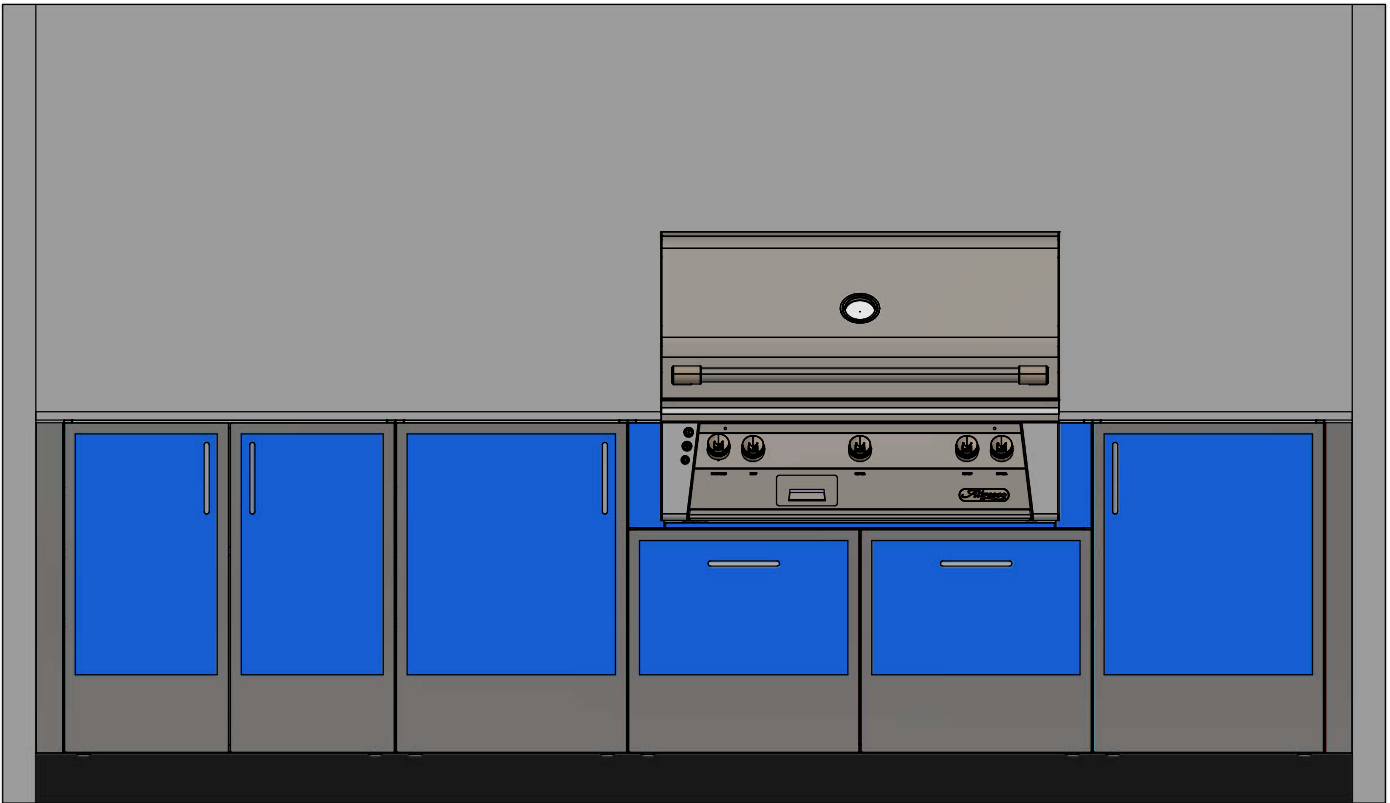
Warming Drawer Bases	29
URB OBWxx10H12, OBWxx10H14.13	29
Bartending Center Cabinets	30
1 Door: URB OBCxx01. 2 Doors: xx02	30
URB OBCxx01H11, xx02H11	31
URB OBCxx01H12.5, xx02H12.5	32
Cabinet Accessories: Nomenclature	33
Galvanized Vented Back Panels: OBPVGF	34
Urbane Equal Back Panels	35
Flush End Panels: OFE xxL/R, URB OFEGFxx	36
Side Panels: URB OSPxxL/R, Overlay Panels	37
Front Fillers: OFLFxx, OFLF ENDxx	38
Rear Filler: OFLxx	39
Half and Full-Depth Shelving: OSHxx	40
Pullout Shelving: OSHxxP	41
Pullout Ice Chest: OSHxxPCHEST	42
Propane Pullout: OPPxx	43
Undercounter Appliance Parts	44
Front Corner Fillers: OAF90/45xx	45
Corner Void Support System: OAR90xx	46
Countertop Support Columns: OBXzz.zz x.xx	47
Countertop Support Columns: ORPzz.zz x.xx	48

Table of Contents

OBX Width Skin: OBXF xx	49
Undercounter Appliance Spacers: ORSxx	50
Miscellaneous	51
Urbane Standard Handle Placement	51
Standard Legs and Toe Kick	52

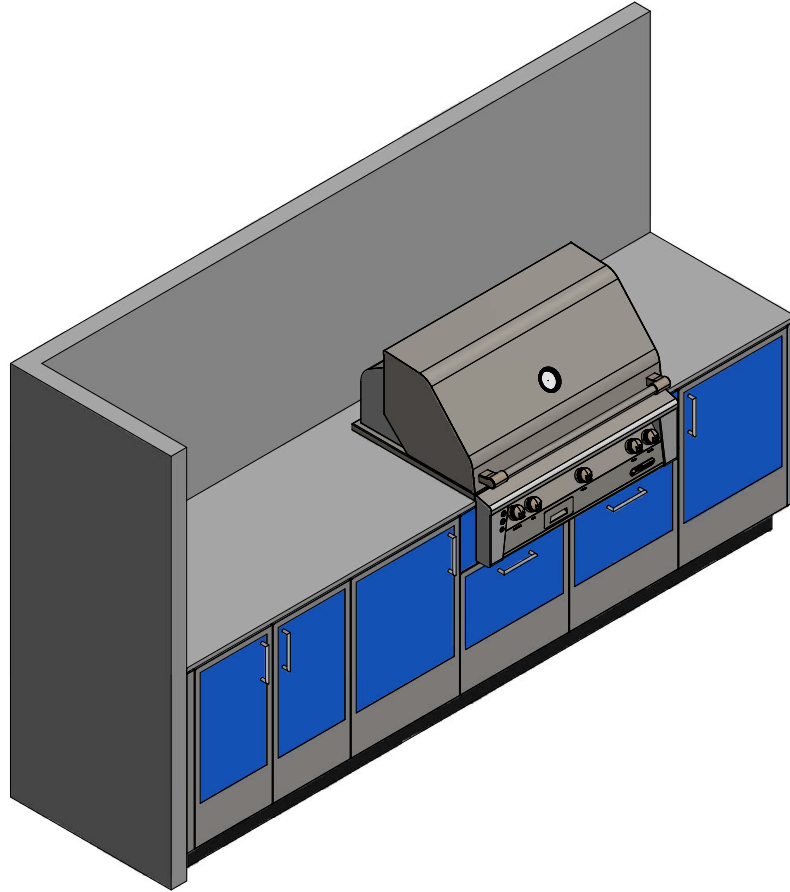
Key Design Features:

- Drawer or Door Panel is intended to have a contrasting panel and frame. Therefore, there are no monochromatic applications.
- Refrigerators are preferred to be shown in the middle of runs rather than ends whenever possible.
- Drawer or Door Panels come in 15", 18" and 21" widths.
- Finished sides have an integrated Urbane door made at 1.5" wide.
- Finished Back panels must be Equal when used and will show Urbane style doors. Standard OBPxx parts cannot be used.
- Urbane door overlay panels can be applied to 1 door refrigerators and icemakers but not 2 drawer units.
- Toe kick selected must be black. Powder coated aluminum and stainless steel options are unavailable.
- All standard doors, drawers and cabinet boxes are manufactured from 20g 304 stainless steel or choose to upgrade to 316 marine grade.
- European frameless, solid top construction with full overlay doors.
- Standard 30" high cabinet boxes plus 4.5" leveling legs adjustable from 3.75-5.75" or 2-3.25" ADA leg heights.
- Cabinet depths are standard 27.88" or optional 24.88" which includes 7/8" for drawer(s), door(s), and gasket material projection.
- Concealed door hinges, full extension, soft-close drawer glides on residential projects.
- Magnetic door closures and rain gaskets are standard on cabinetry.
- #2 matte non-directional finish interior standard on Denver Stainless Outdoor Kitchen cabinets.



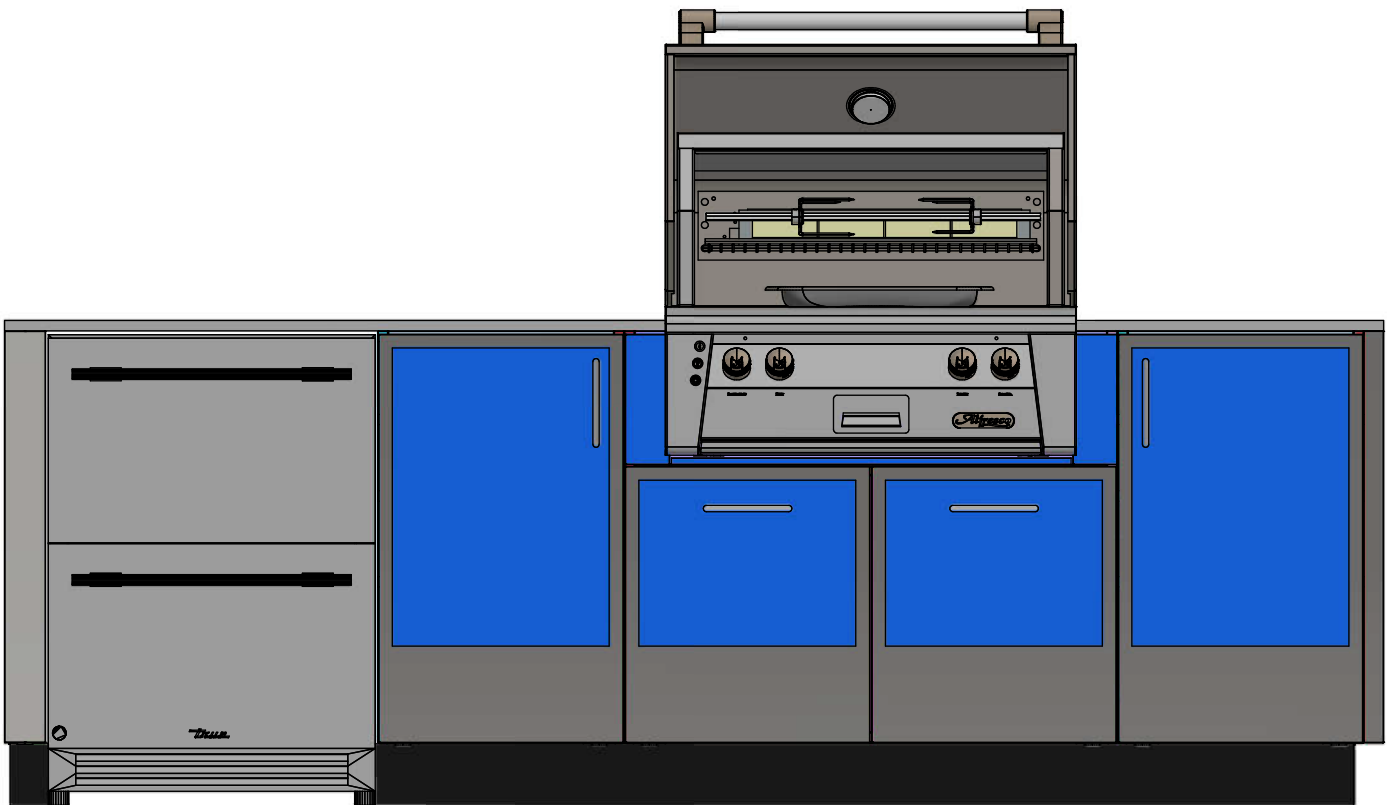
Cabinet run - Between Walls

- Always use two OFLF END 1.50 for runs between two walls to maintain design symmetry.
- OFLF END 1.50 color will ALWAYS match the Urbane door frame color. The Urbane door frames above are left as stainless steel, therefore, the fillers on each end will be stainless steel.
- Urbane OBX box columns are always 3" wide.



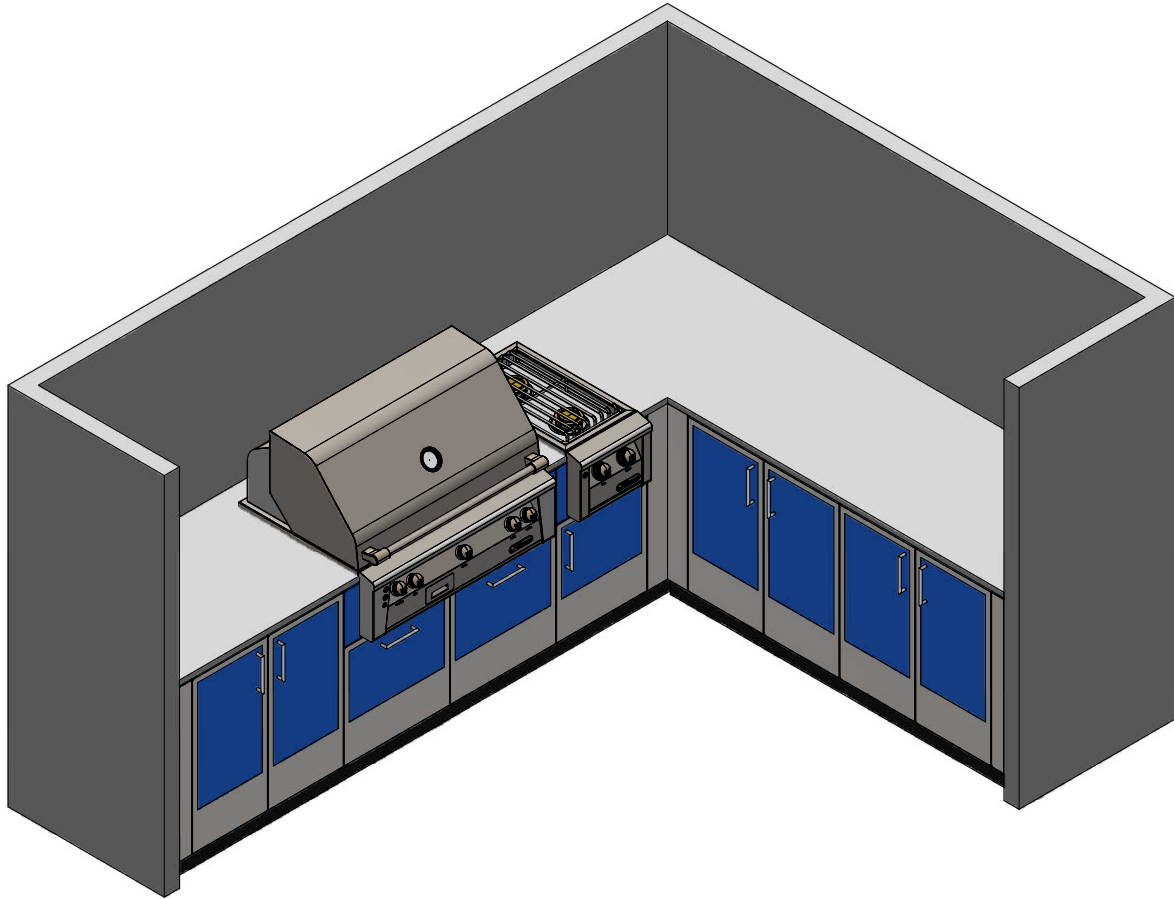
Cabinet run - 1 Wall, exposed on 1 side

- Use OFLF END 1.50 on one side of the run and URB OSP XX (which is 1.5" wide) to finish run on other side while maintaining design aesthetics.
- OFLF END 1.50 color will ALWAYS match the Urbane door frame color. The Urbane door frames above are left as stainless steel, therefore, the fillers on each end will be stainless steel.
- Urbane OBX box columns are always 3" wide.



Refrigerator Box Column to End Run

- Urbane Refrigerator Columns are 3" wide and have an integrated Urbane door built into the side. The part names are: URB ORPxx.xx 3.00 (xx.xx denotes cabinet depth plus back panels if applicable). Urbane Refrigerator columns will match the same colors as the Urbane doors.
- Urbane side panels are always made at 1.5" wide and have the Urbane door built into the panel.
- Urbane OBX box columns are always 3" wide.



Corner/L-shaped Run against Walls

- Urbane corners must use the OAF90xx corner part in any available widths from the Denver line. If an OAF90 12.00 is used, the dimensions to the left of the bend must total 12" in any combination (i.e. 4"L/8"R, 6"L/6"R, and so on).
- OAF90xx corner fillers will match the Urbane door frame color selected. The frames in the example above are stainless steel, therefore, the OAF90xx will be left as stainless steel.
- Urbane runs with front fillers against walls must ALWAYS be 3" (OFLF END 3.00) to preserve the intended design aesthetic.
- Urbane OBX box columns are always 3" wide.

Urbane Cabinet Nomenclature

[*Return to Table of Contents](#)

- All Denver Base cabinets use specific nomenclature designed to help you find the specific cabinet type needed.
- For 24" depth cabinets, specify -24 after item #. For example URB OBF1501-24-LH.
- Right hinge or left hinge on single door units is specified as -RH or -LH.

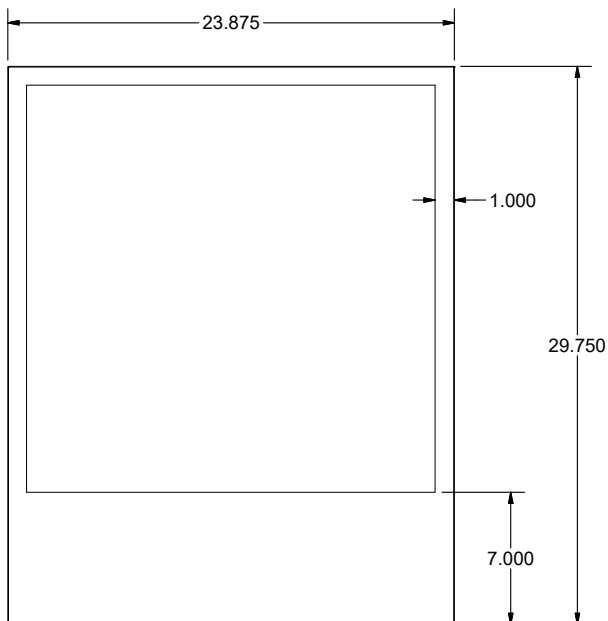
Base Cabinet part number nomenclature; example:						
URB OBF1801-RH: 18" Full Height Door Cabinet						
URB	OB	F	18	0	1	RH
Prefix	Base	Style	Width	Drawers	Doors	Hinge
Category *		Base Style **	Base Width in inches	Number of Drawers	Number of Doors	Left or Right Hand

* Base Category Code Key	
OB	Outside Base
OG	Outside Grill
OP	Outside Propane Pull-out
OW	Outside Warming

** Base Style Code Key	
B	Burner (or Base)
C	Cocktail Base
F	Full-height Door
M	Multi-Drawer
S	Sink
T	Trash
W	Warming Drawer

Urbane Door Powder Coat Options

[*Return to Table of Contents](#)



Urbane door specifications

Center panel is recessed by 1/32" (SS thickness)



Option 1: Powder coated Center, Stainless Frame

Center: Secondary Color, Frame: Stainless Steel

Trim kits ALWAYS match the center panel

Wood grain powder coat available on Center ONLY.



Option 2: Powder coated Center, Midnight Frame

Center: Secondary Color, Frame: Primary Color

Trim kits ALWAYS match the center panel

Wood grain powder coat available on Center ONLY.



Option 3: Powder coated Center, Plata 62 Frame

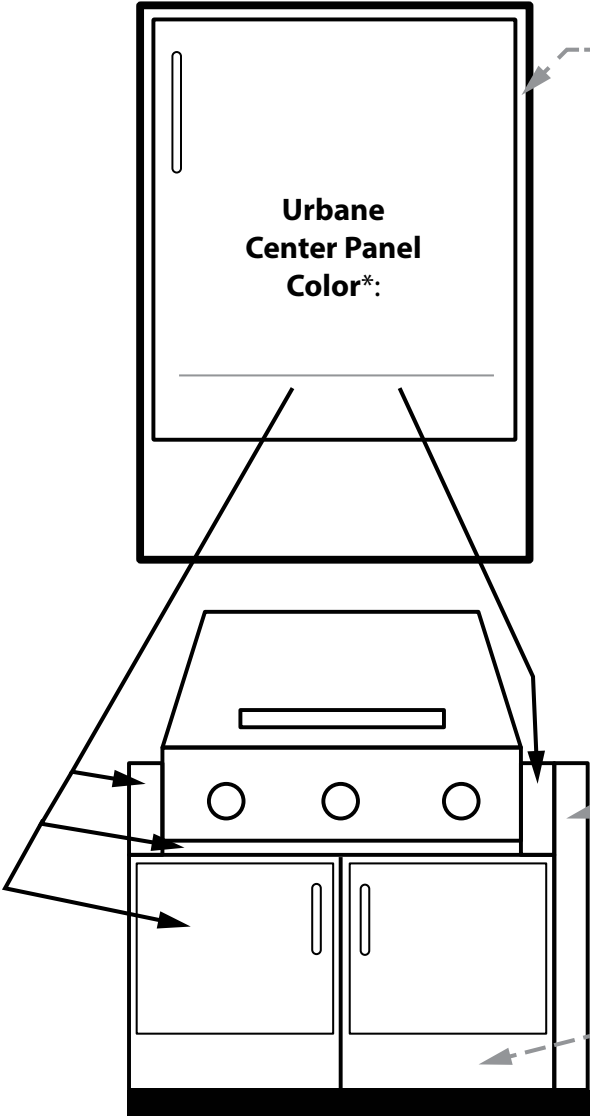
Center: Secondary Color. Frame: Plata 62

Trim kits ALWAYS match the center panel

Wood grain powder coat available on Center ONLY.

Urbane Powder Coat Selection Guide

[*Return to Table of Contents](#)



Urbane Frame Color*:
(Raw Stainless Steel, Midnight Matte or Plata 62):

Customer Name: _____

Quote or Order #: _____

PO or Project Name: _____

Printed Name: _____

Signature: _____

Date Approved: _____

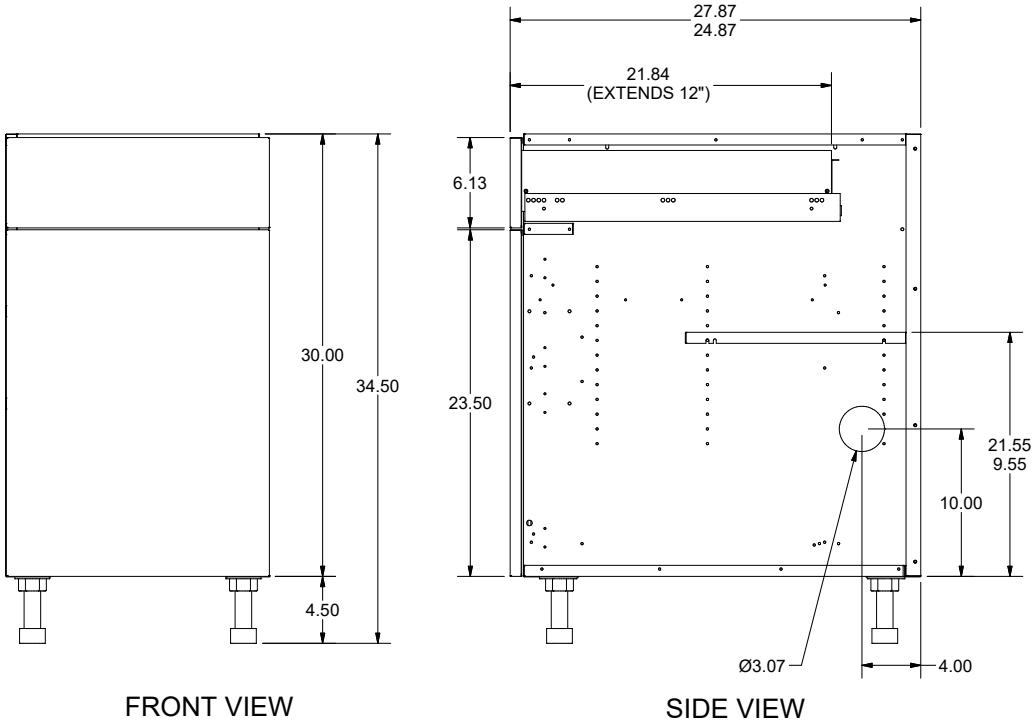
***NOTE: The Urbane Center Panel color selected will be applied to appliance trim kits.**

***NOTE: The Urbane Frame Color will be applied to any accessories** (side/back panels, fillers, etc).

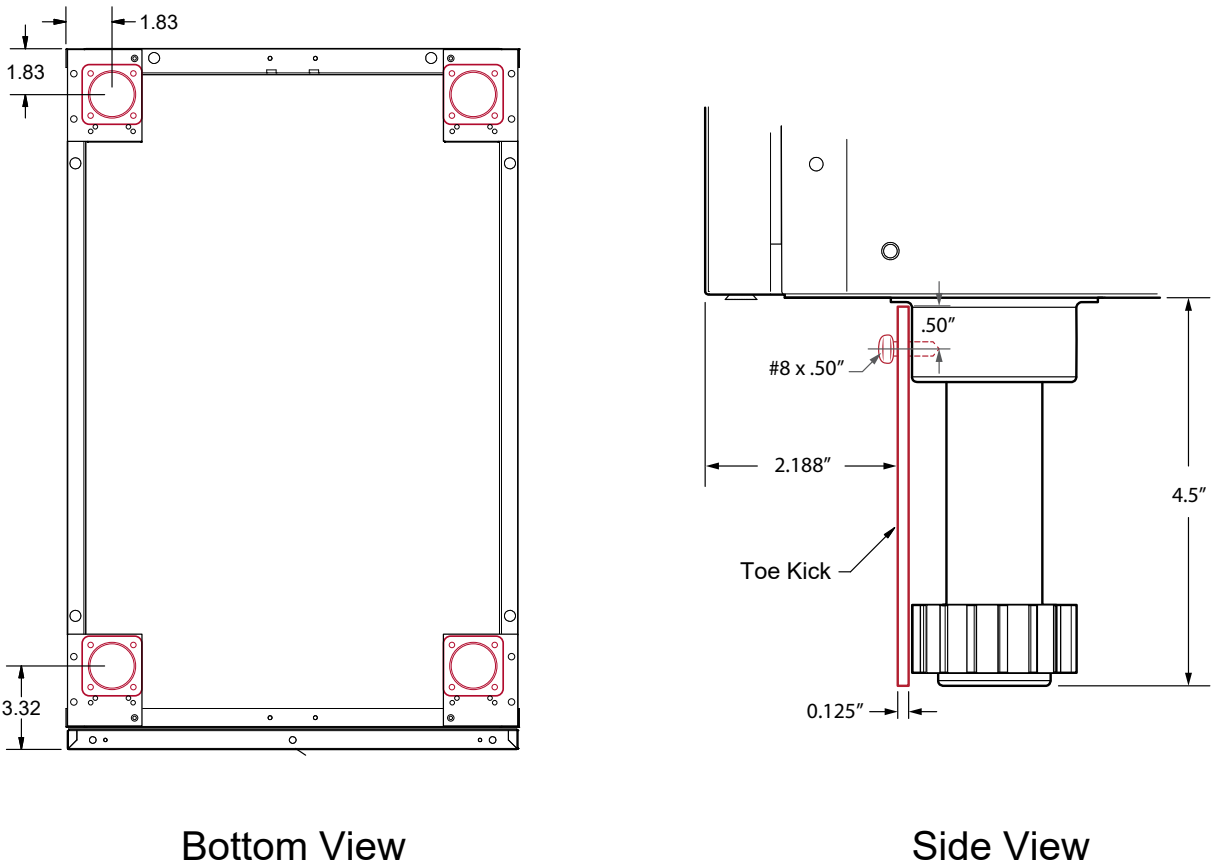
Storage Base Cabinets - Front, Side, & Bottom View

[*Return to Table of Contents](#)

Typical measurements for base storage cabinets.

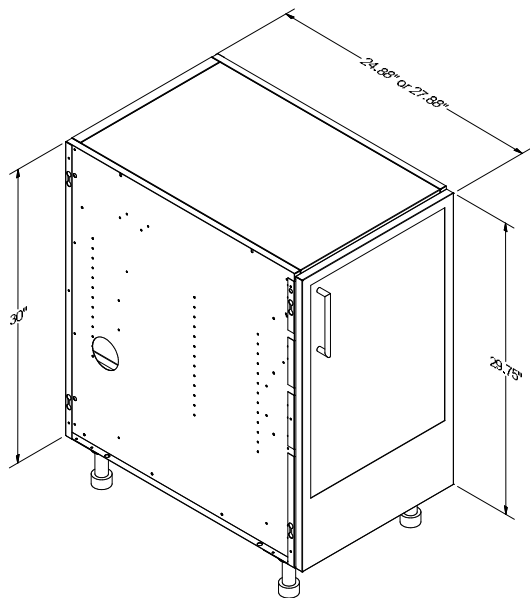


Typical cabinet foot location.

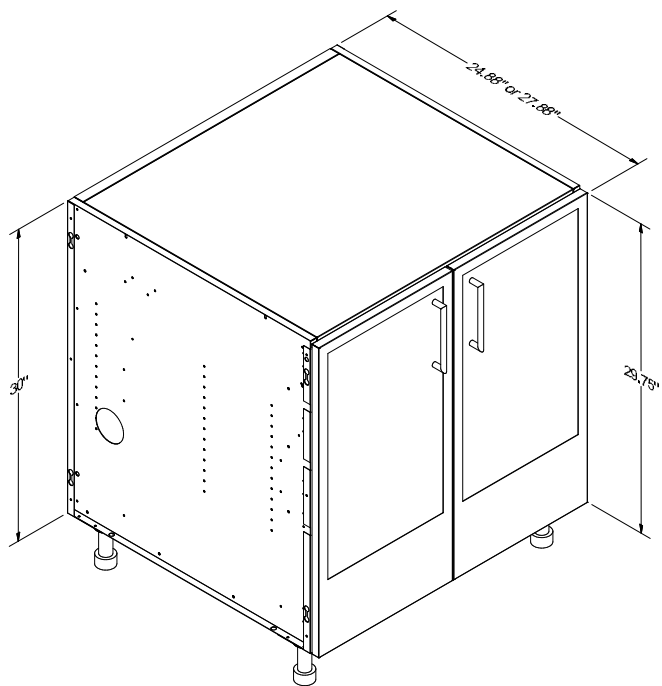


Storage Base Cabinets - Full-Height Doors: URB OBFxx01, xx02

[*Return to Table of Contents](#)



Product Description	
OBF: Full-height door base, 1 door, includes half-depth shelf.	
27" Depth SKU	24" Depth SKU
URB OBF1501-LH	URB OBF1501-24-LH
URB OBF1501-RH	URB OBF1501-24-RH
URB OBF1801-LH	URB OBF1801-24-LH
URB OBF1801-RH	URB OBF1801-24-RH
URB OBF2101-LH	URB OBF2101-24-LH
URB OBF2101-RH	URB OBF2101-24-RH

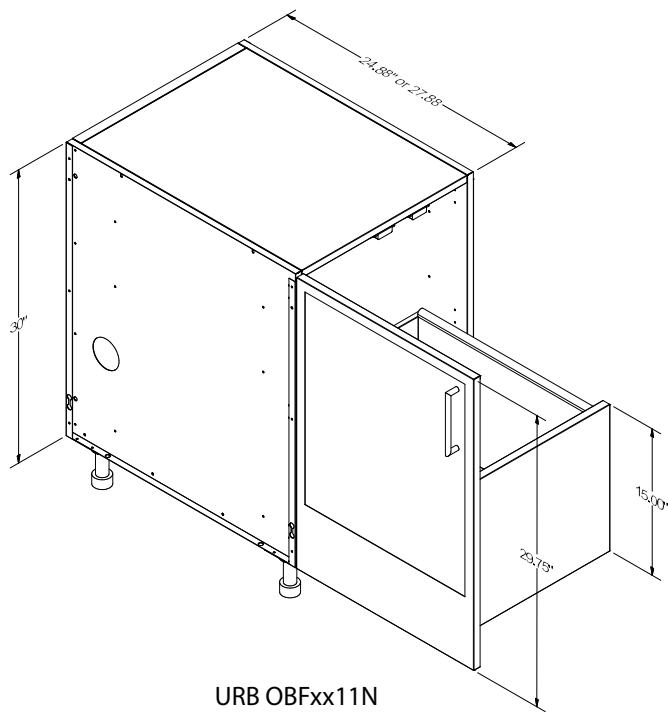


Product Description	
OBF: Full-height door base, 2 doors, includes half-depth shelf.	
27" Depth SKU	24" Depth SKU
URB OBF3002	URB OBF3002-24
URB OBF3602	URB OBF3602-24
URB OBF4202	URB OBF4202-24

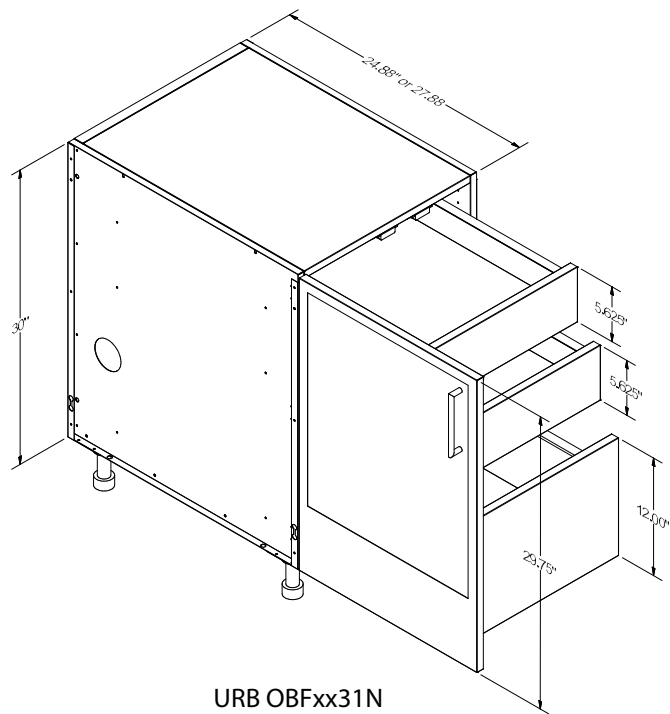
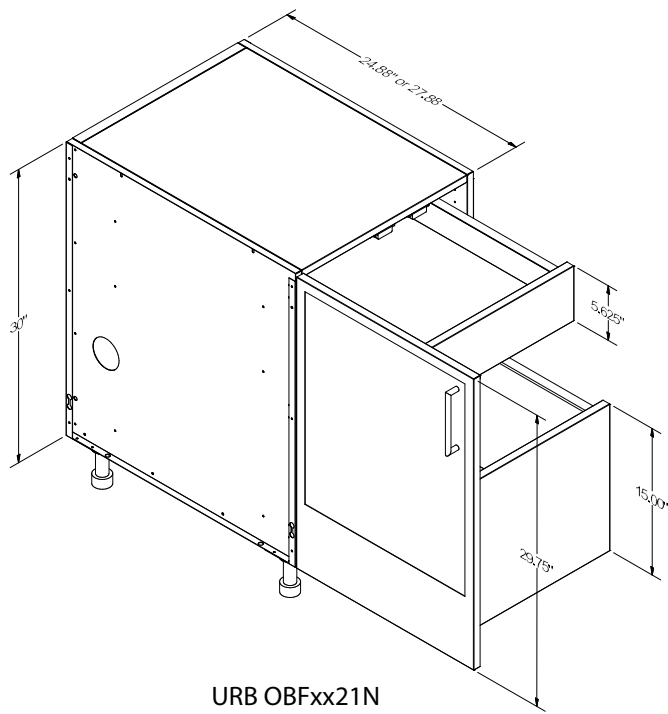
Note: Cabinet boxes are 30" high plus 4.5"leveling legs or 2"ADA-compliant leg heights.

Storage Base Cabinets - URB OBFxx11N, xx21N,xx31N

[*Return to Table of Contents](#)



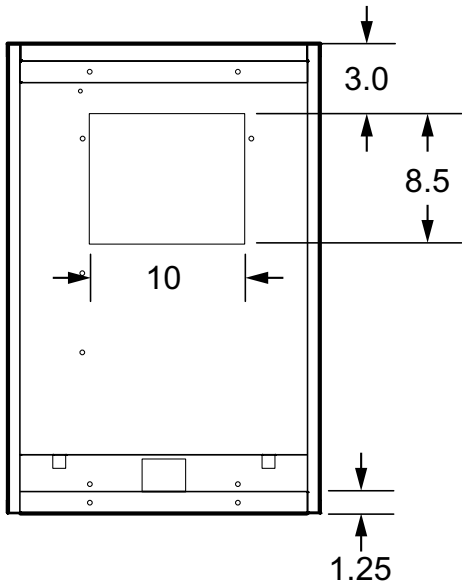
Product Description	
OBFxxxxN: 1 Full-Height door front attached to a large drawer.	
27" Depth SKU	24" Depth SKU
URB OBF1511N	URB OBF1511N-24
URB OBF1811N	URB OBF1811N-24
URB OBF2111N	URB OBF2111N-24
URB OBF1521N	URB OBF1521N-24
URB OBF1821N	URB OBF1821N-24
URB OBF2121N	URB OBF2121N-24
URB OBF1531N	URB OBF1531N-24
URB OBF1831N	URB OBF1831N-24
URB OBF2131N	URB OBF2131N-24



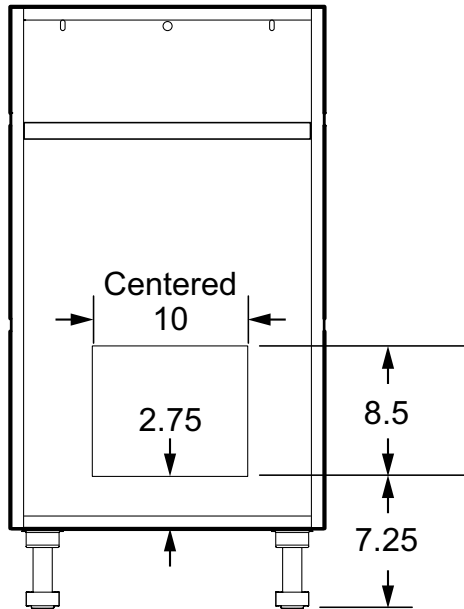
Sink Base Cabinets - URB OBSxxxx cutouts

[*Return to Table of Contents](#)

All OBS (Sink Base Cabinets) have pre-cut openings in the rear and bottom panels as well as standard side openings for plumbing and electrical conduit.



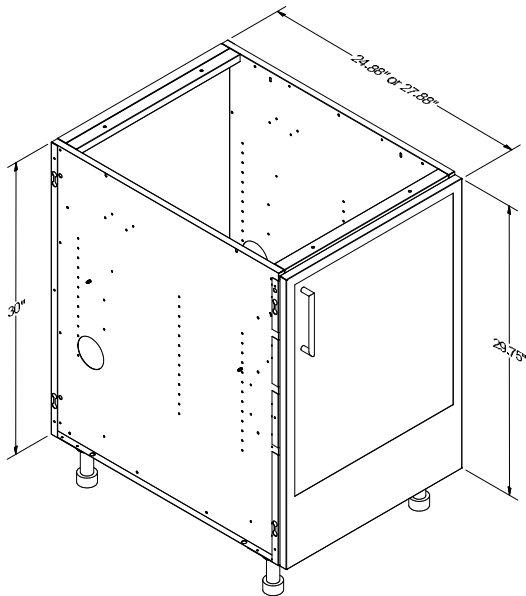
Top View



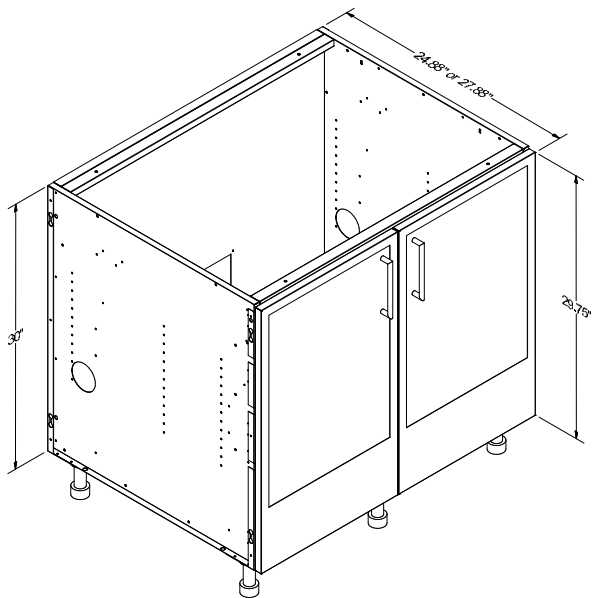
Front View

Sink Base Cabinets - Full-Height Door: URB OBSxxxx-FHD

[*Return to Table of Contents](#)



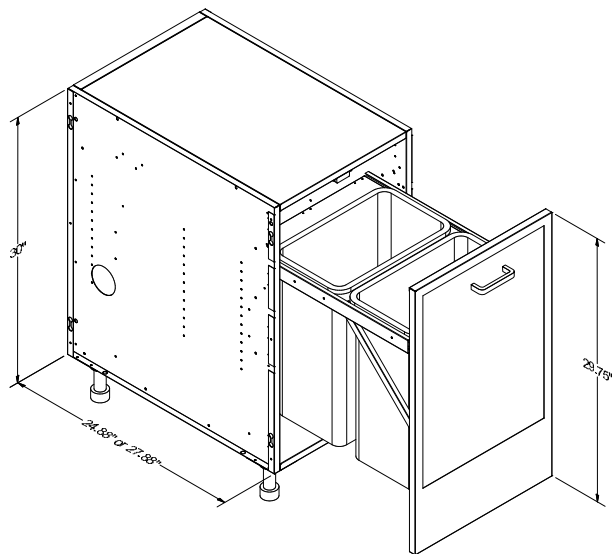
Product Description	
OBSxx01-FHD: Outdoor Sink Base, 1 Full-Height Door	
27" Depth SKU	24" Depth SKU
URB OBS1501-FHD-LH	URB OBS1501-24-FHD-LH
URB OBS1501-FHD-RH	URB OBS1501-24-FHD-RH
URB OBS1801-FHD-LH	URB OBS1801-24-FHD-LH
URB OBS1801-FHD-RH	URB OBS1801-24-FHD-RH
URB OBS2101-FHD-LH	URB OBS2101-24-FHD-LH
URB OBS2101-FHD-RH	URB OBS2101-24-FHD-RH



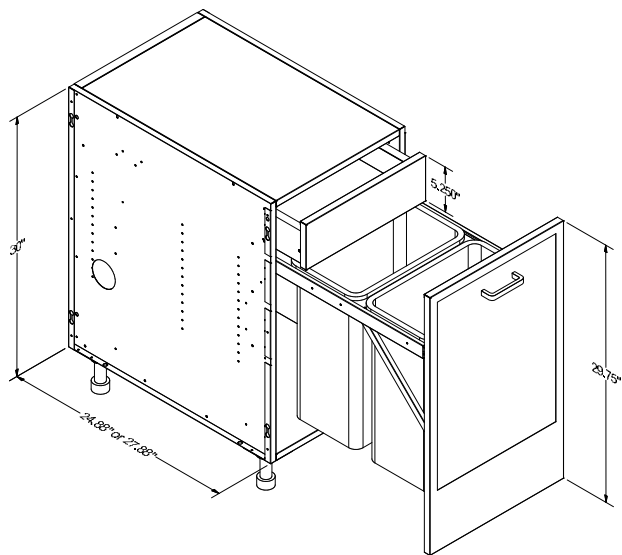
Product Description	
OBSxx02-FHD: Outdoor Sink Base, 2 Full-Height Doors	
27" Depth SKU	24" Depth SKU
URB OBS3002-FHD	URB OBS3002-24-FHD
URB OBS3602-FHD	URB OBS3602-24-FHD
URB OBS4202-FHD	URB OBS4202-24-FHD

Trash Base Cabinets - URB OBTxx00. Nested top drawer: xx10N

[*Return to Table of Contents](#)



Product Description	
OBTxx00: Outdoor Trash Base for 30 quart cans. 1 Full-Height Door. NOTE: 15" cabinets have 1 trash bin. Cabinets 18" and above have 2 trash bins.	
27" Depth SKU	24" Depth SKU
URB OBT1500	URB OBT1500-24
URB OBT1800	URB OBT1800-24
URB OBT2100	URB OBT2100-24



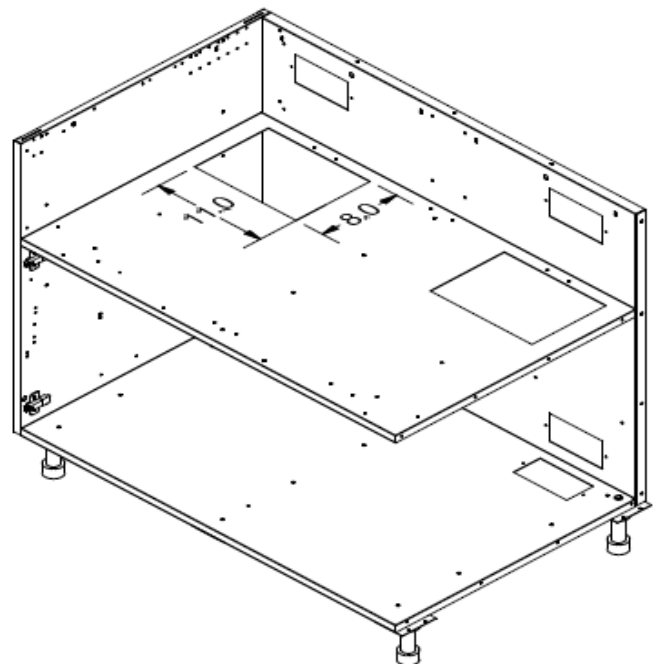
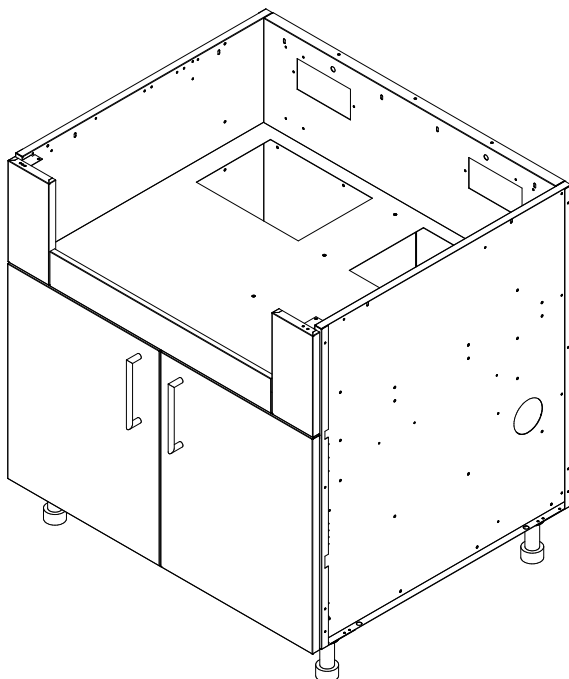
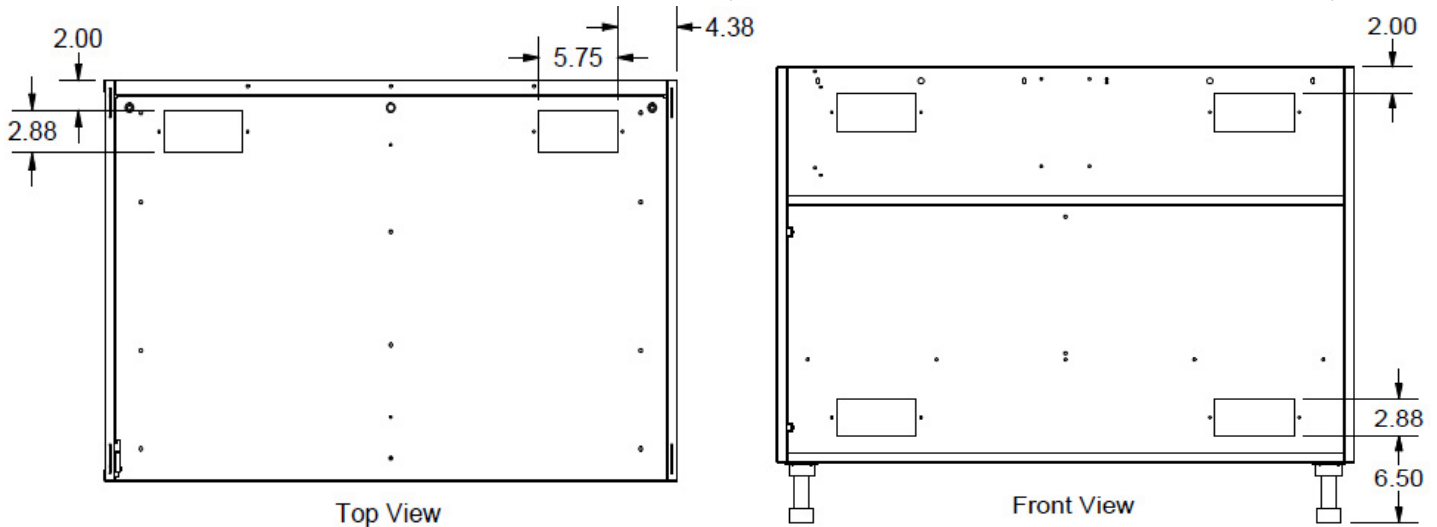
Product Description	
OBTxx10N: Outdoor Trash Base Nested Top Drawer for 30 quart cans. 1 Full-Height Door, 1 Hidden Drawer (Hampton front, no handle, pull underneath to open); Pull-out Trash attached to Door. NOTE: 15" cabinets have 1 trash bin. Cabinets 18" and above have 2 trash bins.	
27" Depth SKU	24" Depth SKU
URB OBT1510N	URB OBT1510N-24
URB OBT1810N	URB OBT1810N-24
URB OBT2110N	URB OBT2110N-24

Grill Cabinets - URB OGBxxxx

[*Return to Table of Contents](#)

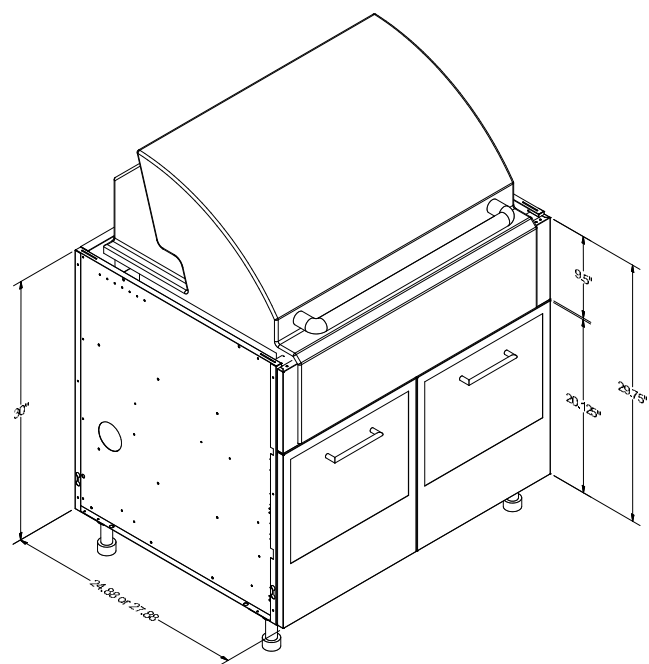
- Available in widths from 30" - 54".
- Factory installed trim kits individually designed to accommodate all grill manufacturers.
- Cabinets available for additional cooking appliances such as cooktops, EVO grills, and griddles.
- Specify cabinet 3-6" wider than the grill cutout (i.e. a 30"W cutout size requires a 33-36"W grill base).
- Some grills require a deeper cutout and shelf of 11"H. This is denoted with a "D" suffix. Example: OGB4802D.
- Other grills require an even deeper cutout and shelf set at 12.5"H. This is denoted with a "W" suffix. Example: OGB4802W. This shelf height is needed with a .75" countertop and a deep grill listed above.

*NOTE: Extra depth cabinets are not available in all sizes. Please contact: Sales@danver.com for specific needs.

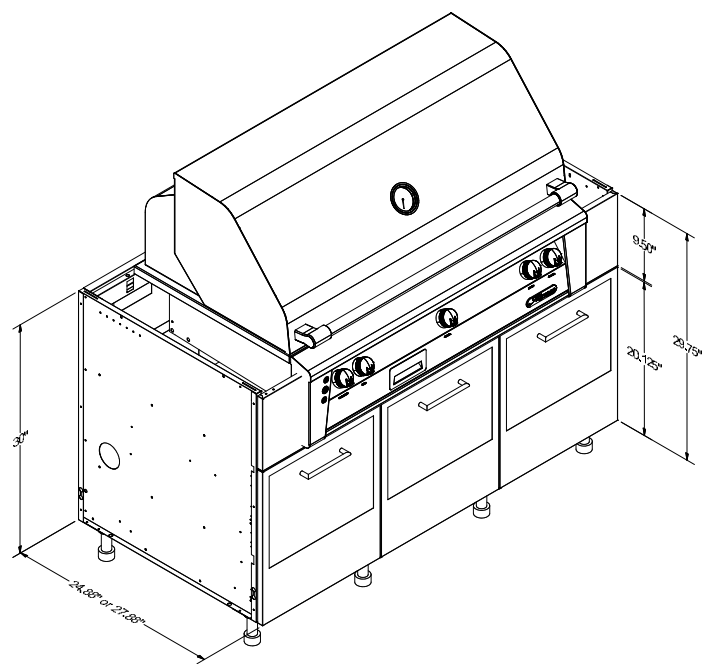


Grill Cabinets - Full-Height Drawers: URB OGBxx20, xx30

[* Return to Table of Contents](#)



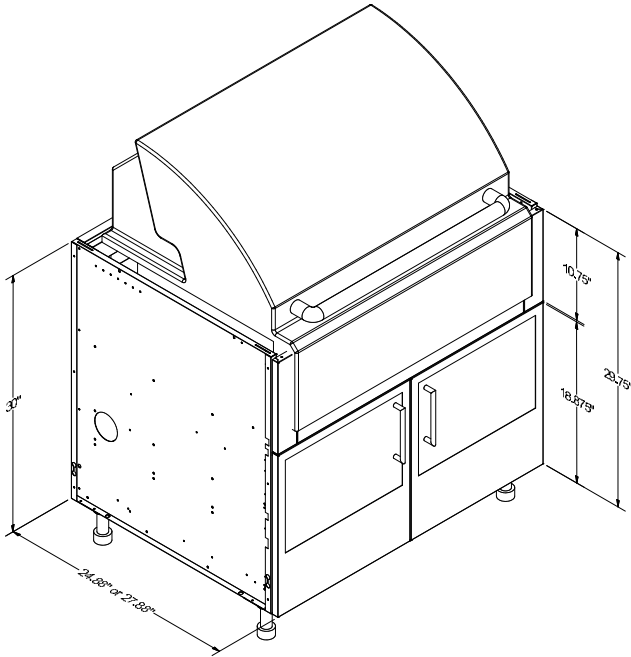
Product Description	
OGBxx20: Outdoor Grill Base, 2 Full-Height Drawers. 9.75"H grill shelf (9.5"H trim kit sides)	
27" Depth SKU	24" Depth SKU
URB OGB3020	URB OGB3020-24
URB OGB3620	URB OGB3620-24
URB OGB4220	URB OGB4220-24
URB OGB4820	URB OGB4820-24



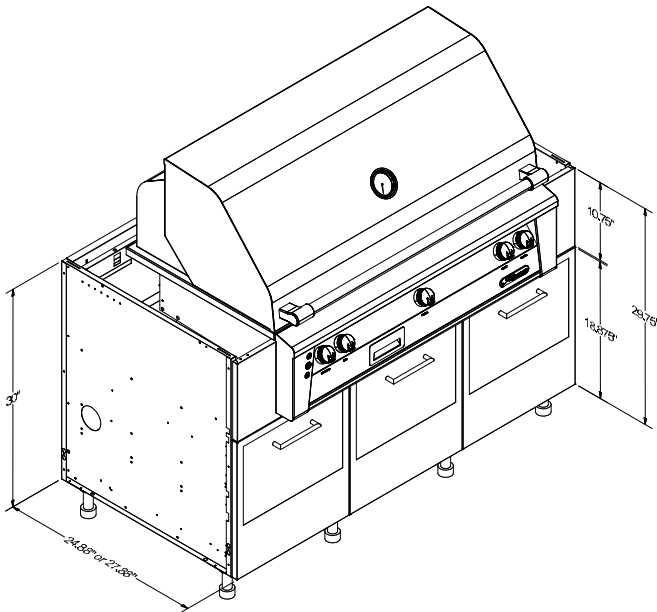
Product Description	
OGBxx30: Outdoor Grill Base, 3 Full-Height Drawers. 9.75"H grill shelf (9.5"H trim kit sides)	
27" Depth SKU	24" Depth SKU
URB OGB5430	URB OGB5430-24

Grill Cabinets - 11"H Shelf: URB OGBxx20H11, xx30H11

[*Return to Table of Contents](#)



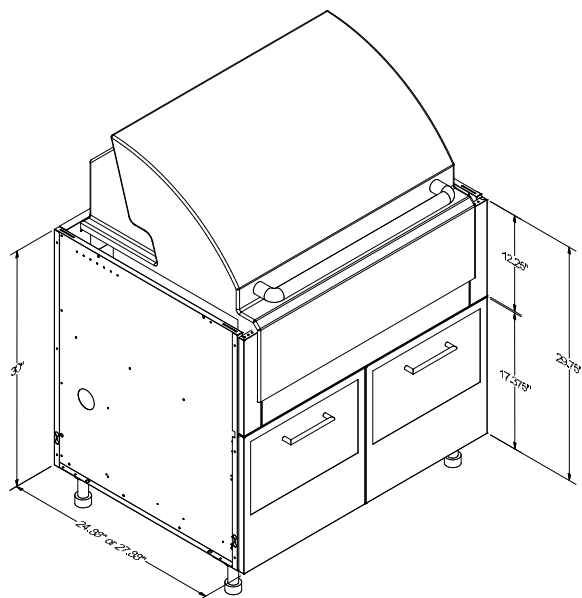
Product Description	
OGBxx20H11: Outdoor Grill Base, Deep, 2 Full-Height Drawers. 11"H grill shelf (10.75"H trim kit sides)	
27" Depth SKU	24" Depth SKU
URB OGB3020H11	URB OGB3020H11-24
URB OGB3620H11	URB OGB3620H11-24
URB OGB4220H11	URB OGB4220H11-24
URB OGB4820H11	URB OGB4820H11-24



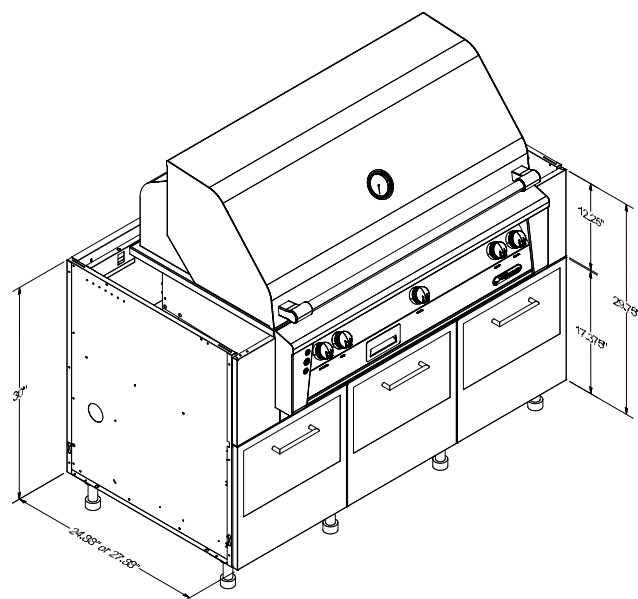
Product Description	
OGBxx30H11: Outdoor Grill Base, Deep, 3 Full-Height Drawers. 11"H grill shelf (10.75"H trim kit sides)	
27" Depth SKU	24" Depth SKU
URB OGB5430H11	URB OGB5430H11-24

Grill Cabinets - 12.5"H Shelf: URB OGBxx20H12.5, xx30H12.5

[*Return to Table of Contents](#)



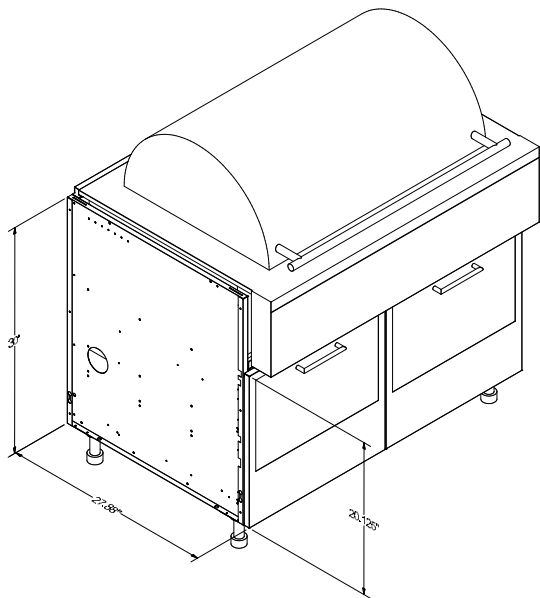
Product Description	
OGBxx20 H12.5: Outdoor Grill Base, 2 Drawers 12.5"H grill shelf (12.25"H trim kit sides)	
27" Depth SKU	24" Depth SKU
URB OGB3020H12.5	N/A
URB OGB3620H12.5	N/A
URB OGB4220H12.5	N/A
URB OGB4820H12.5	N/A



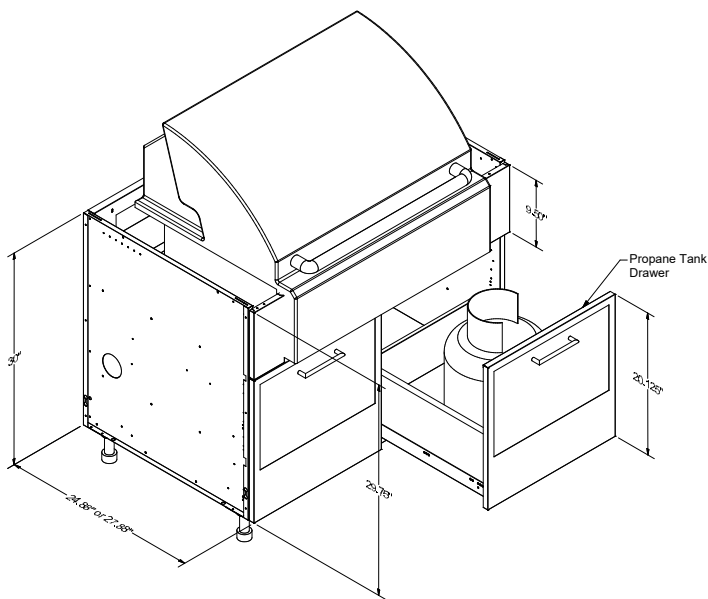
Product Description	
OGBxx30 H12.5: Outdoor Grill Base, 3 Drawers. 12.5"H grill shelf (12.25"H trim kit sides)	
27" Depth SKU	24" Depth SKU
URB OGB5430H12.5	N/A

Grill Cabinets - URB OGBxx20-CALIBER ROCKWELL, OGBxx20P

[*Return to Table of Contents](#)



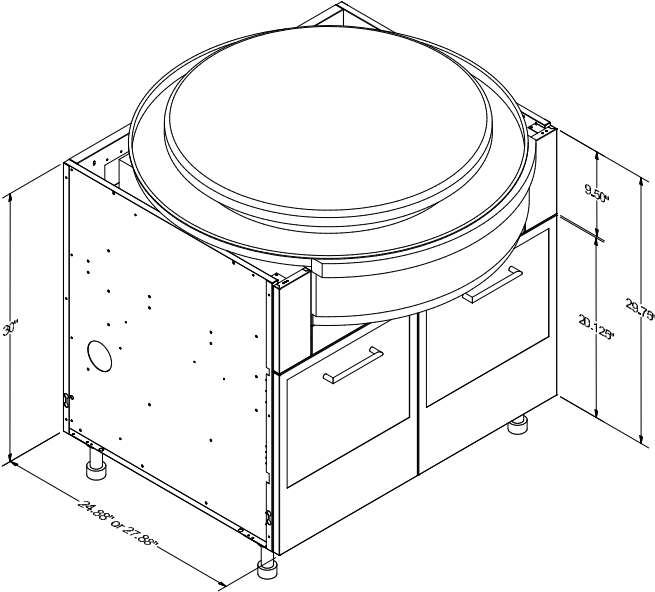
Product Description
OGBxx20-CALIBER ROCKWELL: Outdoor Grill Base, 2 Drawers, used ONLY for Caliber Rockwell grills of the same size, *NO TRIM KIT NEEDED! *this cabinet cannot be used on the end of a run, please call sales rep to discuss*
27" Depth SKU
URB OGB4220-CALIBER ROCKWELL
URB OGB4820-CALIBER ROCKWELL



Product Description	
OGBxx20P: Outdoor Grill Base, 2 Drawers, 1 side with Propane Pullout. 9.75"H grill shelf (9.5"H trim kit sides). Not available in other shelf heights.	
27" Depth SKU	24" Depth SKU
URB OGB3020P	URB OGB3020P-24
URB OGB3620P	URB OGB3620P-24
URB OGB4220P	URB OGB4220P-24
URB OGB4820P	URB OGB4820P-24

Grill Cabinets - URB OGBxx20-EVO

[*Return to Table of Contents](#)



Product Description	
OGBxx20-EVO: Outdoor Grill Base, 2 Drawers. 9.75"H grill shelf (9.5"H trim kit sides),*countertop thickness must be 1.25"H*	
27" Depth SKU	24" Depth SKU
URB OGB3020-EVO	N/A
URB OGB3620-EVO	N/A
URB OGB4220-EVO	N/A

Note: 25" EVO grills installed in 30" wide bases will overhang the cabinet front and back slightly. Please see images below for top view and additional specifications.

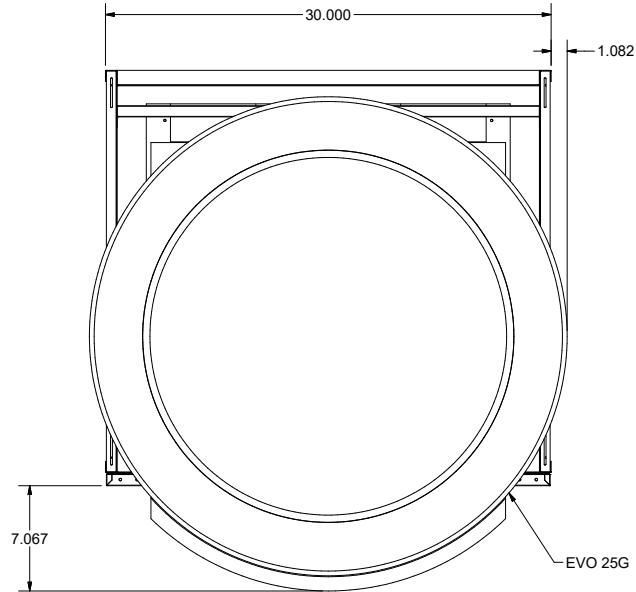


Image showing top view of EVO 25G installed in OGB3020-EVO overhang. The grill overhangs 1.08" on the sides.

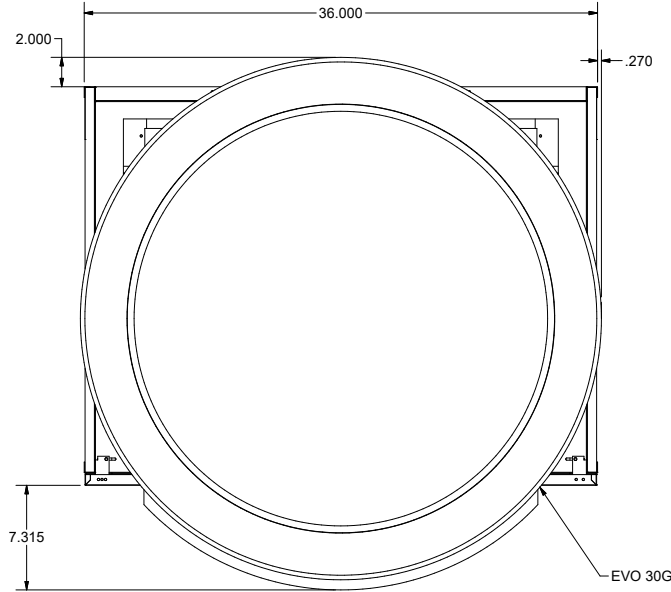


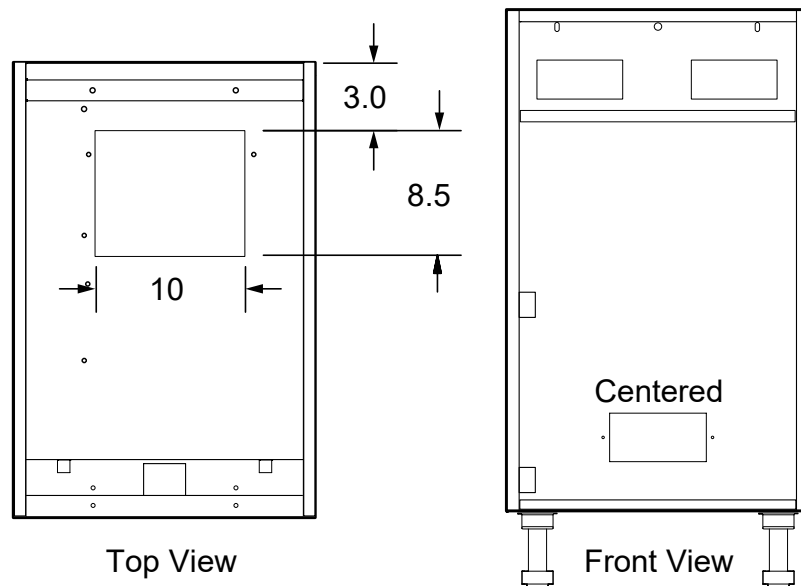
Image showing top view of EVO 30G installed in OGB3620-EVO overhang. The grill overhangs 2" in the back and .27" on the sides.

Side Burner Base Cabinets

[*Return to Table of Contents](#)

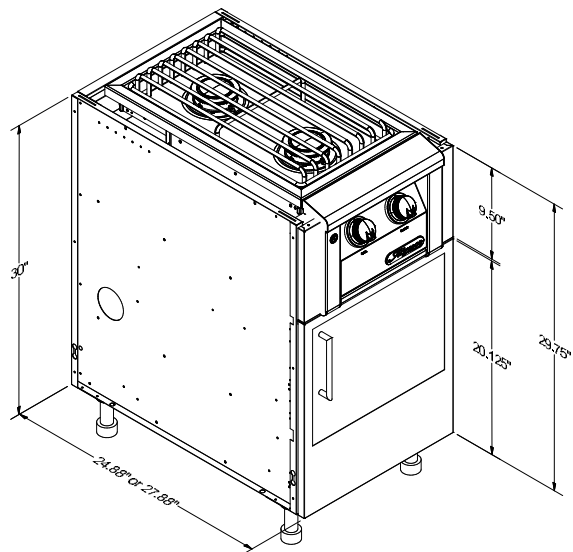
- Side Burner bases available in widths from 15" to 30".
- Specify Side Burner base 3-6" wider than the side or power burner cutout (i.e. a 15"W cutout size requires a 18-21"W Side Burner Base).
- Factory installed trim kits designed to accommodate all manufacturers.
- OBB appliance cabinetry accommodate all electrical, plumbing and gas necessities.

*NOTE: Extra depth cabinets are not available in all sizes. Please contact: Sales@danver.com for specific needs.

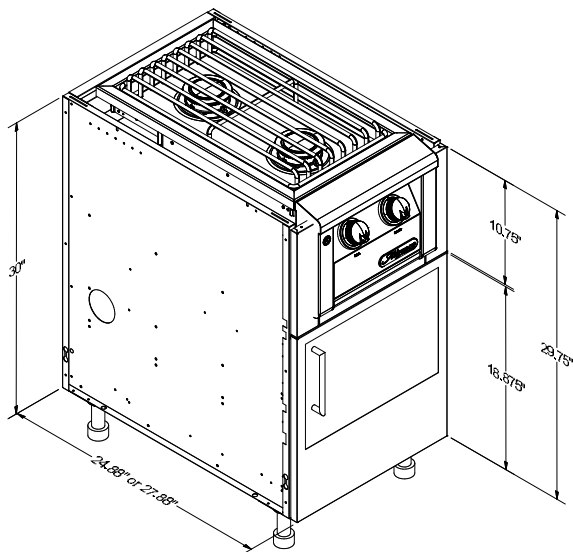


Side Burner Base - 1 Door: URB OBBxx01, xx01H11, xx01H12.5

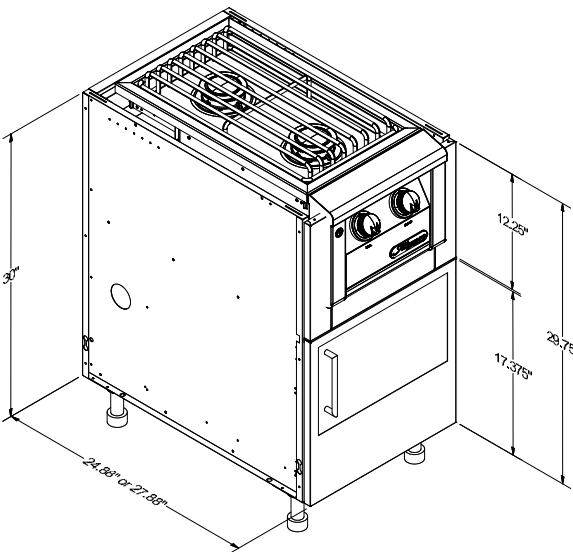
[*Return to Table of Contents](#)



Product Description	
OBBxx01:Outdoor Side Burner Base, 1 Door. 9.75"H burner shelf (9.5"H trim kit sides)	
27" Depth SKU	24" Depth SKU
URB OBB1501-LH	URB OBB1501-24-LH
URB OBB1501-RH	URB OBB1501-24-RH
URB OBB1801-LH	URB OBB1801-24-LH
URB OBB1801-RH	URB OBB1801-24-RH
URB OBB2101-LH	URB OBB2101-24-LH
URB OBB2101-RH	URB OBB2101-24-RH



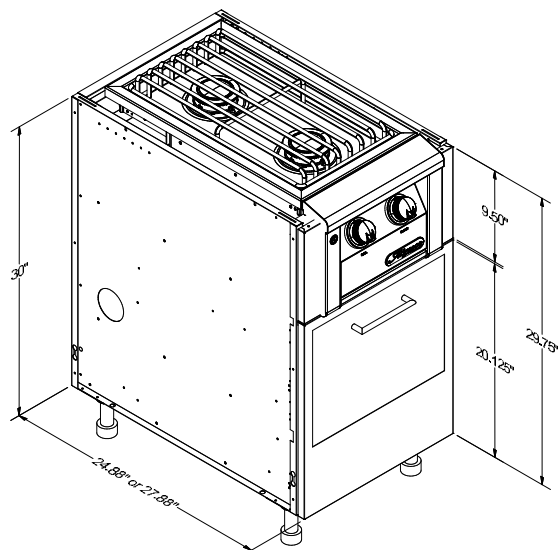
Product Description	
OBBxx01H11: Outdoor Side Burner Base, 1 Door. 11"H burner shelf (10.75"H trim kit sides)	
27" Depth SKU	24" Depth SKU
URB OBB1501H11-LH	URB OBB1501H11-24-LH
URB OBB1501H11-RH	URB OBB1501H11-24-RH
URB OBB1801H11-LH	URB OBB1801H11-24-LH
URB OBB1801H11-RH	URB OBB1801H11-24-RH
URB OBB2101H11-LH	URB OBB2101H11-24-LH
URB OBB2101H11-RH	URB OBB2101H11-24-RH



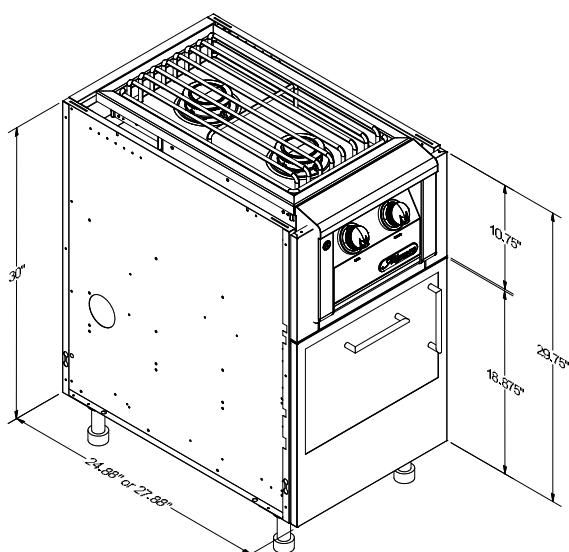
Product Description	
OBBxx01H12.5: Outdoor Side Burner Base, 1 Door. 12.5"H burner shelf (12.25"H trim kit sides)	
27" Depth SKU	24" Depth SKU
URB OBB1501H12.5-LH	N/A
URB OBB1501H12.5-RH	N/A
URB OBB1801H12.5-LH	N/A
URB OBB1801H12.5-RH	N/A
URB OBB2101H12.5-LH	N/A
URB OBB2101H12.5-RH	N/A

Side Burner Base - 1 Drawer: URB OBBxx10, xx10H11, xx10H12.5

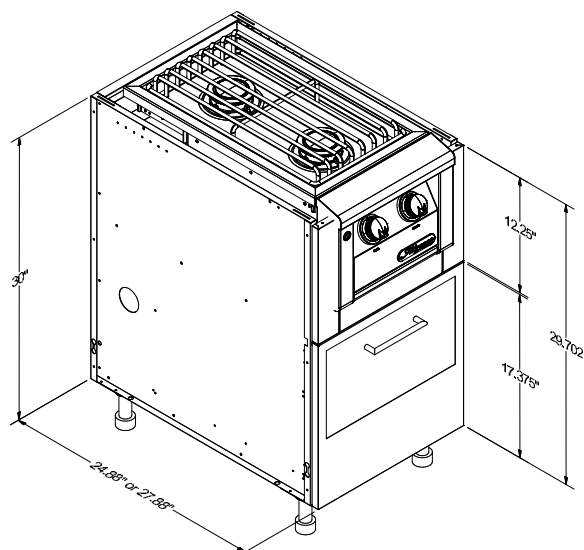
[*Return to Table of Contents](#)



Product Description	
OBBxx10:Outdoor Side Burner Base, 1 Drawer. 9.75"H burner shelf (9.5"H trim kit sides)	
27" Depth SKU	24" Depth SKU
URB OBB1510	URB OBB1510-24
URB OBB1810	URB OBB1810-24
URB OBB2110	URB OBB2110-24



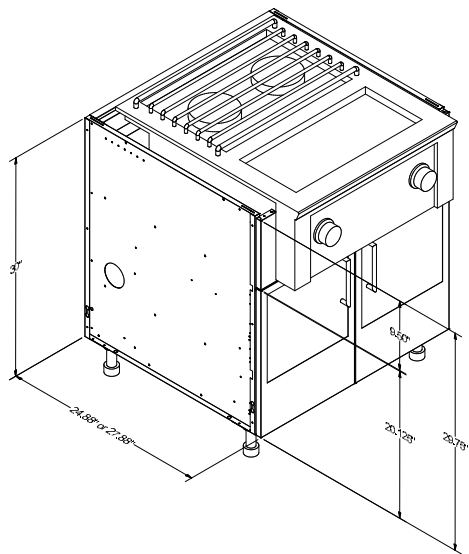
Product Description	
OBBxx10H11:Outdoor Side Burner Base, 1 Drawer. 11"H burner shelf (10.75"H trim kit sides)	
27" Depth SKU	24" Depth SKU
URB OBB1510H11	URB OBB1510H11-24
URB OBB1810H11	URB OBB1810H11-24
URB OBB2110H11	URB OBB2110H11-24



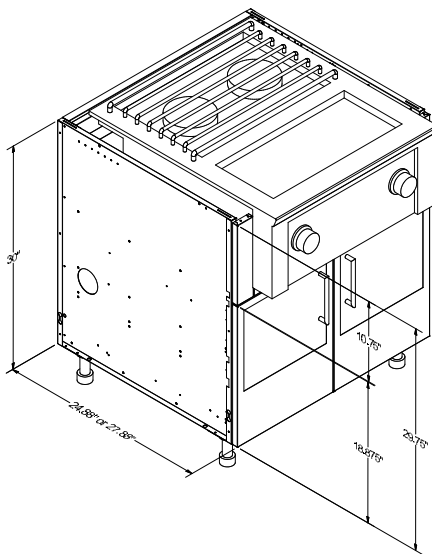
Product Description	
OBBxx10H12.5:Outdoor Side Burner Base, 1 Drawer. 12.5"H burner shelf (12.25"H trim kit sides)	
27" Depth SKU	24" Depth SKU
URB OBB1510H12.5	N/A
URB OBB1810H12.5	N/A
URB OBB2110H12.5	N/A

Side Burner Base - 2 Doors: URB OBBxx02, xx02H11, xx02H12.5

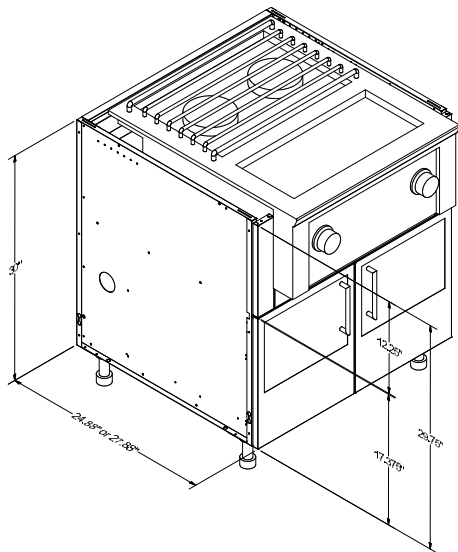
[* Return to Table of Contents](#)



Product Description	
OBBxx02:Outdoor Side Burner Base, 2 Doors. 9.75"H burner shelf (9.5"H trim kit sides)	
27" Depth SKU	24" Depth SKU
URB OBB3002	URB OBB3002-24



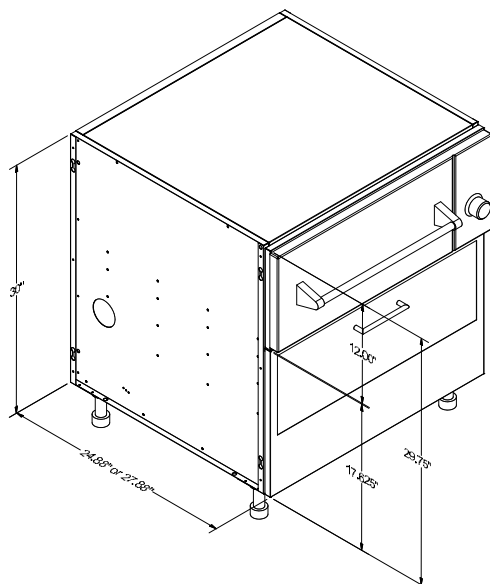
Product Description	
OBBxx02H11:Outdoor Side Burner Base, Deep, 2 Doors. 11"H burner shelf (10.75"H trim kit sides)	
27" Depth SKU	24" Depth SKU
URB OBB3002H11	URB OBB3002H11-24



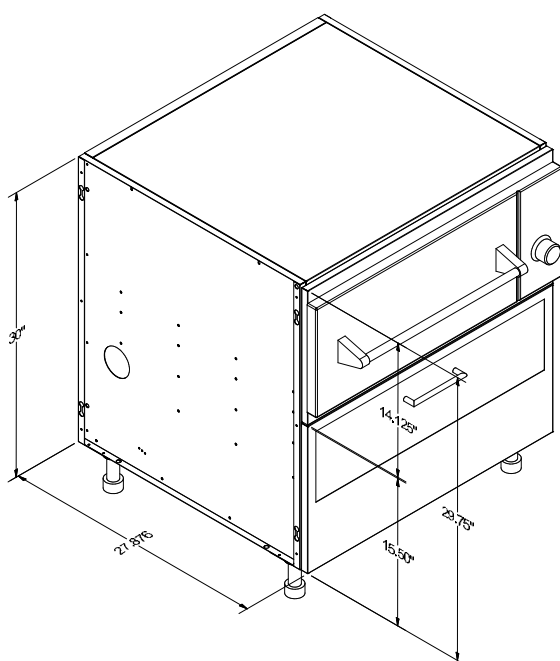
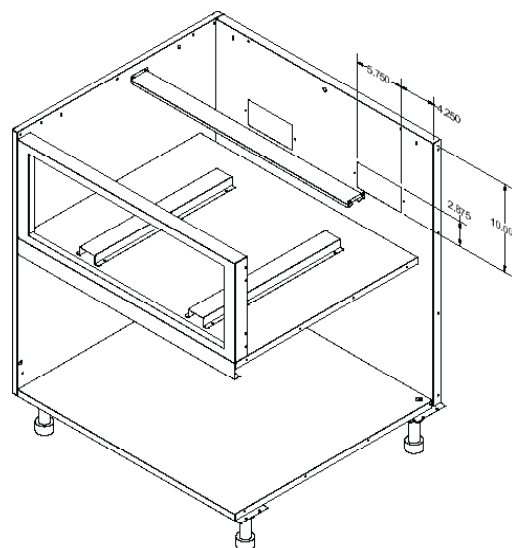
Product Description	
OBBxx02H12.5:Outdoor Side Burner Base, 2 Doors. 12.5"H burner shelf (12.25"H trim kit sides)	
27" Depth SKU	24" Depth SKU
URB OBB3002H12.5	N/A

Warming Drawer Bases - URB OBWxx10H12, OBWxx10H14.13

[*Return to Table of Contents](#)



Product Description	
OBWxx10: Outdoor Warming Drawer/Microwave Base, 1 Drawer. Shelf 12" from top.	
27" Depth SKU	24" Depth SKU
URB OBW3010H12	URB OBW3010H12-24
URB OBW3610H12	URB OBW3610H12-24



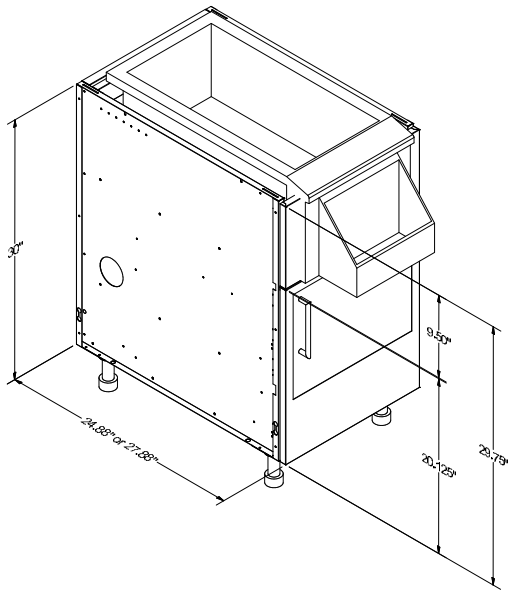
Product Description	
OBWxx10 H14.13: Outdoor Warming Drawer/Microwave Base, Deep, 1 Drawer. Shelf 14.13" from top.	
27" Depth SKU	24" Depth SKU
URB OBW3010H14.13	URB OBW3010H14.13-24
URB OBW3610H14.13	URB OBW3610H14.13-24

Note: OBW30xx's are made for 27" wide warming drawers.

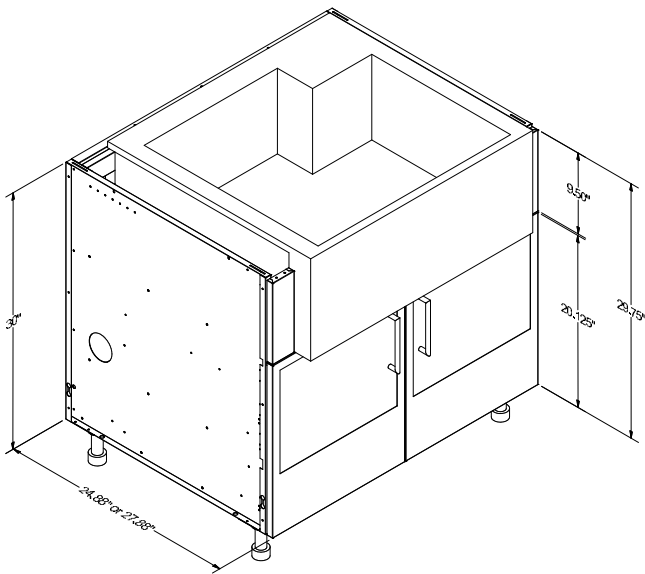
OBW36xx's accomodate 33" wide warming drawers.

Bartending Center Cabinets - 1 Door: URB OBCxx01. 2 Doors: xx02

[* Return to Table of Contents](#)



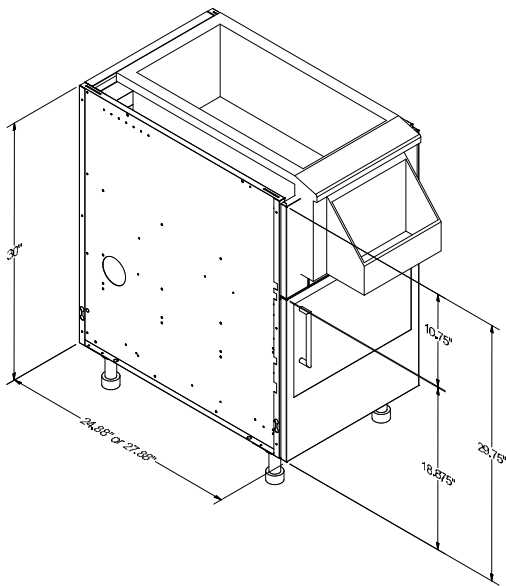
Product Description	
OBCxx01:Outdoor Bartending Center Base, 1 Door. 9.75"H appliance shelf (9.5"H trim kit sides)	
27" Depth SKU	24" Depth SKU
URB OBC1501-LH	URB OBC1501-24-LH
URB OBC1501-RH	URB OBC1501-24-RH
URB OBC1801-LH	URB OBC1801-24-LH
URB OBC1801-RH	URB OBC1801-24-RH
URB OBC2101-LH	URB OBC2101-24-LH
URB OBC2101-RH	URB OBC2101-24-RH



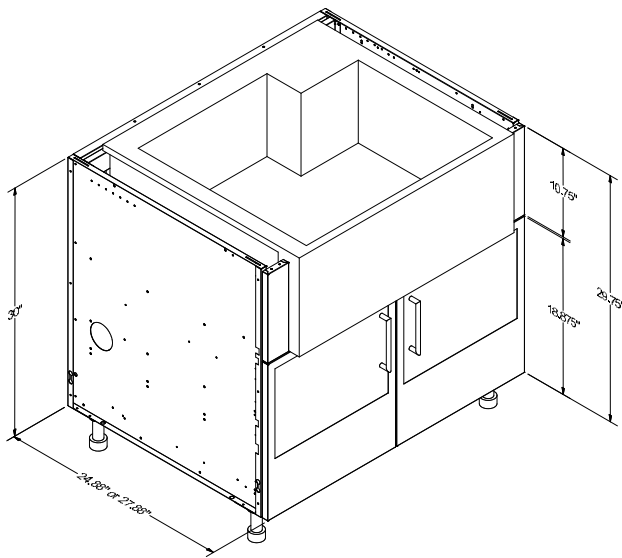
Product Description	
OBCxx02:Outdoor Bartending Center Base, Deep, 2 Doors. 9.75"H appliance shelf (9.5"H trim kit sides)	
27" Depth SKU	24" Depth SKU
URB OBC3002	URB OBC3002-24
URB OBC3602	URB OBC3602-24

Bartending Center Cabinets - URB OBCxx01H11, xx02H11

[*Return to Table of Contents](#)



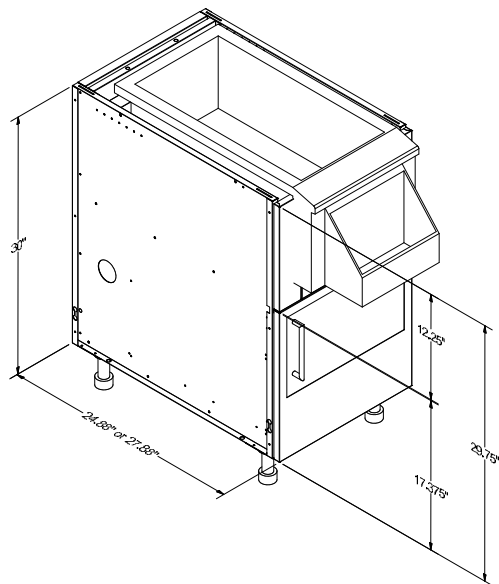
Product Description	
OBCxx01H11:Outdoor Bartending Center Base, Deep, 1 Door. 11"H appliance shelf (10.75"H trim kit sides)	
27" Depth SKU	24" Depth SKU
URB OBC1501H11-LH	URB OBC1501H11-24-LH
URB OBC1501H11-RH	URB OBC1501H11-24-RH
URB OBC1801H11-LH	URB OBC1801H11-24-LH
URB OBC1801H11-RH	URB OBC1801H11-24-RH
URB OBC2101H11-LH	URB OBC2101H11-24-LH
URB OBC2101H11-RH	URB OBC2101H11-24-RH



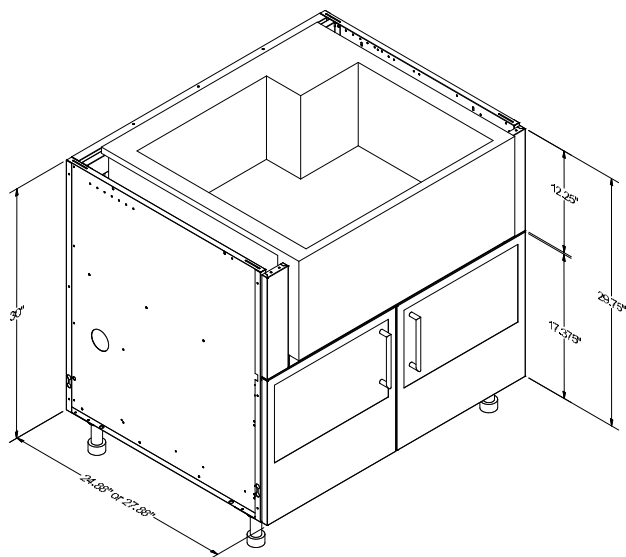
Product Description	
OBCxx02H11:Outdoor Bartending Center Base, 2 Doors. 11"H appliance shelf (10.75"H trim kit sides)	
27" Depth SKU	24" Depth SKU
URB OBC3002H11	URB OBC3002H11-24
URB OBC3602H11	URB OBC3602H11-24

Bartending Center Cabinets - URB OBCxx01H12.5, xx02H12.5

[* Return to Table of Contents](#)



Product Description	
OBCxx01 H12.5:Outdoor Bartending Center Base, Deep, 1 Door. 12.5"H appliance shelf (12.25"H trim kit sides)	
27" Depth SKU	24" Depth SKU
URB OBC1501H12.5-LH	N/A
URB OBC1501H12.5-RH	N/A
URB OBC1801H12.5-LH	N/A
URB OBC1801H12.5-LH	N/A
URB OBC2101H12.5-LH	N/A
URB OBC2101H12.5-RH	N/A



Product Description	
OBCxx02H12.5 :Outdoor Bartending Center Base, 2 Doors. 12.5"H appliance shelf (12.25"H trim kit sides)	
27" Depth SKU	24" Depth SKU
URB OBC3002H12.5	N/A
URB OBC3602H12.5	N/A

Cabinet Accessories: Nomenclature

[*Return to Table of Contents](#)

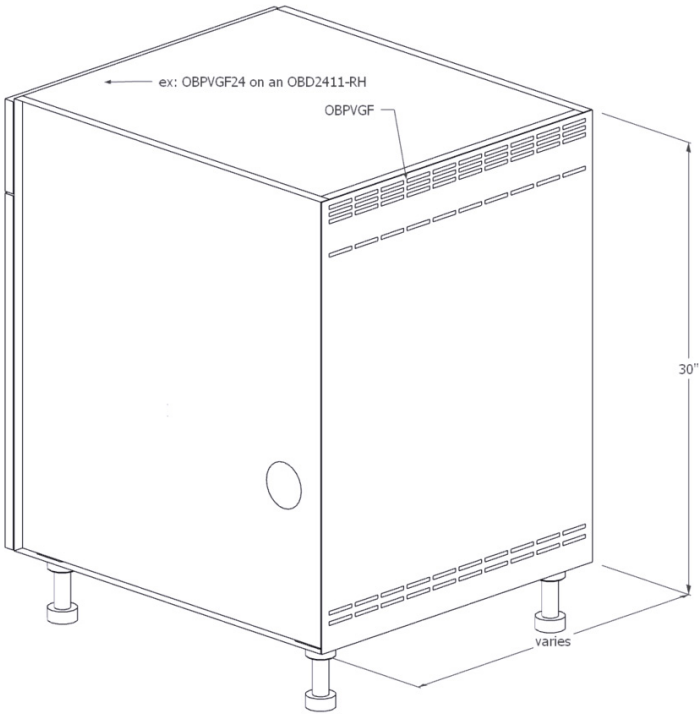
All Danver Accessories use nomenclature designed to help you find the desired part.

Cabinet Accessory nomenclature example:						
URB OSP 27.88L: Left Side Panel 27.88" wide x 30"H, 3/4" thick (exact width of 27" cabinets).						
URB	O	SP	27.88	L	or	*Part specific suffix*
Prefix	Outside	Style	Width	Side	Denotes vents, pullout shelf, etc.	

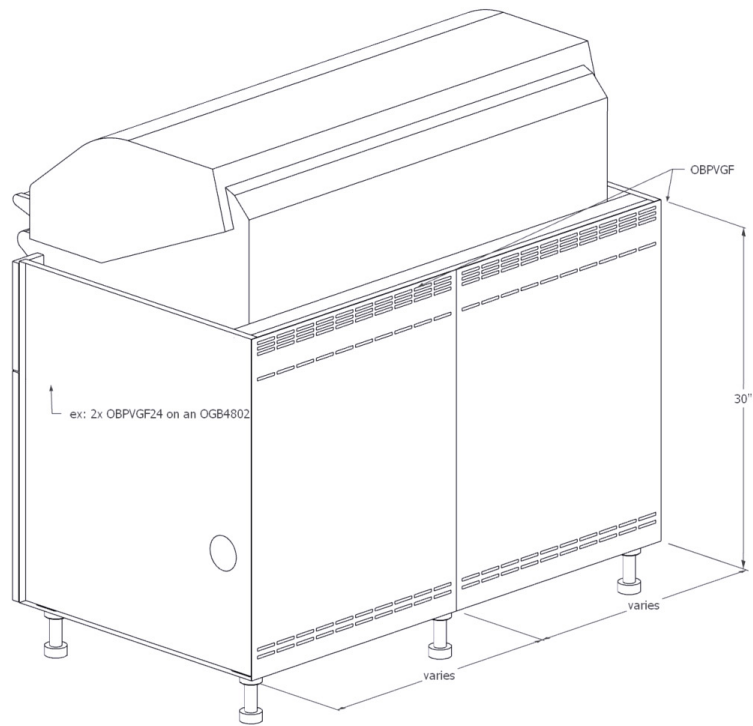
Part Name	Description	Part Usage Summary
OAF90 xx	Angled Front Filler 90 degrees	Front corner filler to attach two sides of L-shaped run
OAR90 xx	Angled Rear Filler 90 degrees	Rear corner filler with post, fills void and provides countertop support
OBPVGFxx	Back Panel Vented Galvanized	Applied to cabinet back as attachment point for Equal Back Panels
OBPVxx	Back Panel Vented	Finishes back of appliance cabinet, .75" depth
OBPxx	Back Panel (Non-vented)	Finishes back of non-appliance cabinet, .75" depth
OBX	Box Column	Used between two undercounter appliances as countertop support
OBXF	Box Column Filler	Skin that connects over front and back of OBX to increase width
OFExxL	Flush End Left	Applied to cabinet next to undercounter appliance or to end run
OFL	Filler Rear	Used between two cabinets to fill rear space, .75" minimum
OFLF	Filler Front	Used between two cabinets to fill front space, .75" minimum
OFLFxx END	Filler Front End	Used to end run: one side attaches to cabinet, other to wall
OPP	Propane Pullout Shelf	Used in opening under door appliance base to hold propane tank
URB EQUAL BP	Urbane Equal Back Panel	Used to finish backs of cabinets with even seam spacing.
URB ORP	Refrigerator Box Column	Ends run and supports countertop next to undercounter appliance
ORPS	Refrigerator Panel Skin	Connects over an ORP to increase depth
ORS	Refrigerator Spacer	Spacer for undercounter appliance, pick size .25" larger than cutout
OSHxx	Half-Depth Shelf	Additional shelf for standard bases, 15" deep
OSHxxP	Pullout Shelf	Used under door side of appliance base for easy access storage
OSHxxxx	Full-Depth Shelf	Additional shelf for standard bases, 24" or 27" deep
URB OSPxxL	Side Panel Urbane Door Left	Decorative panels to match any door front style
OTKx	Toe Kick	Black composite material to cover legs: 2", 4.38", and 6" heights

Cabinet Accessories - Galvanized Vented Back Panels: OBPVGF

[*Return to Table of Contents](#)

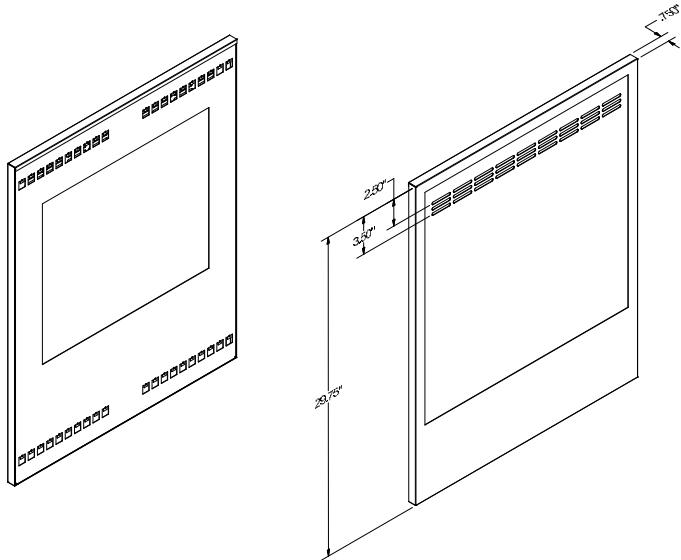


Product Description	
OBPVGF: Base cabinet galvanized flush back panel. Sits flush in cabinet back, used to fill in cabinet back for adhering waterfall countertops and other materials. used in conjunction with Equal Back Panels. Fits exact width of cabinet up to 39"W, wider cabinets use two smaller back panels.	
SKU	Description
OBPVGF15	Galvanized 15" filler back panel
OBPVGF18	Galvanized 18" filler back panel. Order 1 for an 18" side burner or 2 for a 36" grill cabinet.
OBPVGF21	Galvanized 21" filler back panel. Order 1 for an 21" side burner or 2 for a 42" grill cabinet.
OBPVGF24	Galvanized 24" filler back panel. Order 2 for a 48" grill cabinet.
OBPVGF36	Galvanized 36" filler back panel

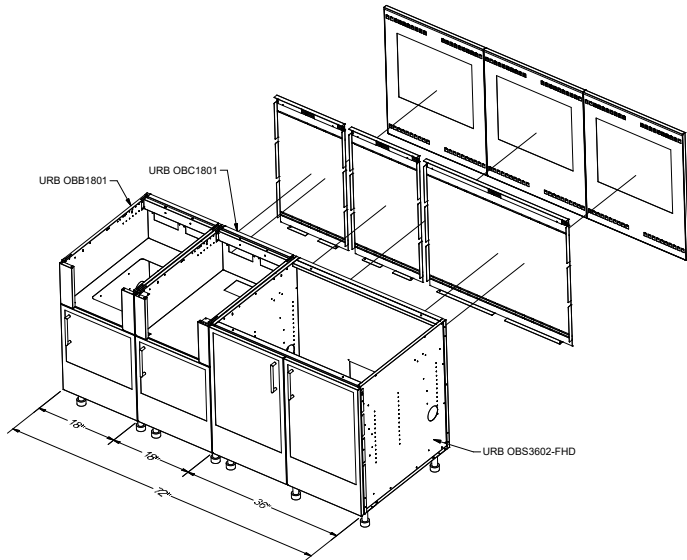
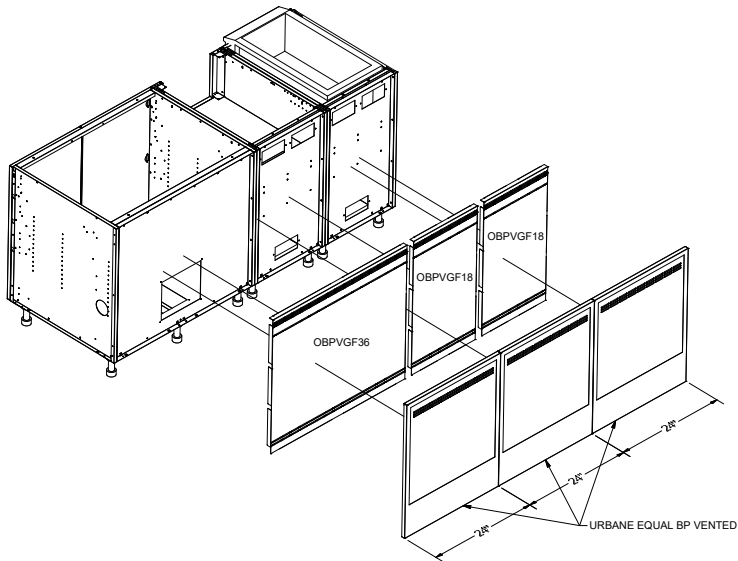


Cabinet Accessories - Urbane Equal Back Panels

[*Return to Table of Contents](#)

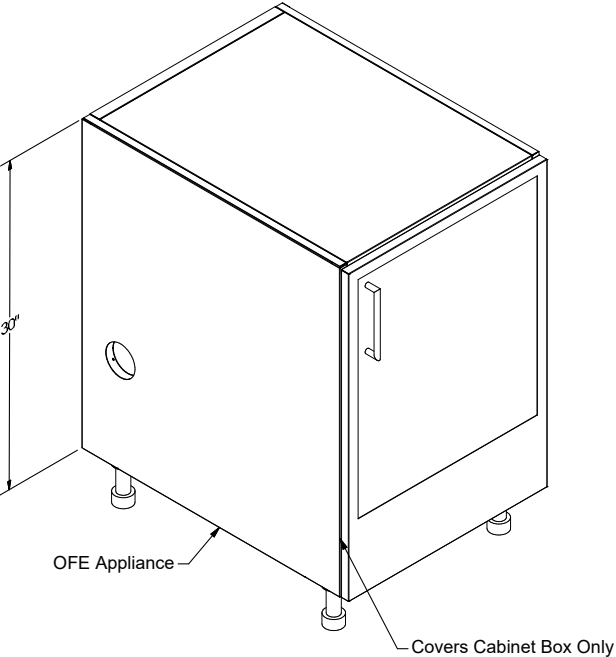


Product Description		
<p>URB EQUAL BP: 3/4" Thick back panels for base cabinets made to match Urbane door style. Widths 24"W – 36"W, custom made to equally span across a run. Must be ordered with OBPVGF galvanized filler back panels on corresponding cabinets for proper installation. Vented or non-vented depending on if they are installed on appliance cabinets (side burner bases, grill bases) that require air flow.</p> <p>Notes: When used with OSP finished side panels, choose the depth of the cabinet with back panels (ex: OSP 28.63 for 27.88"D cabinets). When using Equal Back Panels with an OAR corner setup, one side will overhang by .75" to meet up with the equal panels on the other side.</p>		
SKU		
Door Style	Non-vented	Vented
Urbane	URB EQUAL BP	URB EQUAL BP VENTED

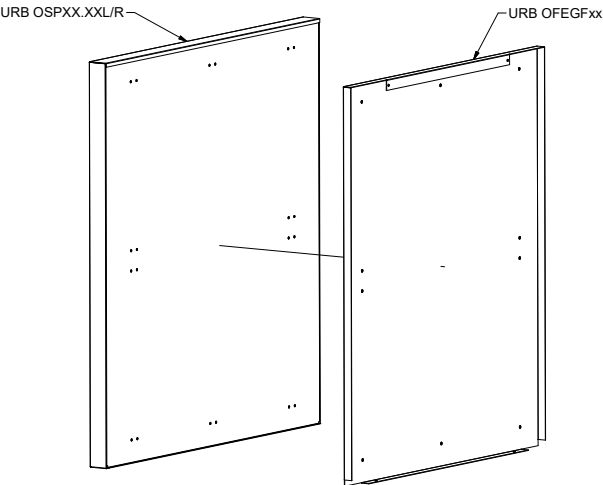


Cabinet Accessories - Flush End Panels: OFE xxL/R, URB OFEGFxx

[*Return to Table of Contents](#)



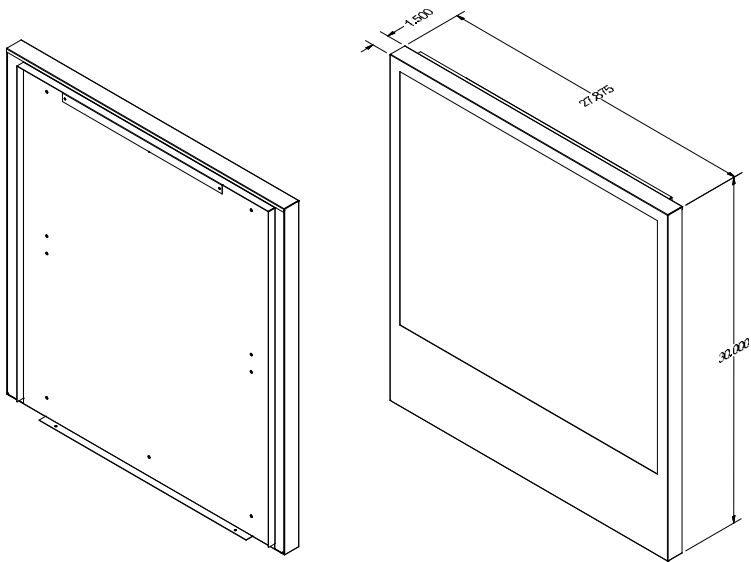
Product Description	
OFE APPLIANCE: Base cabinet flush side panel. Sits flush to cabinet side, has round knockout access hole for plumbing/electrical in rear of panel, used to finish a cabinet side adjacent to an undercounter appliance. Specify based on cabinet side and depth.	
27" Depth SKU	24" Depth SKU
OFE 27L APPLIANCE	OFE 24L APPLIANCE
OFE 27R APPLIANCE	OFE 24R APPLIANCE



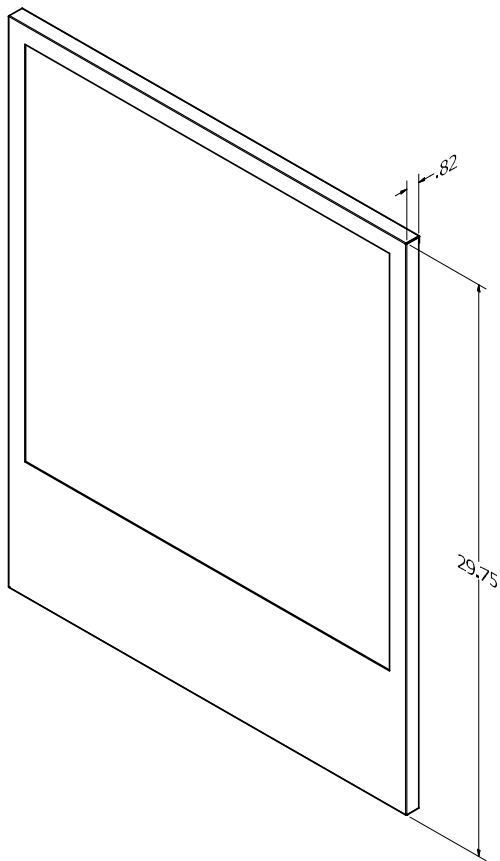
Product Description	
URB OFEGF: URBANE Galvanized filler panel - fits INSIDE the side of a 24" deep base cabinet and *REQUIRED* to attach URB OSP. Used interchangeably on Left/Right (based on side panel).	
27" Depth SKU	24" Depth SKU
URB OFEGF27	URB OFEGF24

Cabinet Accessories - Side Panels: URB OSPxxL/R, Overlay Panels

[*Return to Table of Contents](#)



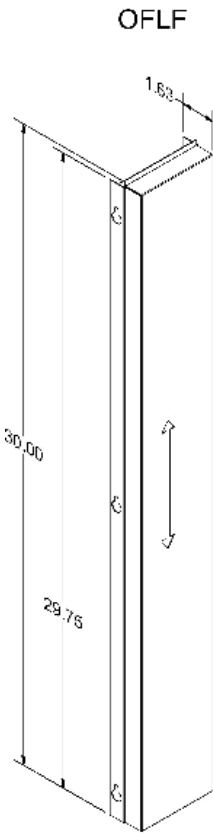
Product Description	
OSP: 1.5" thick side panels for base cabinets. Panels sit flush with door/drawer faces and back panels if used. Specify based on cabinet side and depth (select .75" deeper for use with back panels).	
24" Depth SKU	
URB OSP 24.88L	
URB OSP 24.88R	
URB OSP 25.63L	24"D Cabinet with Equal Back Panel
URB OSP 25.63R	24"D Cabinet with Equal Back Panel
27" Depth SKU	
URB OSP 27.88L	
URB OSP 27.88R	
URB OSP 28.63L	27"D Cabinet with Equal Back Panel
URB OSP 28.63R	27"D Cabinet with Equal Back Panel



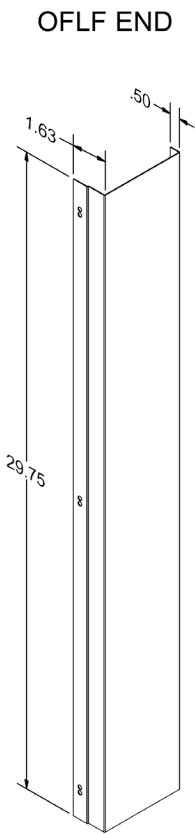
Product Description	
Urbane style overlay panel. List Door hinge (if applicable) and manufacturer panel width required. ***Overlay panels are made at 29.75"H to match our cabinet fronts. Because every appliance is different, Overlay panels may mount higher or lower on the appliance door to stay aligned with the adjacent cabinet doors. Overlay panels are manufactured without mounting holes and will need to be drilled on-site.***	
24" Depth SKU	
URB OVERLAY PANEL	

Cabinet Accessories - Front Fillers: OFLFxx, OFLF ENDxx

[*Return to Table of Contents](#)



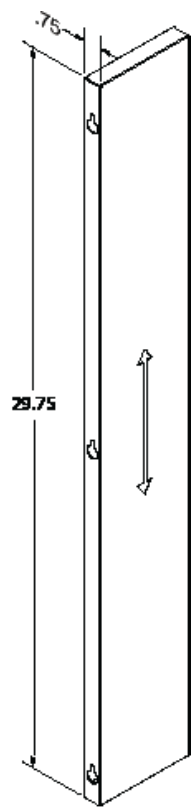
Product Description
OFLF: Front base cabinet filler, sits flush with door/drawer faces, joggle bends on both sides to attach between two base cabinets. 1"W minimum, available in 1/8" increments as needed. Example: OFLF 1.50
SKU
OFLFXX



Product Description
OFLF END: Front base cabinet end filler, sits flush with door/drawer faces, attaches between a base cabinet and a wall. 0.5"W minimum, available in 1/8" increments as needed. Joggle bend on one side to attach to cabinet, flat bend on other side for easy installation to wall. Example: OFLF END 1.50
SKU
OFLF END XX

Cabinet Accessories - Rear Filler: OFLxx

[*Return to Table of Contents](#)

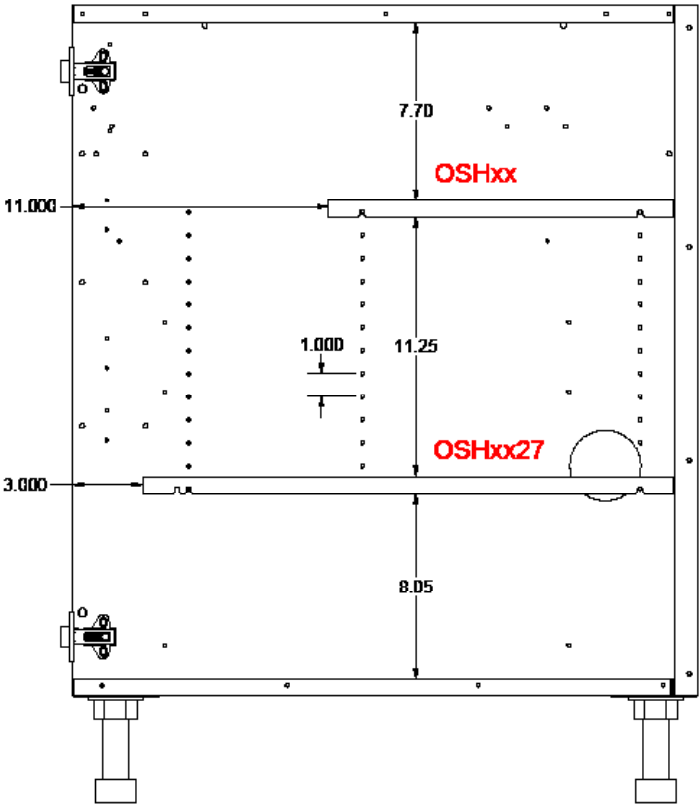


Product Description
OFL: Rear base cabinet filler with two flat bends. Installs flush with cabinet back or back panels if present, attaches between two base cabinets or against wall. 1"W minimum, available in 1/8" increments as needed. Example: OFL 1.50
SKU
OFL XX

Cabinet Accessories - Half and Full-Depth Shelving: OSHxx

[*Return to Table of Contents](#)

We offer a variety of different shelving options including half-depth, full-depth, pullout, and heavy duty pullout shelves for ice chests. NOTE: Appliance shelves are installed in FIXED position and cannot be adjusted.

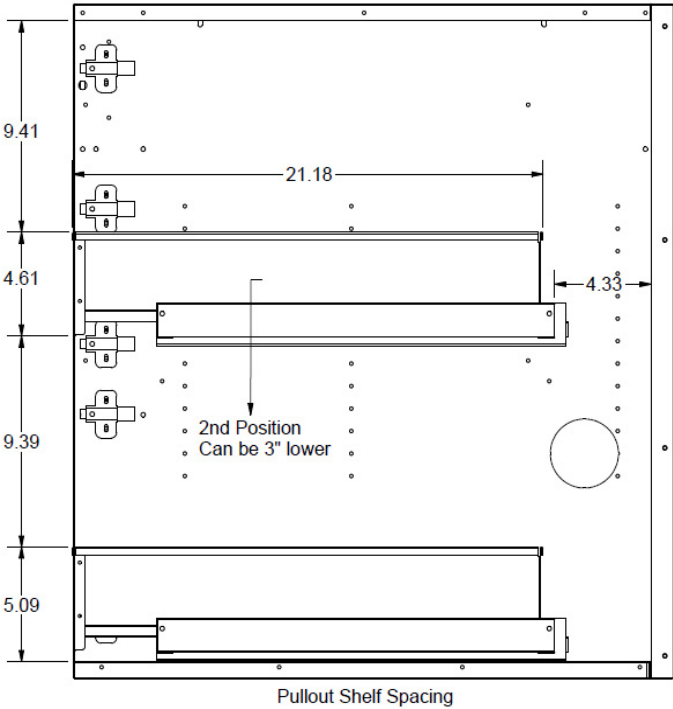


Product Description	
OSHxx: Half-Depth Shelves, 15" deep.	
27" Depth SKU	
OSH12	
OSH15	
OSH18	
OSH21	
OSH30	
OSH36	

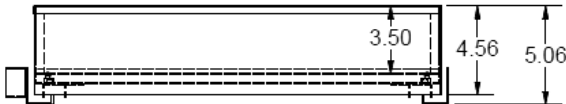
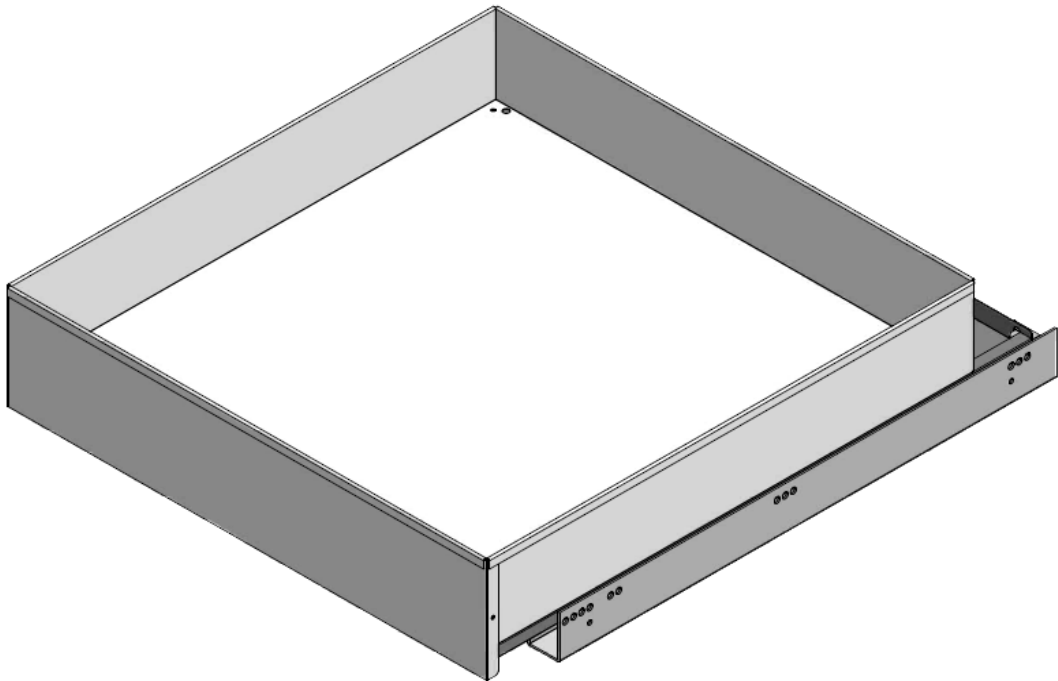
Product Description	
OSHxxyy: Full-Depth shelves (24" or 27" deep)	
27" Depth SKU	24" Depth SKU
OSH1527	OSH1524
OSH1827	OSH1824
OSH2127	OSH2124
OSH3027	OSH3024
OSH3627	OSH3624

Cabinet Accessories - Pullout Shelving: OSHxxP

[*Return to Table of Contents](#)

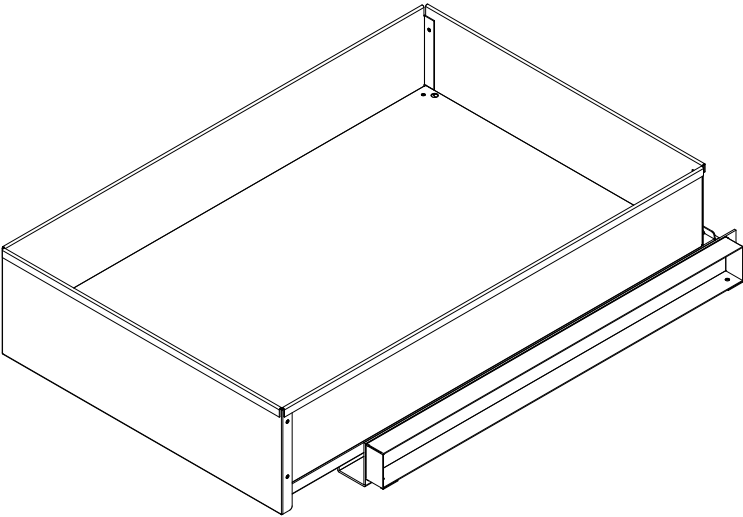


Product Description
OSHxxP: Pullout Shelf
Pullout SKU
OSH15P
OSH18P
OSH21P
OSH24P
OSH30P
OSH36P



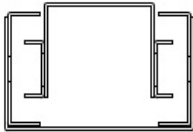
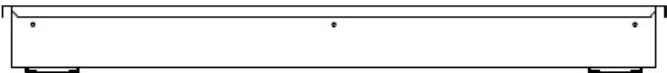
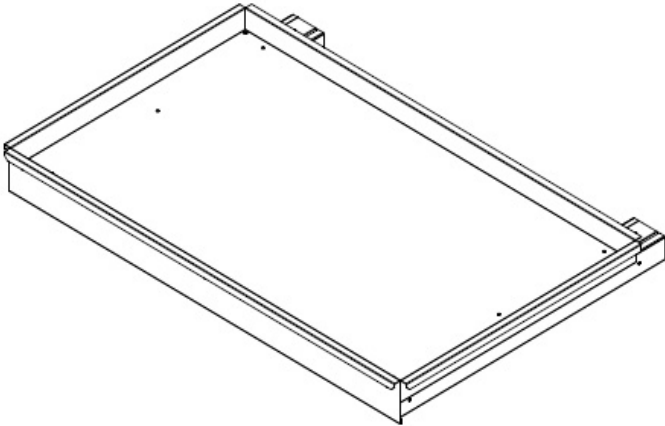
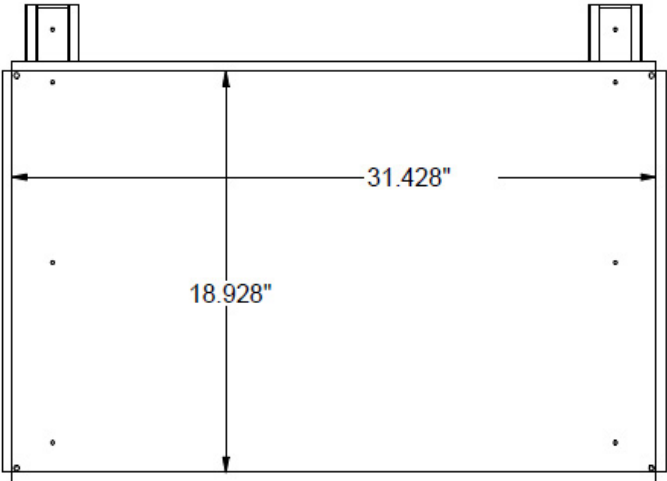
Cabinet Accessories - Pullout Ice Chest: OSHxxPCHEST

[* Return to Table of Contents](#)

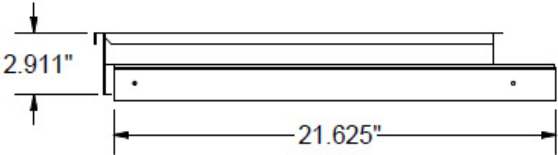


Product Description
OSHxxPCHEST: Pullout Shelf with heavy duty glides designed for ice chests, can hold up to 222 lbs.
27" and 24" Depth SKU
OSH21PCHEST
OSH24PCHEST
OSH30PCHEST
OSH36PCHEST
OSH42PCHEST

Ex. OSH36PCHEST, installs in 36"W cabinet



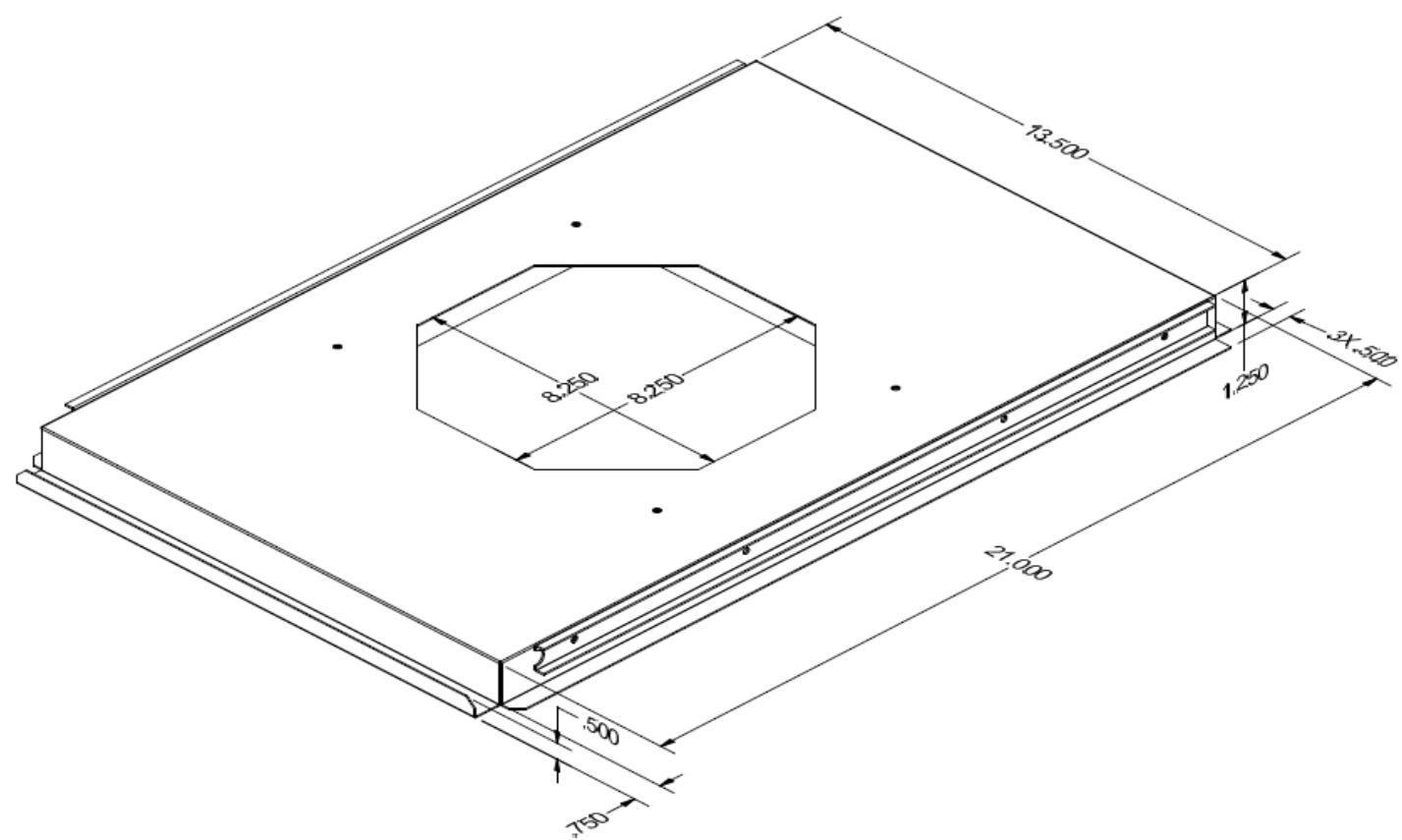
Side Mount Slides



Cabinet Accessories - Propane Pullout: OPPxx

[*Return to Table of Contents](#)

Product Description	
OPPxx: Propane pullout accessory Designed to fit 18 - 30" wide OBB Side Burner cabinets and 33"-62"W OGB Grill Cabinets. **CANNOT BE USED FOR LOW AND DEEP CABINETS!**	
SKU	Description
OPP18	Propane Pullout for 18" OBB or 36"/54" Grill Base
OPP21	Propane Pullout for 21" OBB or 1 side of 42" Grill Base
OPP24	Propane Pullout for 24" OBB or 1 side of 48" Grill Base
OPP30	Propane Pullout for 30" OBB Side Burner base

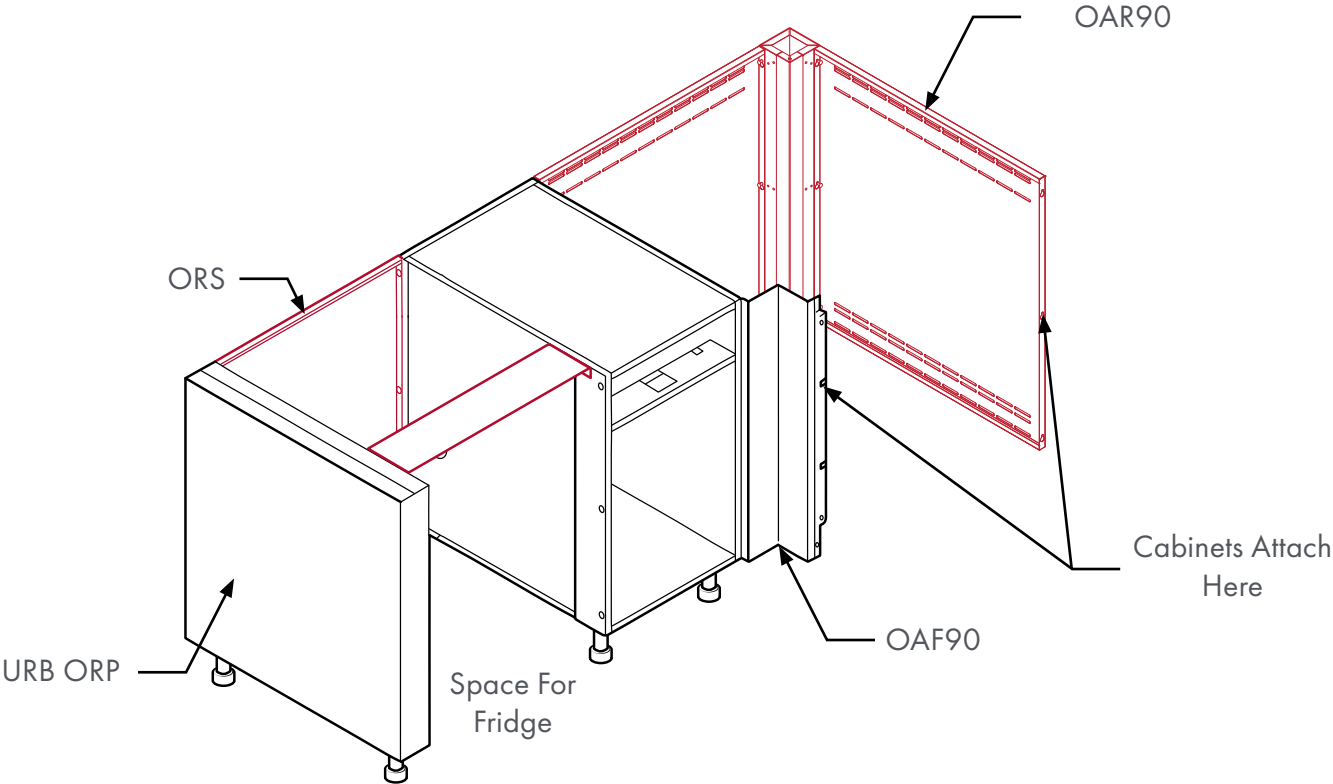


Cabinet Accessories - Undercounter Appliance Parts

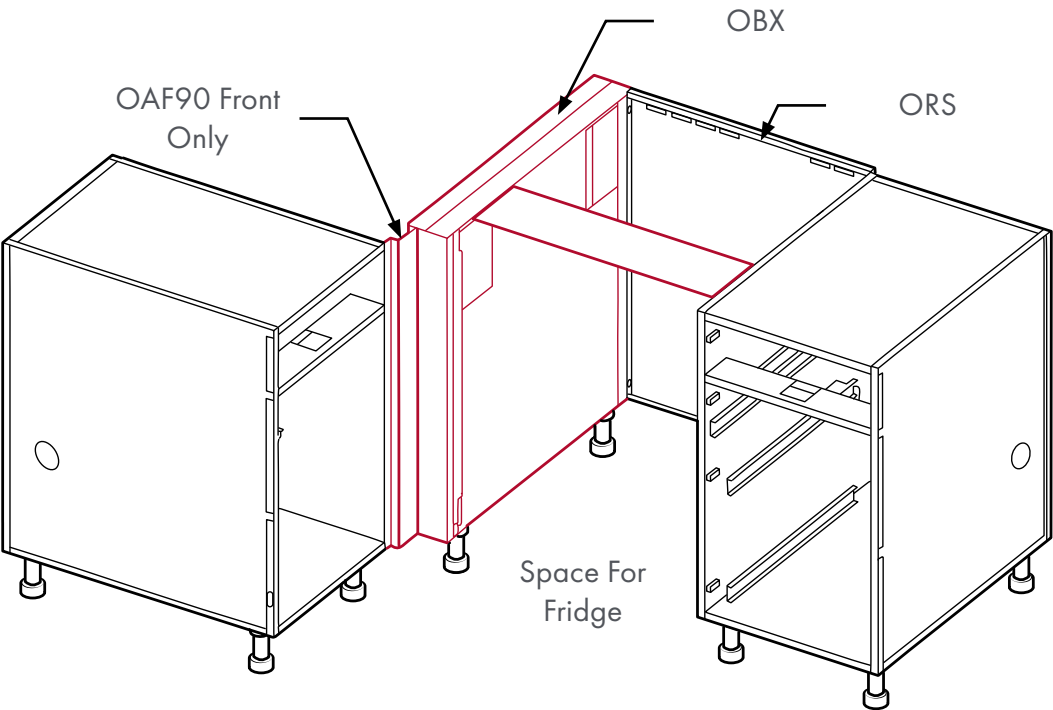
We offer a variety of different options for designing corners, void spaces, and undercounter appliance areas.

[*Return to Table of Contents](#)

See example below for how to fill a corner void to place refrigerator at end of run.

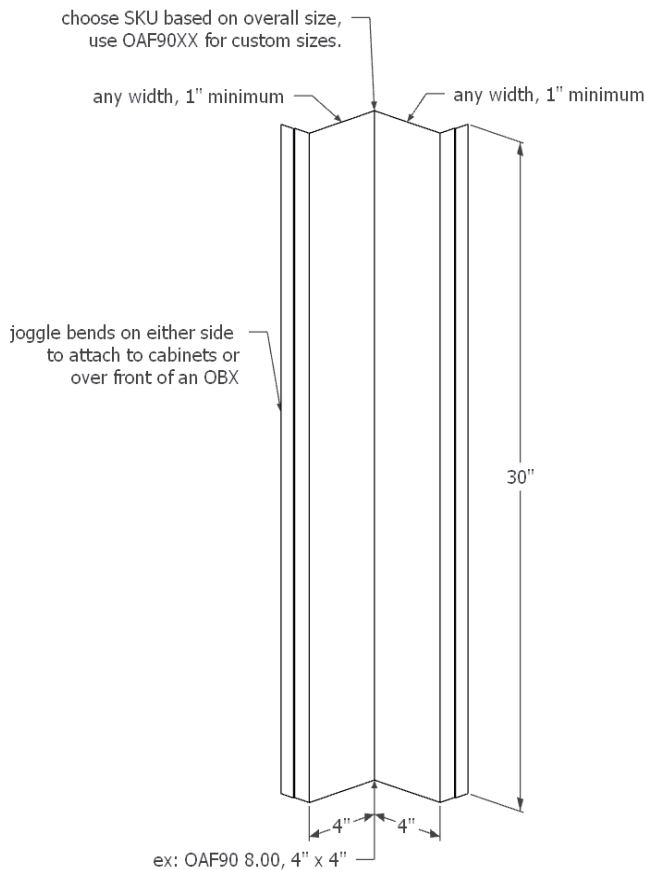


Example of how to place refrigerator next to corner.

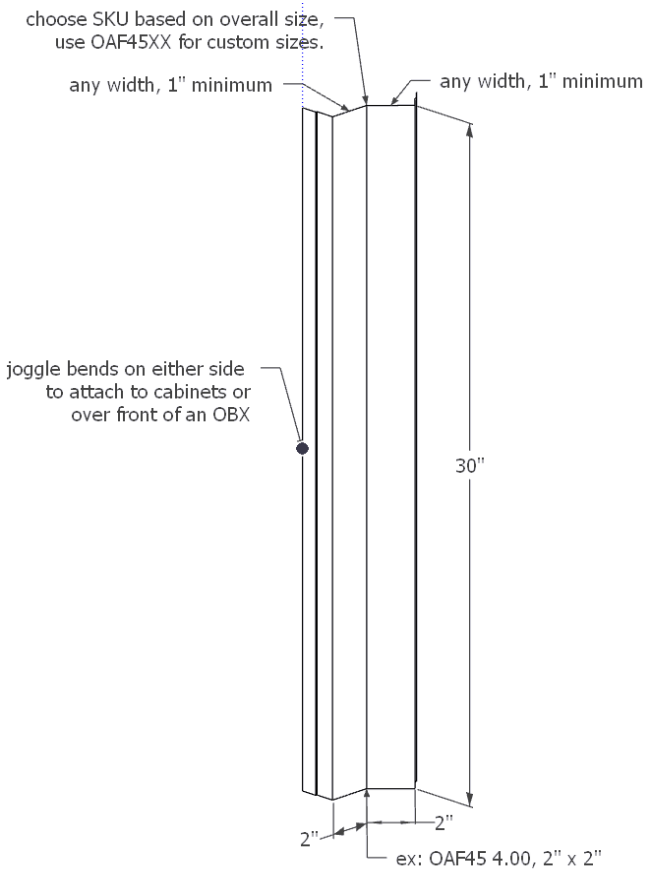


Cabinet Accessories - Front Corner Fillers: OAF90/45xx

[*Return to Table of Contents](#)



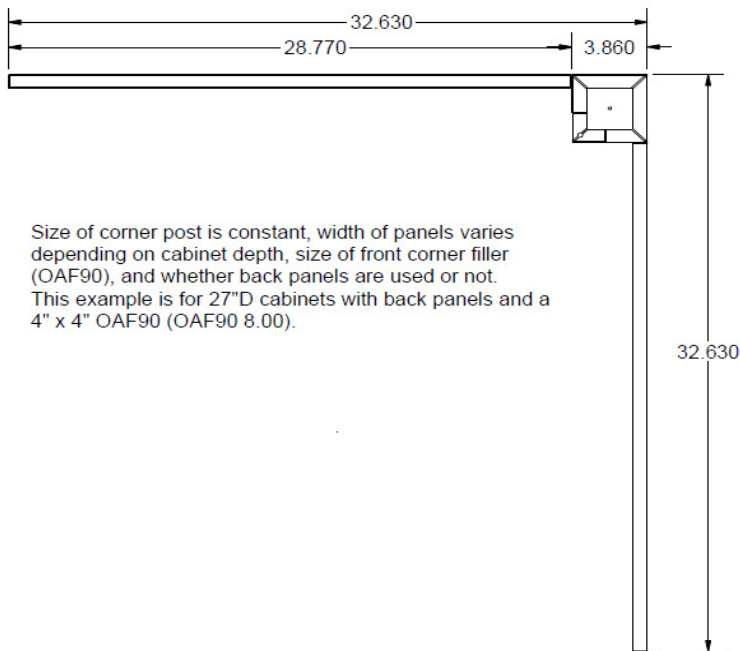
Product Description
OAF90: 90 degree front base corner filler, sits flush with door/drawer faces, attaches to two base cabinets, OBX columns, or a combination of the two depending on your design. SKUs are designated by overall filler width, specify each side of bend. 2"W overall minimum (1" minimum on either side of bend), available in 1/8" increments as needed.
Note: If an OBX is used at corner for creating an undercounter appliance space, the OAF90 will attach over the OBX (see Sample Layouts sheet at the beginning of this section).
Example: OAF90 8.00, 4" x 4"
Example: OAF90 9.50, 3.5" x 6"
SKU
OAF90XX



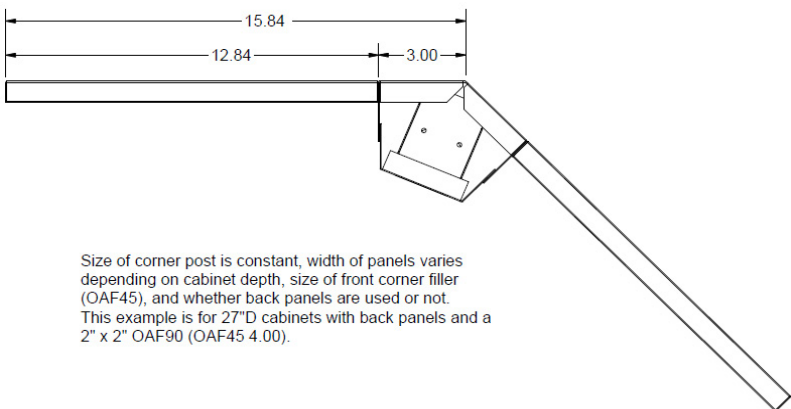
Product Description
OAF45: 45 degree front base corner filler, sits flush with door/drawer faces, attaches to two base cabinets, OBX columns, or a combination of the two depending on your design. SKUs are designated by overall filler width, specify each side of bend. 2"W overall minimum (1" minimum on either side of bend), available in 1/8" increments as needed.
Note: If an OBX is used at corner for creating an undercounter appliance space, the OAF45 will attach over the OBX (see Sample Layouts sheet at the beginning of this section).
Example: OAF45 4.00, 2" x 2"
Example: OAF45 7.25, 4.125" x 3.125"
SKU
OAF45XX

Cabinet Accessories - Corner Void Support System: OAR90xx

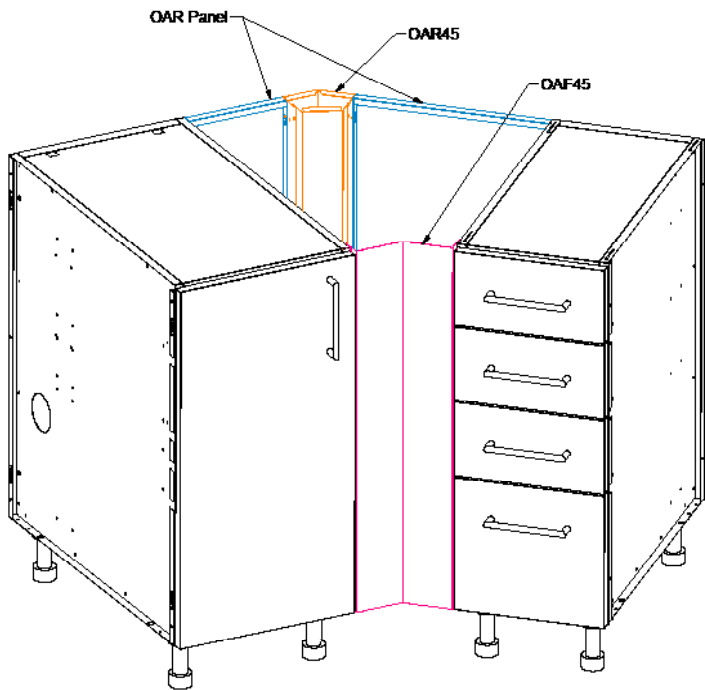
[*Return to Table of Contents](#)



Product Description	
OAR90: Rear corner support column with two back panels to attach in void where OAF90 front base corner filler is used. Post size is constant, panel sizes are based on front base corner filler size (OAF90). Single adjustable leg on column to match those on cabinetry, can be upgraded to SSLEG.	
27" Depth SKU	Description
OAR90XX NO VENT	Solid Panels
OAR90XX VENT	Vented Panels
OAR90XX EQUAL BP VENT	galvanized and vented panels, for use with Equal Back Panels and Extended Back Panels

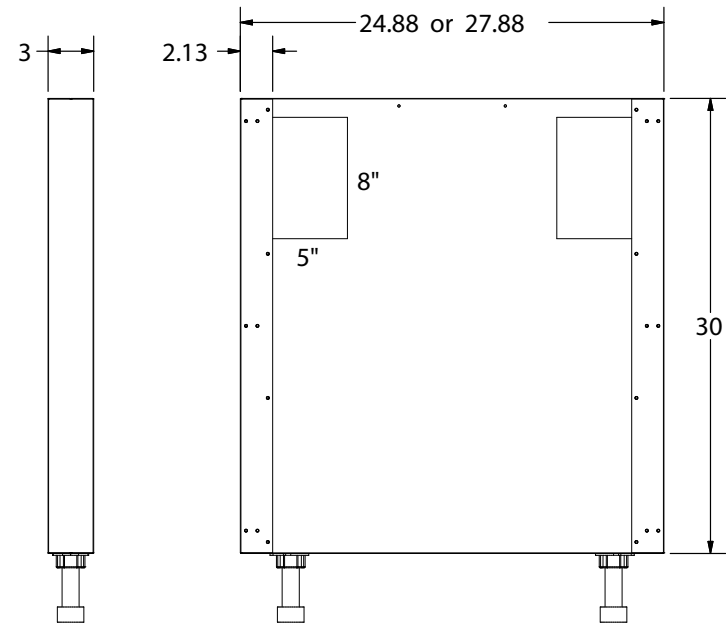


Product Description	
OAR45: Rear corner support column with two back panels to attach in void where OAF45 front base corner filler is used. Post size is constant, panel sizes are based on front base corner filler size (OAF45). Single adjustable leg on column to match those on cabinetry, can be upgraded to SSLEG.	
27" Depth SKU	Description
OAR45XX NO VENT	Solid Panels
OAR45XX VENT	Vented Panels
OAR45XX EQUAL BP VENT	Galvanized and vented panels, for use with Equal Back Panels and Extended Back Panels



Cabinet Accessories - Countertop Support Columns: OBXzz.zz x.xx

[*Return to Table of Contents](#)

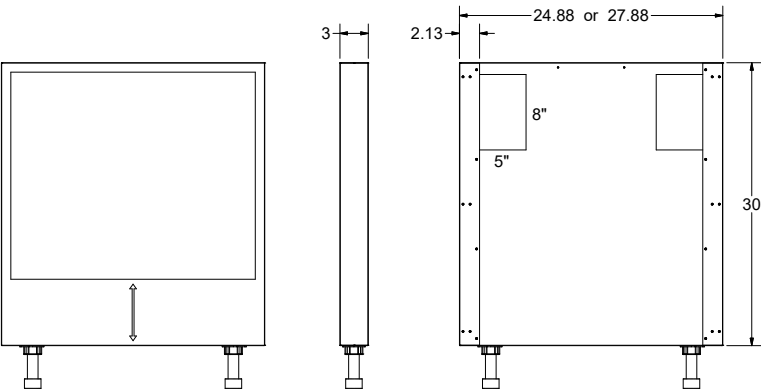


Note: OBX has rectangular cutouts on one side, finished on front and back only.

Product Description		
OBXzz.zz x.xx: Column for countertop support for the middle of a run with an undercounter appliance. Attaches to a cabinet or another column via an ORS panel. Comes in two standard widths and four standard depths to match cabinets with or without back panels. Comes with two adjustable legs to match those on cabinetry.		
SKU		
Prefix	Depth	Width
OBX	24.88	3.00
OBX	27.88	3.00

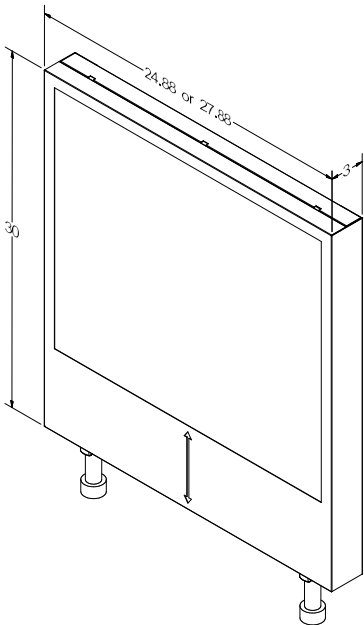
Cabinet Accessories - Countertop Support Columns: ORPzz.zz x.xx

[*Return to Table of Contents](#)



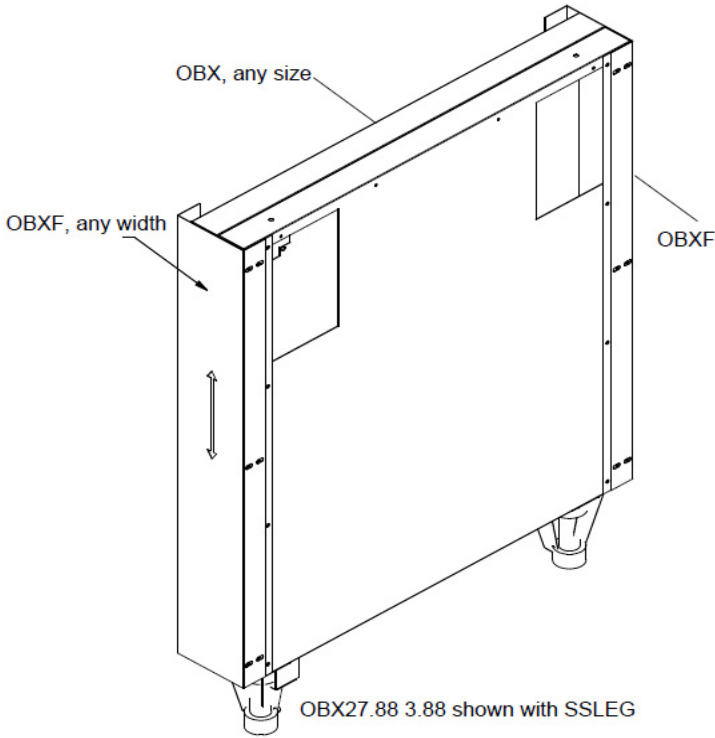
Product Description		
URB ORPzz.zz x.xx: Column for countertop support with one finished side for ending a run with an undercounter appliance. Attaches to a cabinet or another column via an ORS panel. Comes in two standard widths and four standard depths to match cabinets with or without back panels. Can be upgraded to match door styles on finished side. Comes with two adjustable legs to match those on cabinetry.		
SKU		
Prefix	Depth	Width
URB ORP	24.88	3.00
URB ORP	27.88	3.00

Note: ORP has rectangular cutouts on one side and is finished on front, back, and one side. Reversible for application on either end of a run.



Cabinet Accessories - OBX Width Skin: OBXF xx

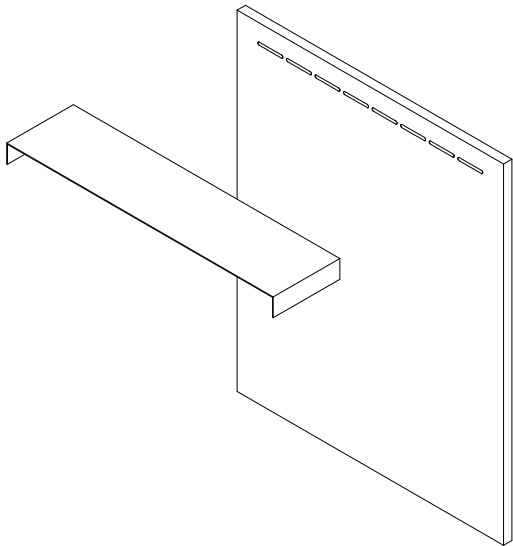
[*Return to Table of Contents](#)



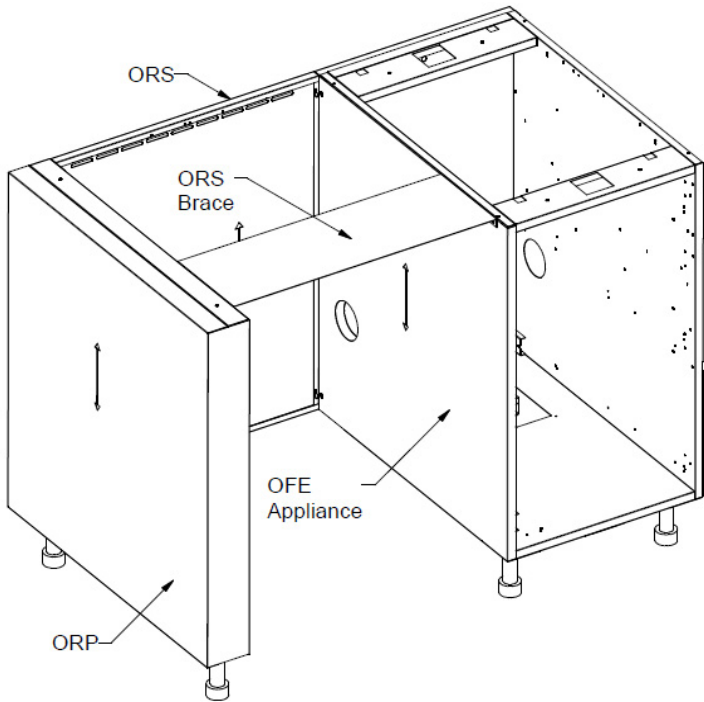
Product Description	
OBXF: Skins that connect over the front and back of an OBX to increase width. Order 2 if a filler is needed for both the front and back of the OBX. NOTE: Available in any width in 1/8" increments. Some SKUs already programmed, see table below. Use OBXF XX for custom sizes as needed.	
27" Depth SKU	Description
OBXF 3.00	3.00"W Skin
OBXF 3.50	3.50"W Skin
OBXF 3.88	3.88"W Skin
OBXF 4.75	4.75"W Skin
OBXF 5.25	5.25"W Skin
OBXF 5.38	5.38"W Skin
OBXF 5.63	5.63"W Skin
OBXF 5.88	5.88"W Skin
OBXF 6.00	6.00"W Skin
OBXF 6.25	6.25"W Skin
OBXF 7.25	7.25"W Skin
OBXF 8.00	8.00"W Skin
OBXF XX	Custom Width Skin

Cabinet Accessories - Undercounter Appliance Spacers: ORSxx

[*Return to Table of Contents](#)



EXAMPLE:
ORS24.25 used as a spacer,
creating an opening for an
appliance, attached between a
cabinet and an URB ORP column.

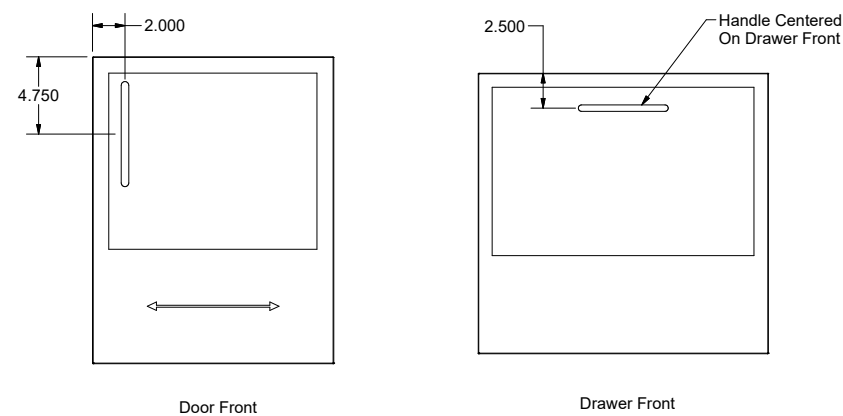


Product Description	
ORSxx: Rear vented spacer panel used to “lock-in” exact size opening for undercounter appliances. Used as a back panel for undercounter appliance space when needed.	
Available in 1/8” increments, custom widths available, contact Sales for information. Middle brace is 8” wide.	
Non-Vented versions of all sizes are available.	
Attaches between two cabinets, two ORP or OBX columns, or a cabinet and ORP or OBX.	
Vented SKU	Non-Vented SKU
ORS15	ORS15 NV
ORS15.25	ORS15.25 NV
ORS15.50	ORS15.50 NV
ORS18	ORS18 NV
ORS18.25	ORS18.25 NV
ORS20.25	ORS20.25 NV
ORS20.50	ORS20.50 NV
ORS20.75	ORS20.75 NV
ORS21	ORS21 NV
ORS21.25	ORS21.25 NV
ORS21.75	ORS21.75 NV
ORS22	ORS22 NV
ORS22.25	ORS22.25 NV
ORS23	ORS23 NV
ORS23.75	ORS23.75 NV
ORS24	ORS24 NV
ORS24.25	ORS24.25 NV
ORS24.50	ORS24.50 NV
ORS24.75	ORS24.75 NV
ORS26.25	ORS26.25 NV
ORS27.25	ORS27.25 NV
ORS28.25	ORS28.25 NV
ORS28.50	ORS28.50 NV
ORS29	ORS29 NV

ORS Brace ships with the ORS. OFE Appliance panel(s) must be ordered to install the brace. If OFE Appliance panel(s) is not ordered the brace can be discarded, but the customer must secure the ORP.

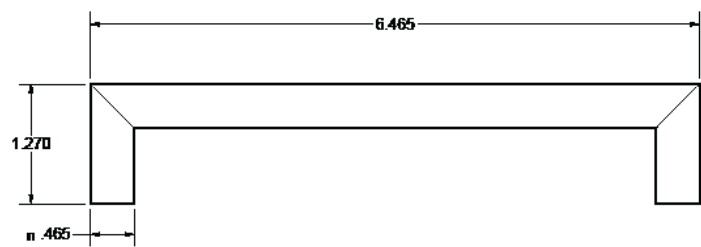
Miscellaneous - Urbane Standard Handle Placement

[*Return to Table of Contents](#)



Product Description
Urbane Handle Placement: see image to left. Drawer handle placement is centered from side to side on fronts and matches standard door placement excluding short drawer fronts under 7"H.

Standard Handle

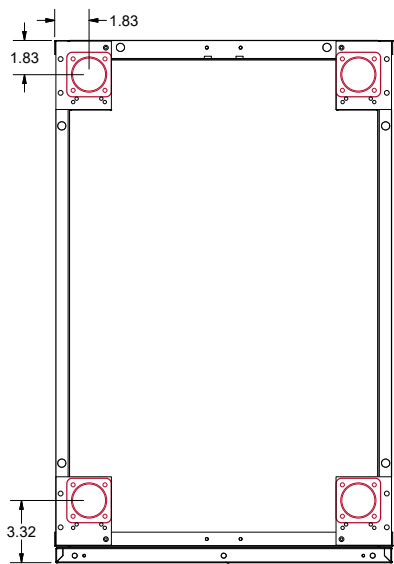


Product Description
All Denver Outdoor Kitchens Urbane cabinets come drilled and assembled with our standard stainless steel handle. Custom handle drilling and bar pulls are unavailable in the Urbane collection.

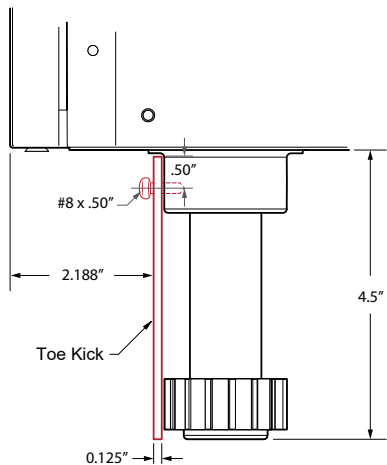
Miscellaneous - Standard Legs and Toe Kick

[*Return to Table of Contents](#)

Typical cabinet leg location.



Bottom View



Side View

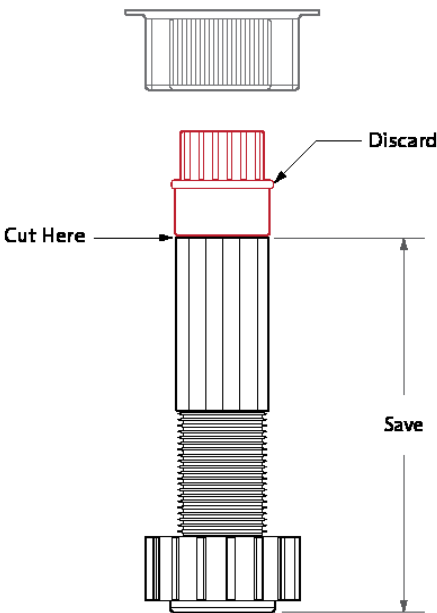
Our standard cabinetry leg is adjustable from **3.75" to 5.75"**.

Standard legs that have been cut to *ADA height* are adjustable from **2" to 3.25"**.

Modification of Standard Legs

Standard legs can be modified if the cabinet needs to sit below our standard minimum leg height (i.e. ADA application). This modification will allow the legs to be at a reduced height but still afford the ability for adjustment, ensuring correct leveling of cabinets.

Refer to the Cabinet Installation Instructions for complete information.



Product Description				
Black toe kick is available in the Urbane Collection.				
NOTE: SHIPPED SEPARATELY VIA FEDEX/UPS GROUND, NOT WITH FREIGHT SHIPMENT!				
Finish	84" Length of Toe Kick	Splice for Connecting Straight Run	45 Degree Corner Splice	90 Degree Corner Splice
2" H Black Finish	OTK2	OTK2 SPLICE	OTK2 CORNER 45	OTK2 CORNER 90
4.38" H Black Finish	OTK4	OTK4 SPLICE	OTK4 CORNER 45	OTK4 CORNER 90
6" H Black Finish	OTK6	OTK6 SPLICE	OTK6 CORNER 45	OTK6 CORNER 90



Danver Outdoor Kitchens
1 Grand Street, Wallingford, CT 06492
Danver.com