

Danver™

Trex® Outdoor Kitchens™

BROWN JORDAN®
OUTDOOR KITCHENS



Design Guide: Multifamily Projects

Revision: 1-8-2025

Table of Contents

Outdoor Cabinet Nomenclature	4
Relax 8' - Iso View	6
Relax 8' - Front View & Schedule	7
Relax 8' - Plan View	8
Meet 10' - Iso View	10
Meet 10' - Front View & Schedule	11
Meet 10' - Plan View	12
Connect 12.5' - Iso View	14
Connect 12.5' - Front View & Schedule	15
Connect 12.5' - Plan View & Schedule	16
Gather 12' - Iso View	18
Gather 12' - Front View & Schedule	19
Gather 12' - Plan View & Schedule	20
Convene 12' - Iso View	22
Convene 12' - Front View & Schedule	23
Convene 12' - Plan View & Dimensions	24

Converge 18.5' (L-shape) - Iso View	26
Converge 18.5' - Iso Hidden Line & Schedule	27
Converge 18.5' - Plan View & Schedule	28

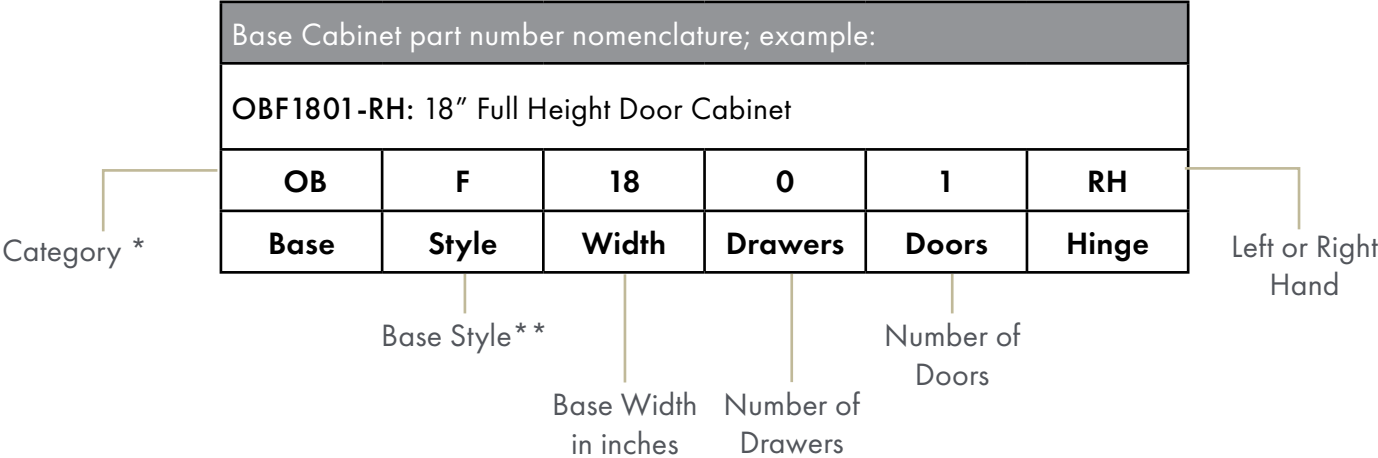
Outdoor Cabinet Nomenclature

All Denver Base cabinets use specific nomenclature designed to help you find the specific type needed.

Standard base cabinet box depth is 27" (drawers/door fronts are 7/8" thick)

For 24" depth cabinets, specify -24 after item number. Example: OBF1501-24-LH.

Right hinge or left hinge on single door units is specified as -RH or -LH.

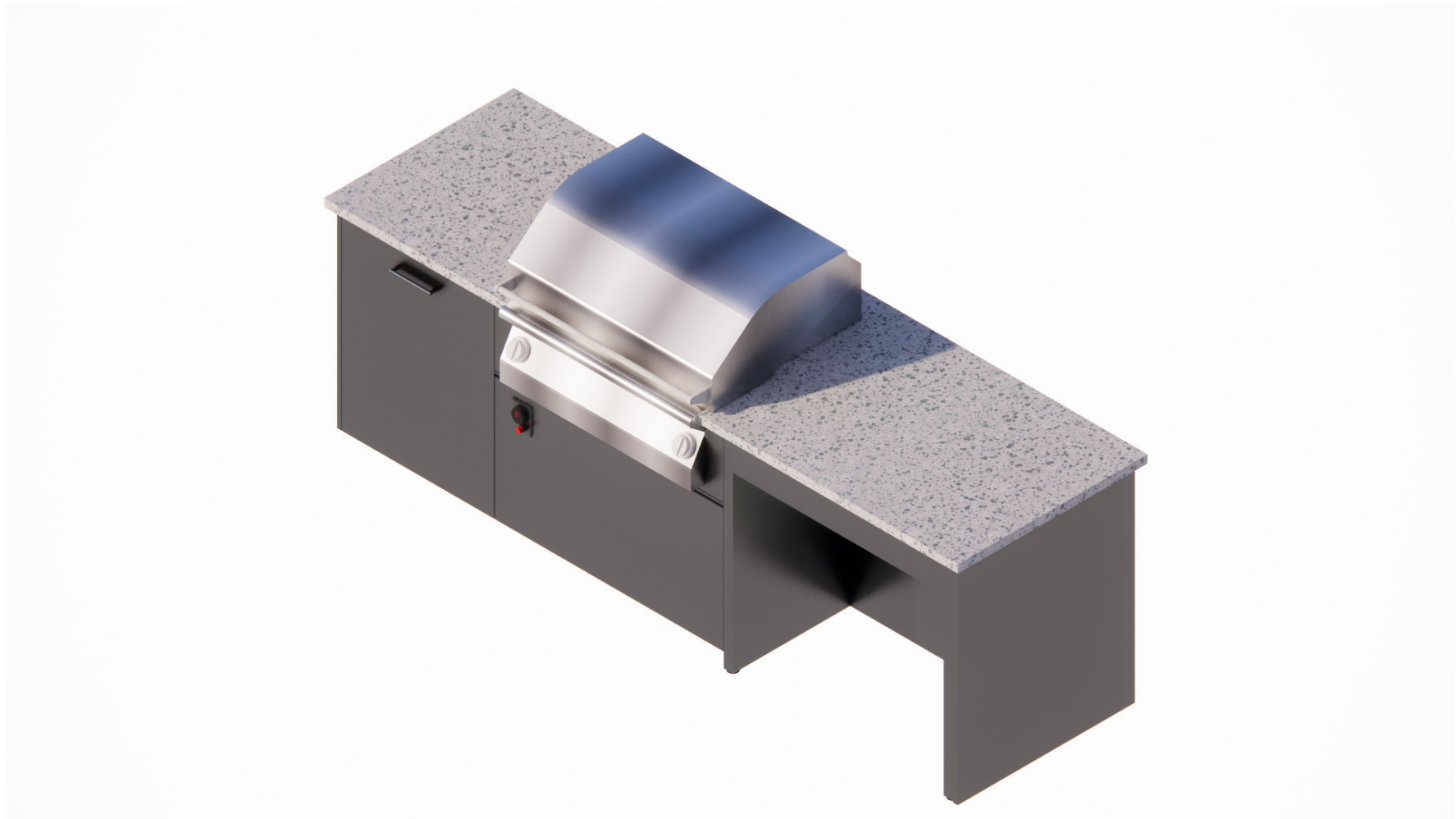


* Base Category Code Key	
OB	Outside Base
OG	Outside Grill
OE	Outside Egg
OP	Outside Propane Pull-out
OW	Outside Warming
VG	Viking Grill
DC	Diagonal Corner
AE	Angle End
OT	Outside Trash Pull-out
OS	Outside Side Panel
WS	Wall Side

** Base Style Code Key	
B	Burner
C	Cocktail Base
F	Full-height Drawer
M	Multi-Drawer
S	Sink
T	Trash
W	Warming Drawer

Basic cabinet spec
details here or
Multifamily image

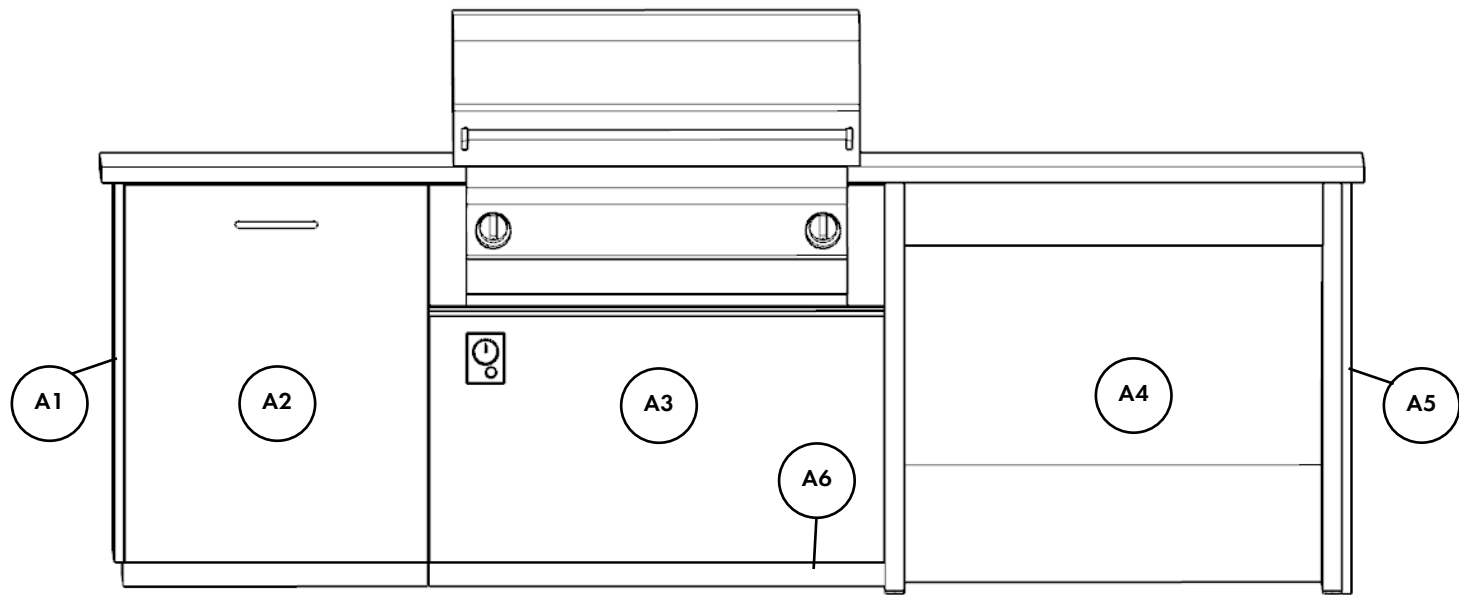
Relax 8' - Iso View



Relax 8' - Iso View

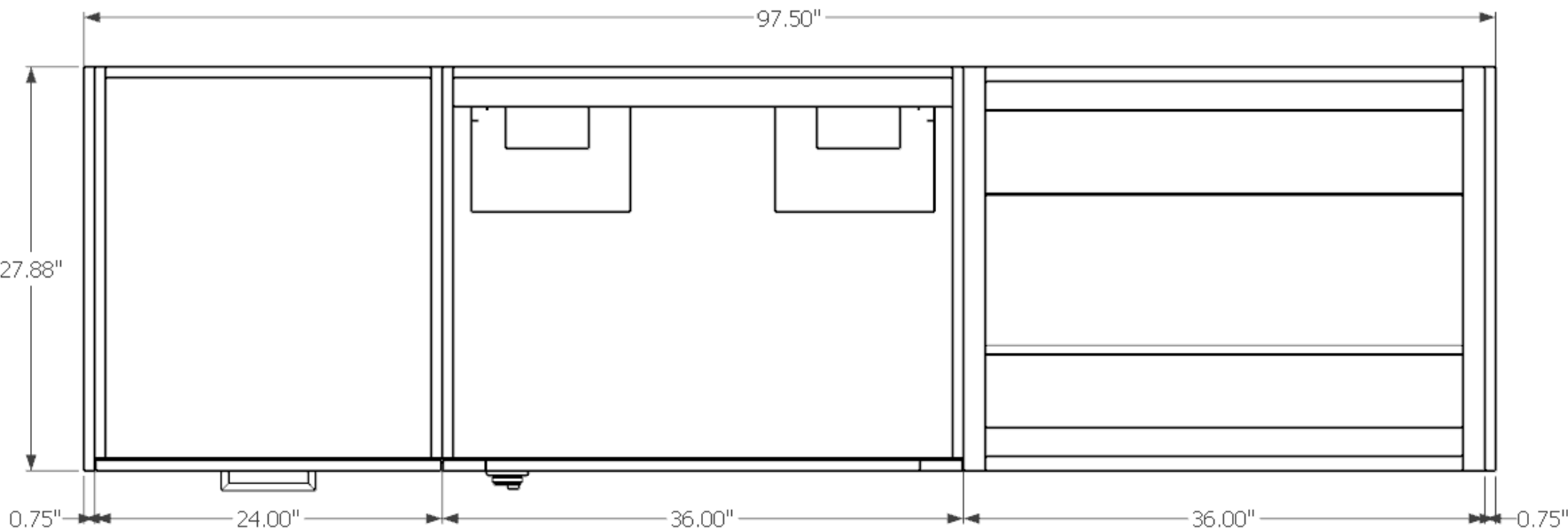
All cabinetry shown is specified to ADA standards with leg adjustments of 2-2.75" depending on thickness of countertops. 4-4.75" standard leg height is also available. Appliances, sinks, faucets, and countertop purchased separately.

Relax 8' - Front View & Schedule



CABINET & MATERIAL SCHEDULE				
KEY	PART	WIDTH	DEPTH	DESCRIPTION
A1	OSP 27.88L	.75"	28.63"	Left side panel
A2	OBT2400	24"	27"	Full-height door, pullout trash attached to door
A3	OGB3600GS	36"	27"	Grill base, Tecno style panel with gas shutoff timer
A4	OBS3600 ADA	36"	27"	Sink base/workstation, ADA compliant
A5	OSP ADA 27.88R	42"	27"	ADA Left side panel
A6	OTK2			Black toe kick 2"H

Relax 8' - Plan View





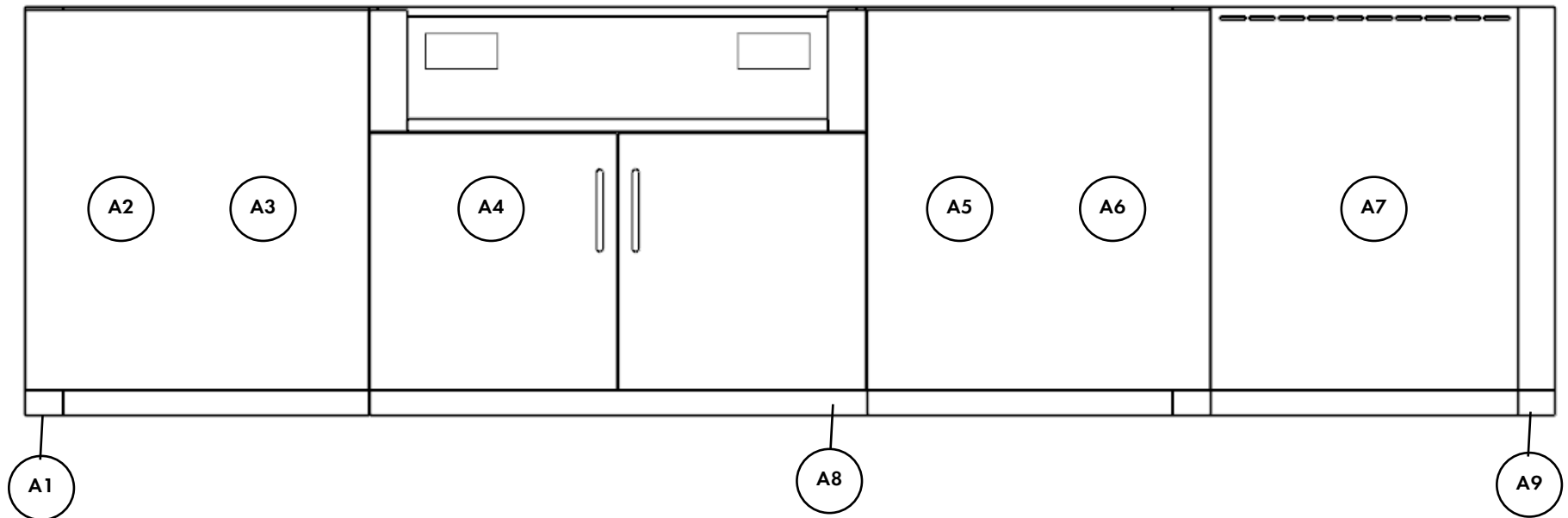
Meet 10' - Iso View



Meet 10' - Iso View

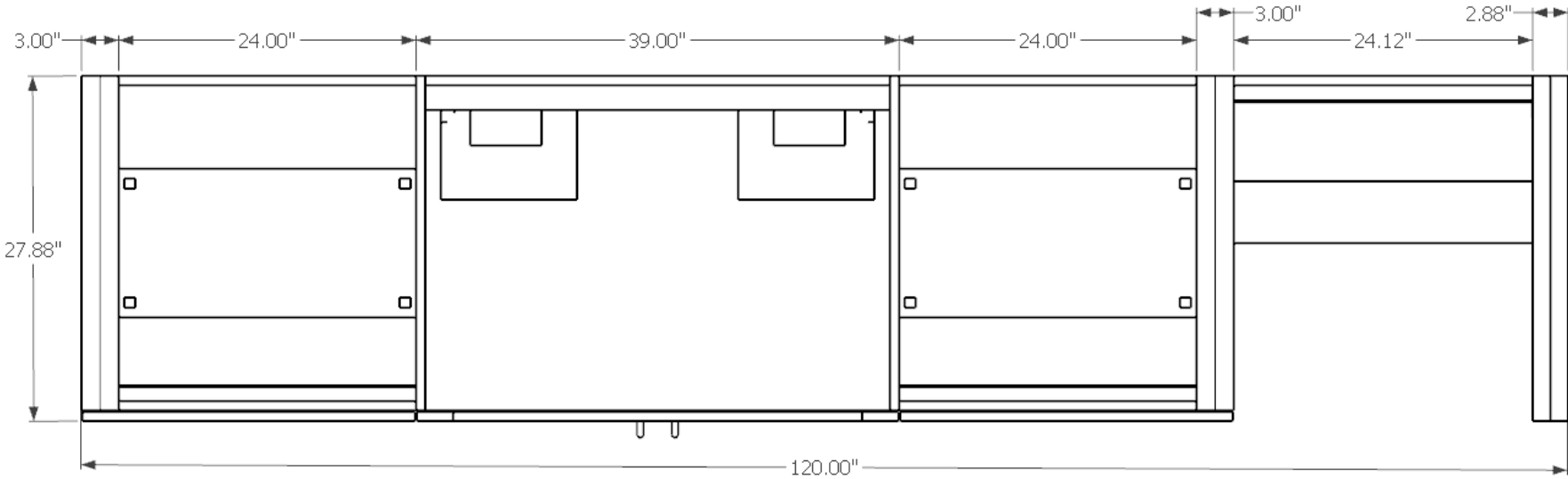
All cabinetry shown is specified to ADA standards with leg adjustments of 2-2.75" depending on thickness of countertops. 4-4.75" standard leg height is also available. Appliances, sinks, faucets, and countertop purchased separately.

Meet 10' - Front View & Schedule



CABINET & MATERIAL SCHEDULE				
KEY	PART	WIDTH	DEPTH	DESCRIPTION
A1	PPS SUPPORT END	3"	27"	Post and Panel Support End
A2	PPS PANEL 27	27"	.75"	PPS Panel
A3	PPS SPACER 24	24"		Post and Panel Spacer (behind PPS PANEL 27)
A4	OGB3902	39"	27"	Grill base, 2 doors
A5	PPS PANEL 27	27"	.75"	
A6	PPS SPACER 24	24"		Post and Panel Spacer (behind PPS PANEL 27)
A7	ORS24.13	24.13"	.75"	Refrigerator spacer
A8	OTK2			Black toe kick 2"H
A9	PPS SUPPORT END	3"	27"	Post and Panel Support End

Meet 10' - Plan View





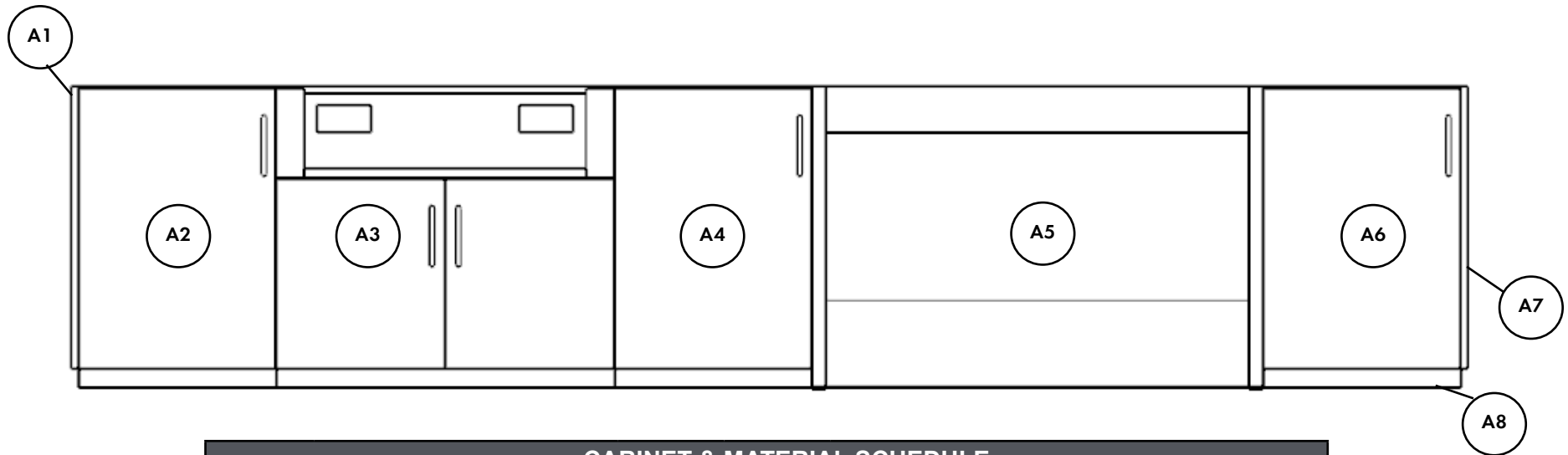
Connect 12.5' - Iso View



Connect 12.5' - Iso View

All cabinetry shown is specified to ADA standards with leg adjustments of 2-2.75" depending on thickness of countertops. 4-4.75" standard leg height is also available. Appliances, sinks, faucets, and countertop purchased separately.

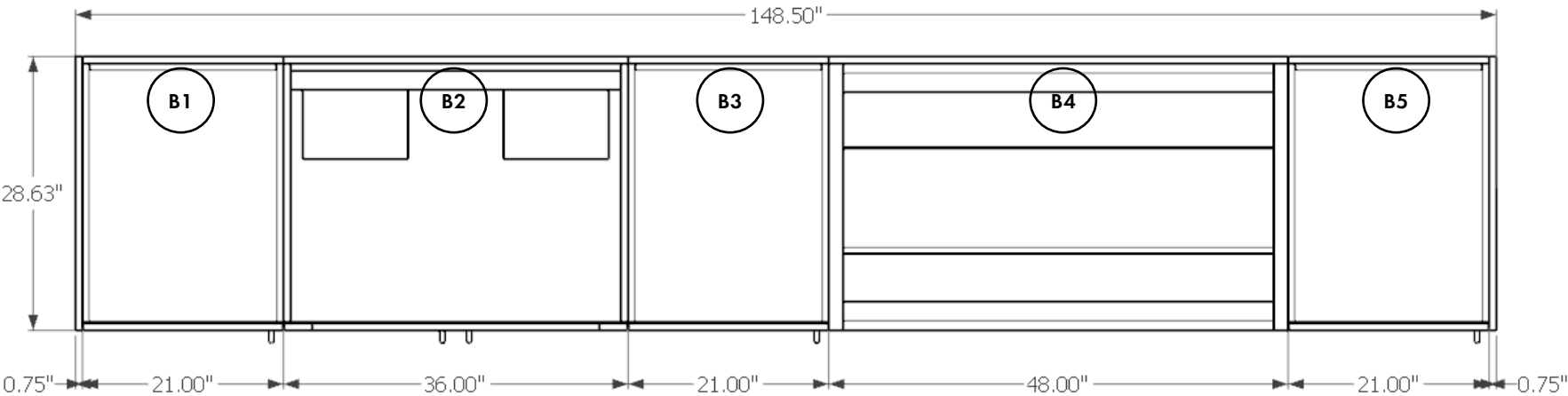
Connect 12.5' - Front View & Schedule



CABINET & MATERIAL SCHEDULE				
KEY	PART	WIDTH	DEPTH	DESCRIPTION
A1	OSP 27.88L	.75"	27.88"	Left Side Panel
A2	OBf2101-LH	21"	27"	Full-height door base, 1 door left-hinged
A3	OGB3602	36"	27"	Grill base, 2 doors
A4	OBf2101-LH	21"	27"	Full-height door base, 1 door left-hinged
A5	OBS4800 ADA	48"	27"	Sink base/workstation, ADA compliant
A6	OBf2101-RH	21"	27"	Full-height door base, 1 door right-hinged
A7	OSP 27.88R	.75"	27.88"	Right Side Panel
A8	OTK2			Black toe kick 2"H

Additional options: finished back panels, door upgrades, electrical cutouts, etc.

Connect 12.5' - Plan View & Schedule



CABINET & MATERIAL SCHEDULE			
KEY	PART	WIDTH	DESCRIPTION
B1	OBP21	21"	Back panel non-vented
B2	OBPV36	36"	Back panel with vents
B3	OBP24	24"	Back panel
B4	OBP48 ADA	48"	ADA Back panel non-vented
B5	OBP21	21"	Back panel non-vented
B6	OBP15	15"	Back panel



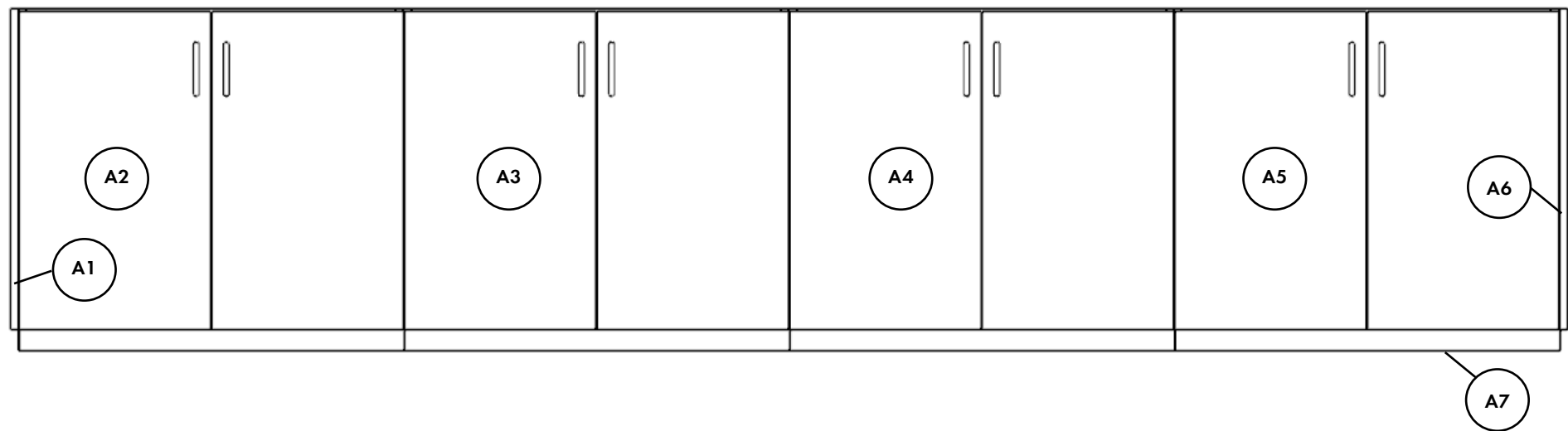
Gather 12' - Iso View



Gather 12' - Iso View

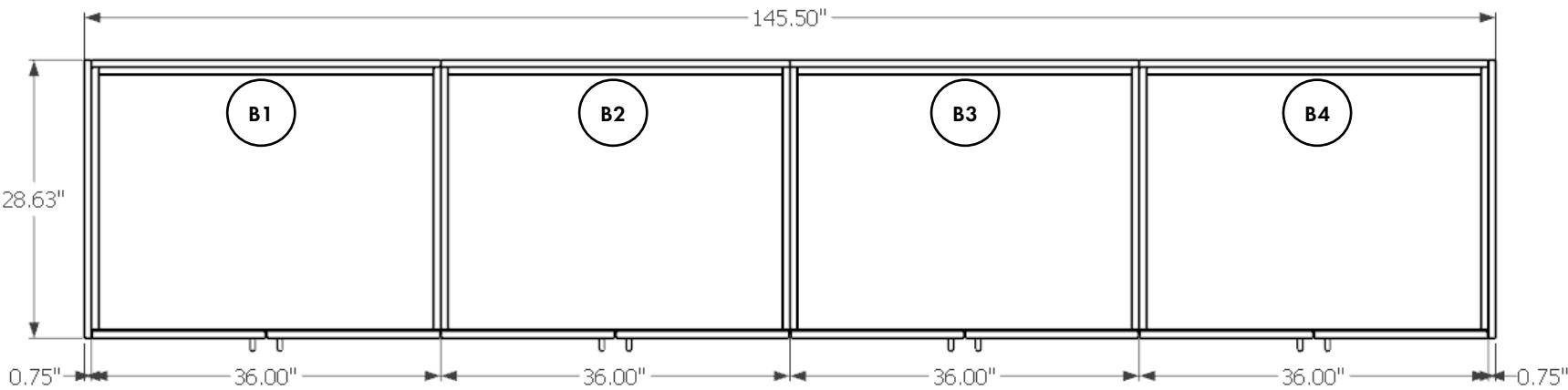
All cabinetry shown is specified to ADA standards with leg adjustments of 2-2.75" depending on thickness of countertops. 4-4.75" standard leg height is also available. Appliances, sinks, faucets, and countertop purchased separately.

Gather 12' - Front View & Schedule



CABINET & MATERIAL SCHEDULE				
KEY	PART	WIDTH	DEPTH	DESCRIPTION
A1	OSP 28.63L		28.63"	Left side panel
A2	OBF2402	24"	27"	Full-height door base, 2 doors
A3	OBS2402-FHD	24"	27"	Sink Base, 2 full-height doors
A4	OBF2402	24"	27"	Full-height door base, 2 doors
A5	OBF2402	24"	27"	Full-height door base, 2 doors
A6	OSP 28.63R		28.63"	Right side panel
A7	OTK2			Black toe kick 2"H

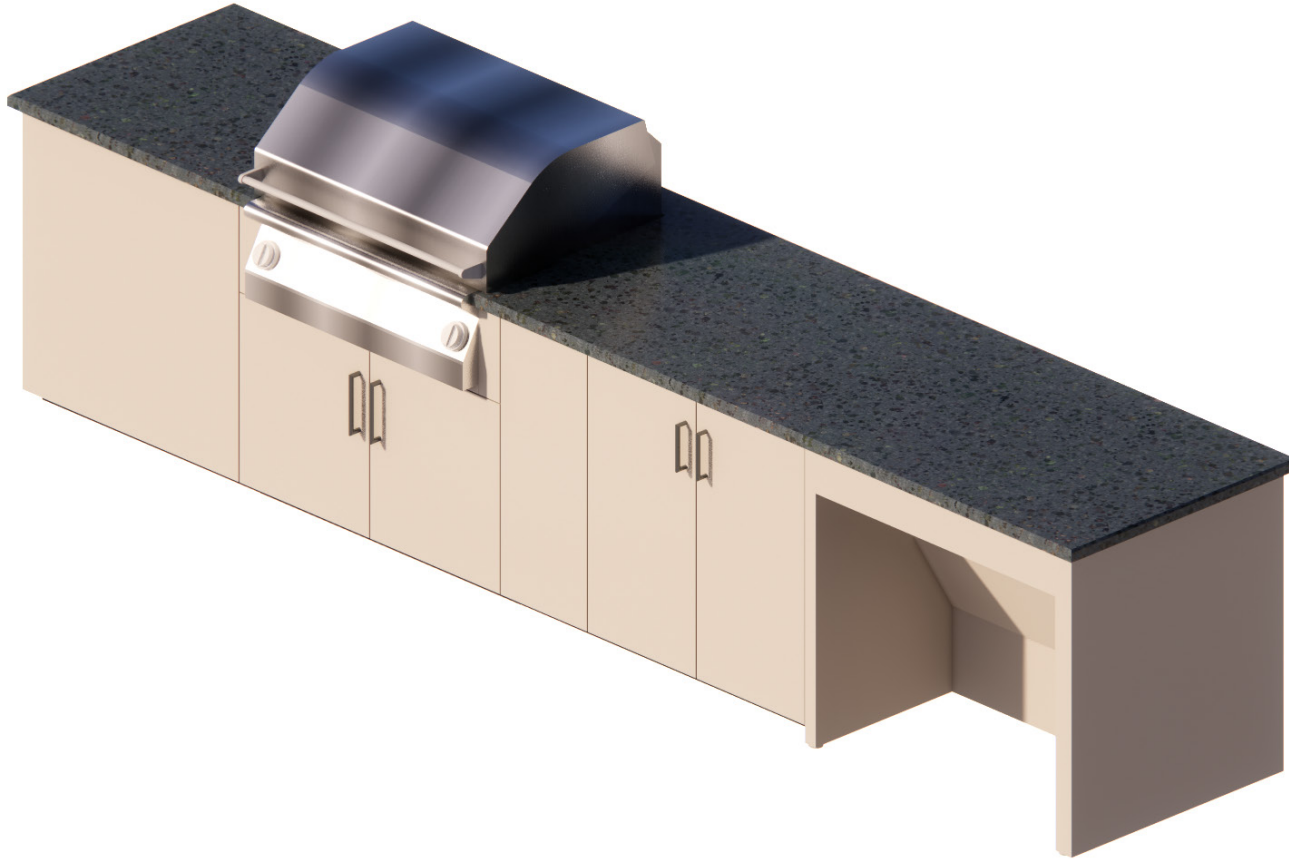
Gather 12' - Plan View & Schedule



CABINET & MATERIAL SCHEDULE			
KEY	PART	WIDTH	DESCRIPTION
B1	OBP36	36"	Back panel non-vented
B2	OBP36	36"	Back panel non-vented
B3	OBP36	36"	Back panel non-vented
B4	OBP36	36"	Back panel non-vented



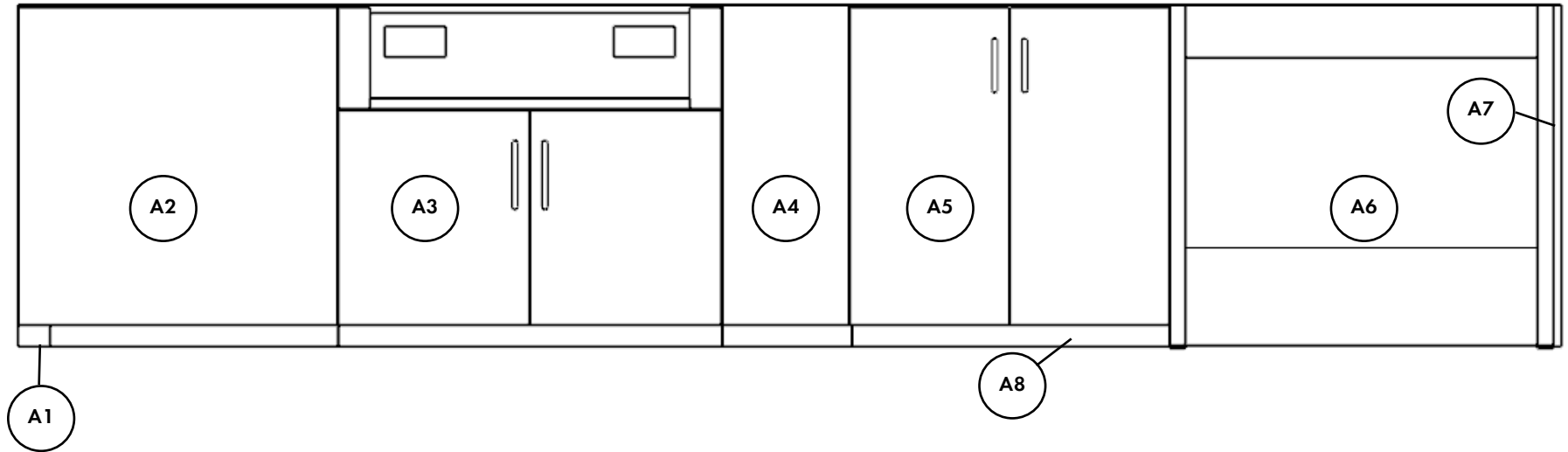
Convene 12' - Iso View



Convene 12' - Iso View

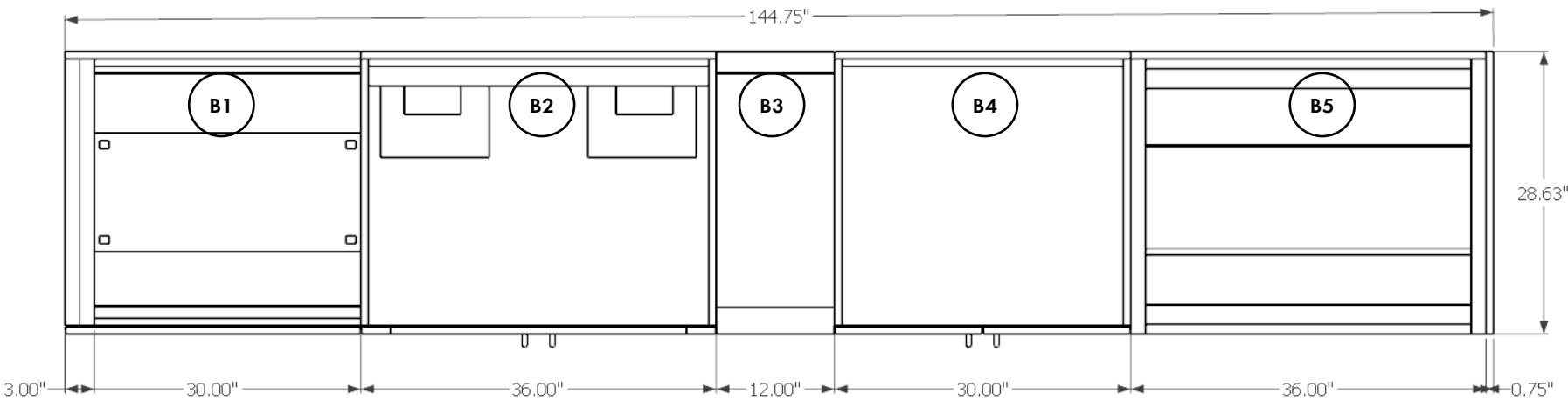
All cabinetry shown is specified to ADA standards with leg adjustments of 2-2.75" depending on thickness of countertops. 4-4.75" standard leg height is also available. Appliances, sinks, faucets, and countertop purchased separately.

Convene 12' - Front View & Schedule



CABINET & MATERIAL SCHEDULE				
KEY	PART	WIDTH	DEPTH	DESCRIPTION
A1	PPS SUPPORT END	3"	28.63"	Post and Panel Support End
A2	PPS PANEL 30	30"	27"	Post and Panel
A3	OGB3602	36"	27"	Grill base, 2 doors
A4	OFLF 12.00	12"		Front filler
A5	OBF3002	30"	27"	Full-height door base, 2 doors
A6	OBS3600 ADA	36"	27"	Sink base/workstation, ADA compliant
A7	OSP ADA 28.63R	.75"	28.63"	ADA Right Side Panel
A8	OTK2			Black toe kick 2"H

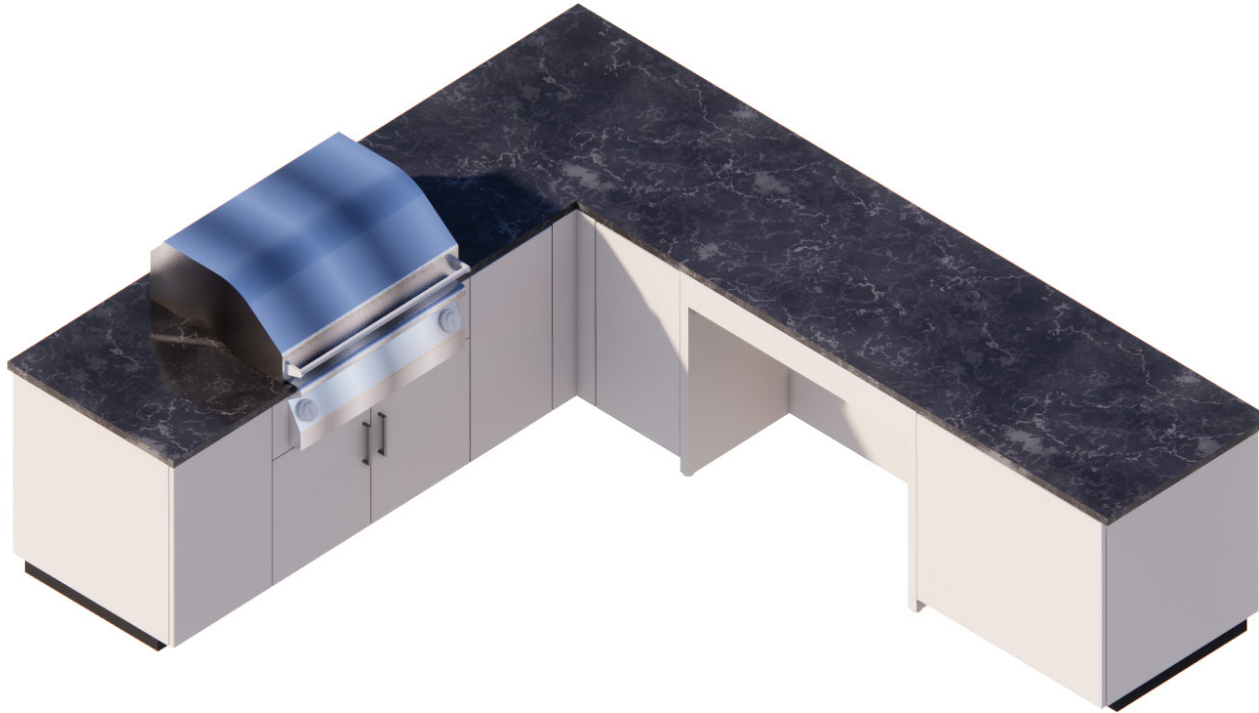
Convене 12' - Plan View & Dimensions



CABINET & MATERIAL SCHEDULE			
KEY	PART	WIDTH	DESCRIPTION
B1	OBP30	30"	Back panel non-vented
B2	OBPV36	36"	Back panel with vents
B3	OFL 12	12"	Rear filler
B4	OBP30	30"	Back panel non-vented
B5	OBP36 ADA	36"	ADA Back Panel



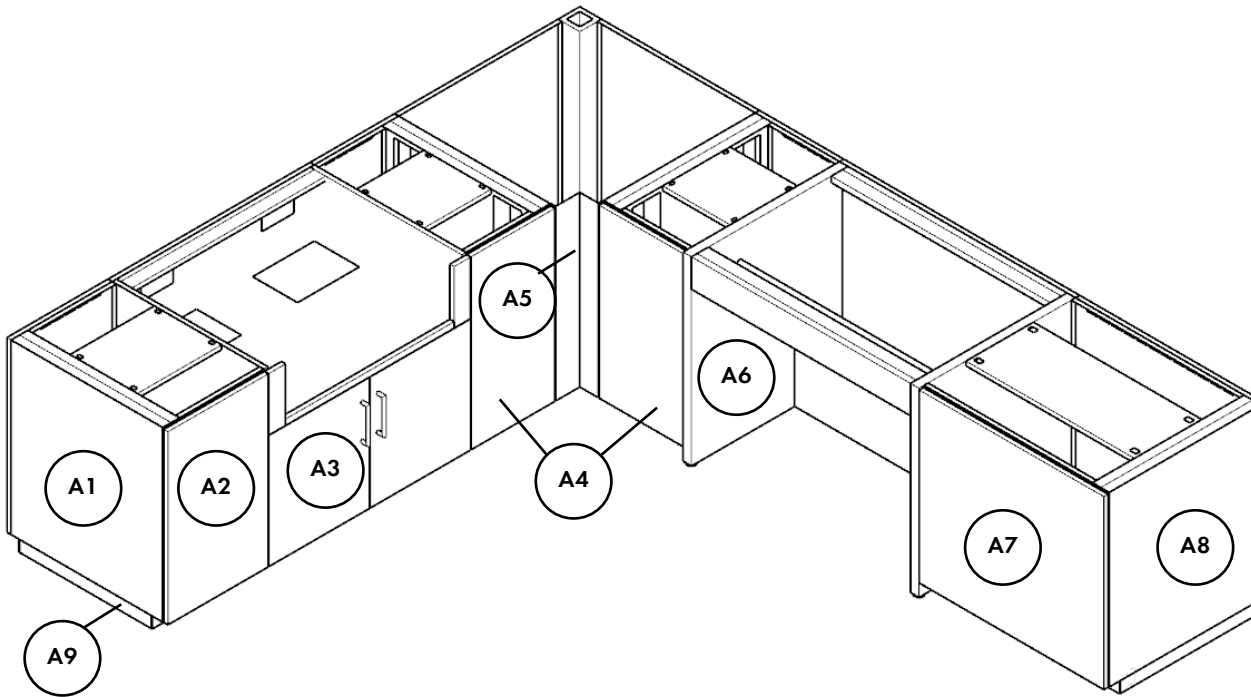
Converge 18.5' (L-shape) - Iso View



Converge 18.5' (L-shape) - Iso View

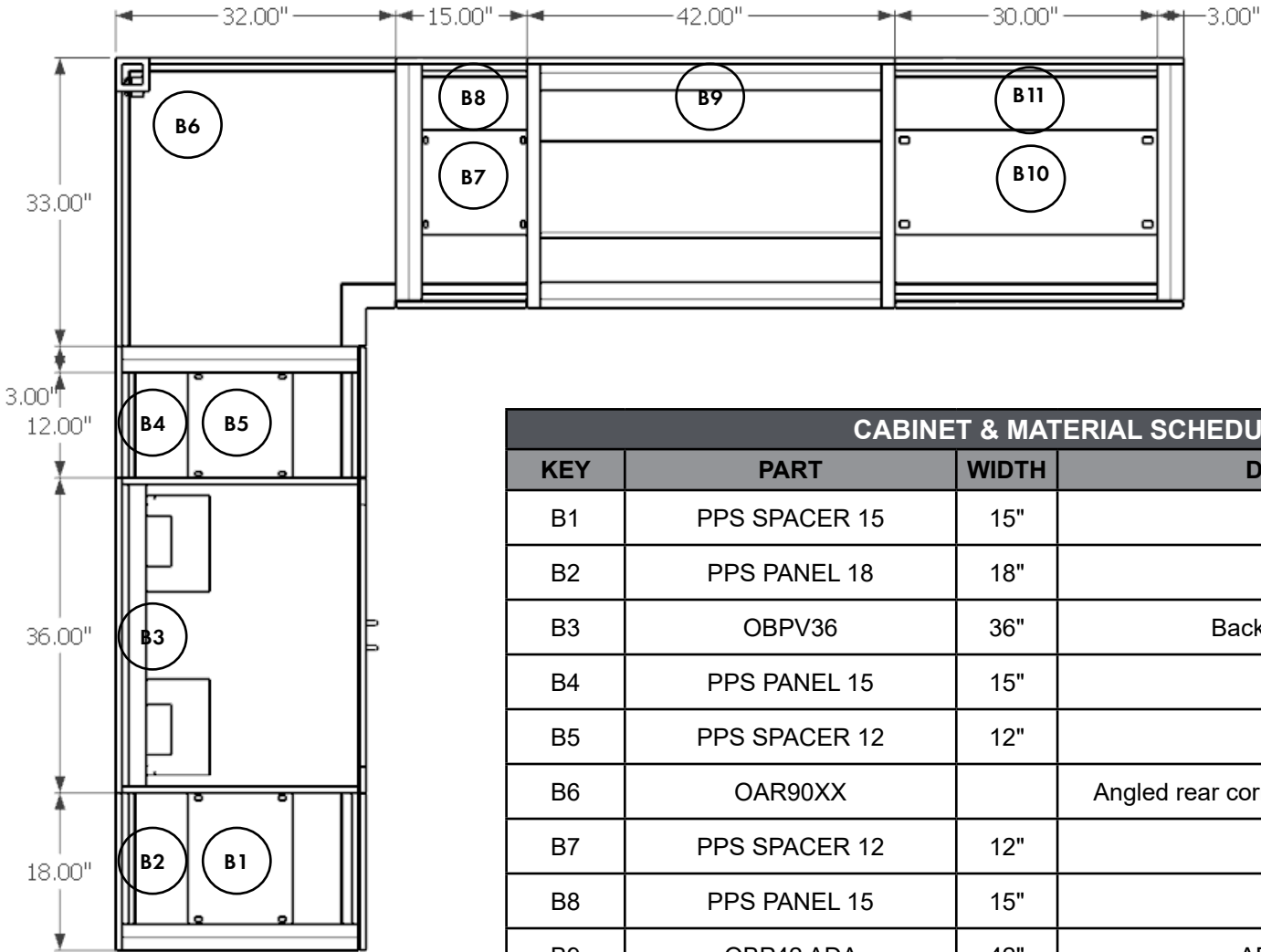
All cabinetry shown is specified to ADA standards with leg adjustments of 2-2.75" depending on thickness of countertops. 4-4.75" standard leg height is also available. Appliances, sinks, faucets, and countertop purchased separately.

Converge 18.5' - Iso Hidden Line & Schedule



CABINET & MATERIAL SCHEDULE				
KEY	PART	WIDTH	DEPTH	DESCRIPTION
A1	PPS SUPPORT END	3"	28.63"	PPS Support End
A2	PPS PANEL 18	18"		PPS Panel
A3	OGB3602	36"	27"	Grill base, 2 doors
A4	PPS PANEL 15 (2x)	15"		PPS Panel
A5	OAF90 8.00	4 1/4"		Angled Front Filler
A6	OBS4200 ADA	42"	27"	Sink base/workstation, ADA compliant
A7	PPS PANEL 33	33"		PPS Panel
A8	PPS SUPPORT END	3"		PPS Support End
A9	OTK2			Black toe kick 2"H

Converge 18.5' - Plan View & Schedule



CABINET & MATERIAL SCHEDULE			
KEY	PART	WIDTH	DESCRIPTION
B1	PPS SPACER 15	15"	PPS Spacer
B2	PPS PANEL 18	18"	PPS Panel
B3	OBPV36	36"	Back panel with vents
B4	PPS PANEL 15	15"	PPS Panel
B5	PPS SPACER 12	12"	PPS Spacer
B6	OAR90XX		Angled rear corner support post with panels
B7	PPS SPACER 12	12"	PPS Spacer
B8	PPS PANEL 15	15"	PPS Panel
B9	OBP42 ADA	42"	ADA Back Panel
B10	PPS SPACER 30	30"	PPS Spacer
B11	PPS PANEL 33	33	PPS Panel



1 Grand Street, Wallingford, CT 06492
Danver.com • BrownJordanOutdoorKitchens.com • Trex-OutdoorKitchens.com